



**Joint Parks and Recreation Department**  
W240 N3065 Pewaukee Road  
Pewaukee WI 53072  
Phone: 262-691-7275

**JOINT PARK AND RECREATION BOARD  
MEETING NOTICE AND AGENDA  
Wednesday, January 14, 2026  
6:00 PM**

Pewaukee City Hall Common Council Chambers  
W240N3065 Pewaukee Road, Pewaukee, WI

---

1. Call to Order and Pledge of Allegiance
2. Public Comment - Please limit your comments to two minutes. If further time for discussion is needed, please contact your District Alderperson prior to the meeting.
3. Agenda
  - 3.1 Approval of meeting minutes from November 12, 2025 meeting.
  - 3.2 Discussion and possible action regarding Brewfinity Brewing proposal for mobile beer gardens at Pewaukee Parks for the proposed 2026 schedule.
  - 3.3 Discussion, direction and possible action regarding Pewaukee Youth Baseball's proposal of an indoor turf facility at Pewaukee Sports Complex.
  - 3.4 Discussion and possible action regarding 2026-2030 Park and Open Space Plan.
  - 3.5 Update regarding Bell Tower Memorial use of Kiwanis Village Park.
  - 3.6 Update and discussion regarding Parks and Recreation Department continuing to offer Waterfront Wednesday concert series in 2026, previously provided by Positively Pewaukee.
  - 3.7 Discussion and possible action regarding Laimon Park financials for November and December 2025.
  - 3.8 Discussion and possible action regarding tenant lease for Laimon Family Lakeside Park.
4. Adjournment

Respectfully Submitted  
Nick Phalin, CPRP  
January 9, 2026

**NOTICE**

It is possible that members of other governmental bodies of the municipality may be in attendance to gather information that may form a quorum. At the above stated meeting, no action will be taken by any governmental body other than the governmental body specifically referred to above in this notice.

Any person who has a qualifying disability under the Americans with Disabilities Act that requires the meeting or materials at the meeting to be in an accessible format must contact the Parks and Recreation Director at (262) 691-7275 by 2 p.m. the Monday prior to the meeting so that

arrangements may be made to accommodate your request.

City of Pewaukee - New Agenda Item

Agenda Language:  
Approval of meeting minutes from November 12, 2025 meeting.

Sub Item Agenda Language:

Background Provided By:

Background:

Fiscal Impact:

Recommended Motion:

1. Call to Order and Pledge of Allegiance
2. Public Comment - Please limit your comments to two minutes. If further time for discussion is needed, please contact your District Alderperson prior to the meeting.
3. Agenda
  - 3.1 Approval of meeting minutes from September 10, 2025 meeting.

Motion to approve meeting minutes from September 10, 2025 with adjustment to item 3.7 to include the correct voting output. Brian Dziwulski / Eric Krasovich Approve Passed: 6-For, 0-Against, 0-Abstain.
  - 3.2 Recognition of 2024-25 Parks and Recreation volunteers including Chris Krasovich, Nancy Roncke, and Jackie Schoenholtz.
  - 3.3 Update regarding 2026 proposed budget.
  - 3.4 Update regarding Laimon Park patio project.
  - 3.5 Discussion and possible action regarding Laimon Park financials for September and October 2025.

Motion to approve Laimon Park financials for September and October 2025. David Linsmeier / Kristen Kreuser Approve Passed: 6-For, 0-Against, 0-Abstain.
  - 3.6 Discussion and direction regarding Laimon Park lease status and possible renewal/extension.
  - 3.7 Discussion and possible action regarding group reservation permit for Play Pewaukee All-Inclusive Playground and Garrison's Splash Pad.

Motion to approve the draft policy for group reservations at Pewaukee Sports Complex for the All-Inclusive Playground and Garrison's Splash Pad with discussed changes. David Linsmeier / Brian Dziwulski Approve Passed: 6-For, 0-Against, 0-Abstain.
4. Adjournment

Motion to adjourn. Kristen Kreuser / Gary Majeskie Approve Passed: 6-For, 0-Against, 0-Abstain.

Respectfully Submitted

Nick Phalin, CPRP



# 2026 Pewaukee Beer Garden Proposal

---

## Objective

Brewfinitly Brewing Co, located in Oconomowoc and Pewaukee, would like to continue our partnership with the Parks and Recreation Department of Pewaukee as well as the Pewaukee Lake Water Ski Club to create a social atmosphere that can be enjoyed by the entire family and community.

## Contact Info

Primary contact information is:

Chad Ostram / Owner

M: 262-271-2701

E: [chad@brewfinitlybrewing.com](mailto:chad@brewfinitlybrewing.com)

## About Brewfinitly Brewing

Brewfinitly Brewing Company, located in Oconomowoc, has been in operation since 2016. Brewfinitly Brewing was listed as one of the 50 fastest growing breweries in 2018 by the Brewers Association in which we more than doubled our year over year output. In 2019 the Oconomowoc Chamber of Commerce awarded us the Small Business of the Year award for our work and support in the surrounding Oconomowoc community. We strive to support our community through charitable donations and events whenever possible.

We have the experience and infrastructure to ensure fast service for any event and the experience and know-how to make the event a success and enjoyable for all guests.

When we work with a community or an organization to provide a beer garden event, we recognize that the partnership is important for the success of the event.



# 2026 Pewaukee Beer Garden Proposal

---

## Last Year Review / Synopsis

Last year Brewfinitly attempted to pick a park and have a beer garden each month at that location. We had several challenges present themselves last year. The events scheduled at Netteshiem Park were mostly cancelled due to road construction. We also had this occur at Kiwanis due to the road work on Capitol by the railroad tracks for the latter part of summer.

We also had a beer garden at Wagner Park each week to try to capitalize on the Pickleball players. We added in a bags league, but overall the beer garden on Tuesdays proved not to be fruitful.

We had to cancel a few of the events due to weather, and one of the events at Springdale Park due to the last minute loss of our food truck for the event and the bumper crop of mosquitoes due to the heavy rains in August.

## 2026 Proposed Approach

For 2026 we are proposing to do a beer garden at a different park each month mostly on the 2nd Friday of the month. We also plan to continue our partnership with the Pewaukee Lake Water Ski Club and serve beer at their events through 2026.

## Proposed Dates

### **Beer Gardens**

Brewfinitly is proposing the following dates for beer gardens:

Springdale Park - Friday, June 12 - 5pm-9pm

Nettesheim Park - Friday, July 10 - 5pm-9pm

Wagner Park - Friday, August 14th - 5pm-9pm (Summer Sundown / Movie Night)

Kiwanis Village Park - Friday, Sept 11, 5pm-9pm (Fall Fest)

Kiwanis Village Park - Friday, October 2nd - Parktoberfest

### **Pewaukee Lake Water Ski Club**

Brewfinitly will continue to work with the Pewaukee Lake Water Ski Club in 2026 to provide beer



# 2026 Pewaukee Beer Garden Proposal

---

and other beverages during their ski shows. We would like to serve from the Lakefront Park Pavilion for 2026 from 5pm-9pm. The dates for this would be:

Monday, May 25th (Memorial Day)

Thursdays: 5/28, 6/4, 6/11, 6/18, 7/2, 7/9, 7/16, 7/30, 8/6, 8/13, 8/20, 8/27, 9/3

Dates Brewfinitly is unavailable due to a previous agreement with the Village of Sussex:  
June 25, July 23.

## Plan of Operation

- Brewfinitly Brewing shall provide 6 beer styles for the event. We provide a variety of styles that ensure someone can find something they enjoy. We also provide wine and seltzers for those that would prefer that type of beverage.
- Brewfinitly Brewing shall provide the plastic cups for the event.
- Brewfinitly Brewing shall procure food trucks for the given dates.
- Brewfinitly Brewing shall strive to procure live music for the given dates for the beer gardens and Parktoberfest. In the event live music cannot be procured, Brewfinitly shall provide ambient music via a speaker system which Brewfinitly Brewing shall provide.
- Brewfinitly Brewing shall provide soda and water options if the procured food trucks do not provide these options.
- Brewfinitly Brewing shall provide a selection of yard games for children and family to enjoy at the beer gardens and Parktoberfest.
- Brewfinitly Brewing may also provide select merchandise from the brewery for sale at the events.
- Brewfinitly Brewing shall meet all other requirements required by the municipality for the opportunity to operate the beer garden.

## Needed Support from Parks and Recreation

- Promoting the event within your community via social media, banners, and other media streams to make the event a success and well received by the community.
- Provide amenities that are available for the patrons. This would include portable toilets if none are available at the given location
- Provide guidance on any of the options Brewfinitly Brewing provides if you are unsure about the options

## City of Pewaukee - New Agenda Item

### Agenda Language:

Discussion, direction and possible action regarding Pewaukee Youth Baseball's proposal of an indoor turf facility at Pewaukee Sports Complex.

### Sub Item Agenda Language:

### Background Provided By:

Nick Phalin

### Background:

Pewaukee Youth Baseball President Tim Zeilstra and Parks and Recreation Director Phalin have had preliminary discussion on possibilities of an indoor turf facility at Pewaukee Sports Complex, which was brought to the P&R Board back in May 2025. PYB is proposing to help fund the facility. The attached documents lay out expected costs, PYB funding route, location, some building specs, etc.

### Fiscal Impact:

### Recommended Motion:

**Summary**

- Approximately 15k sq ft (150' by 100') - To the west of PSC 3
- ~11,700 multi-purpose clear-span space - approximately 30' high
- Turf Floor
- Batting Cages
- All season use
- Could host community events and be used as backup for Park & Rec programs (inclement weather)
- Indoor storage (for PP&R and PYB) - 1,800 sq. ft
- Restrooms (1,500 sq. ft)

**Funding:**

City to fund construction and own building; PYB to lease back from city with annual payment (similar to concession stand)  
City would reserve right to rent out to other parties during periods of non-use by PYB

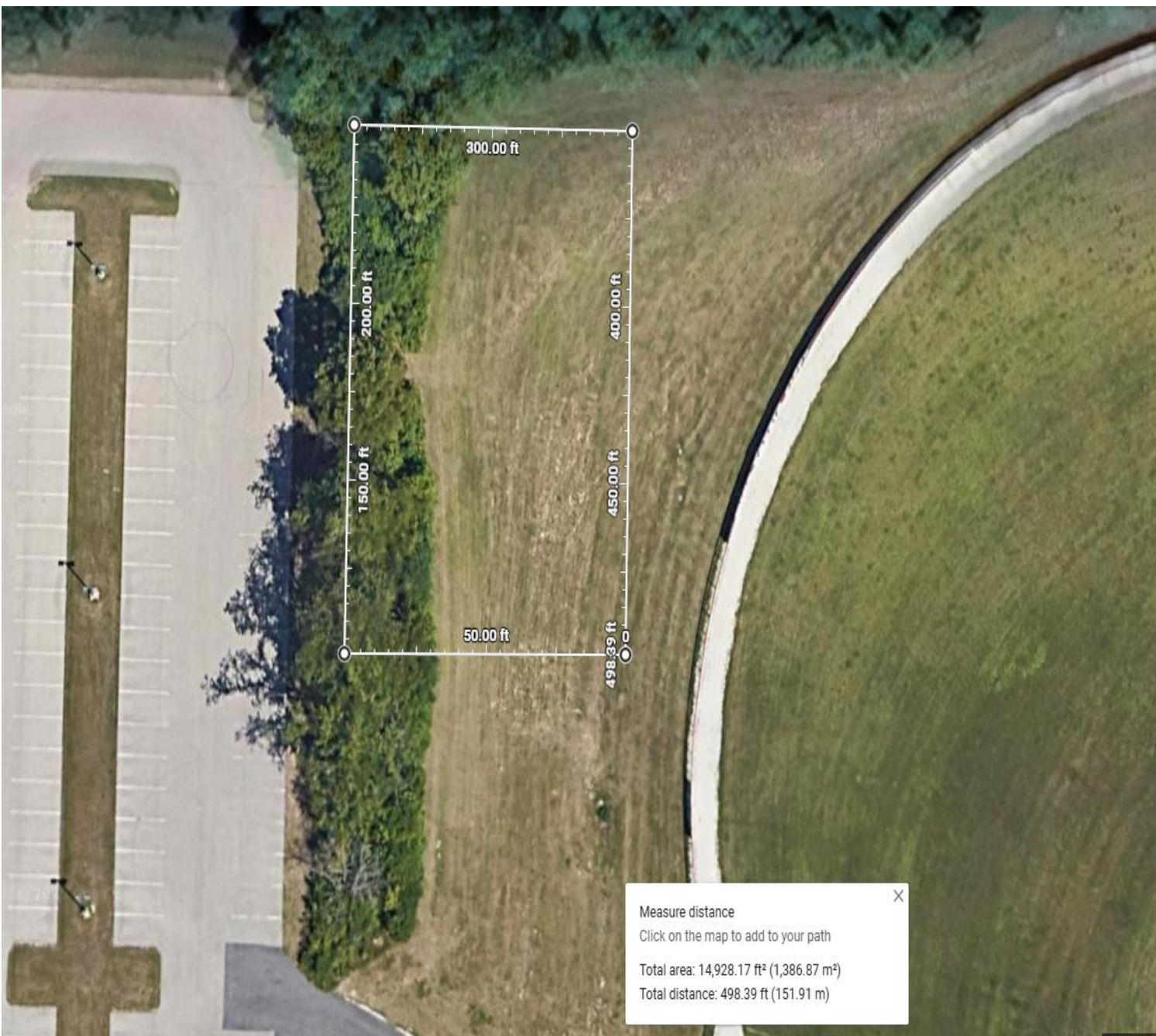
**Cost:**

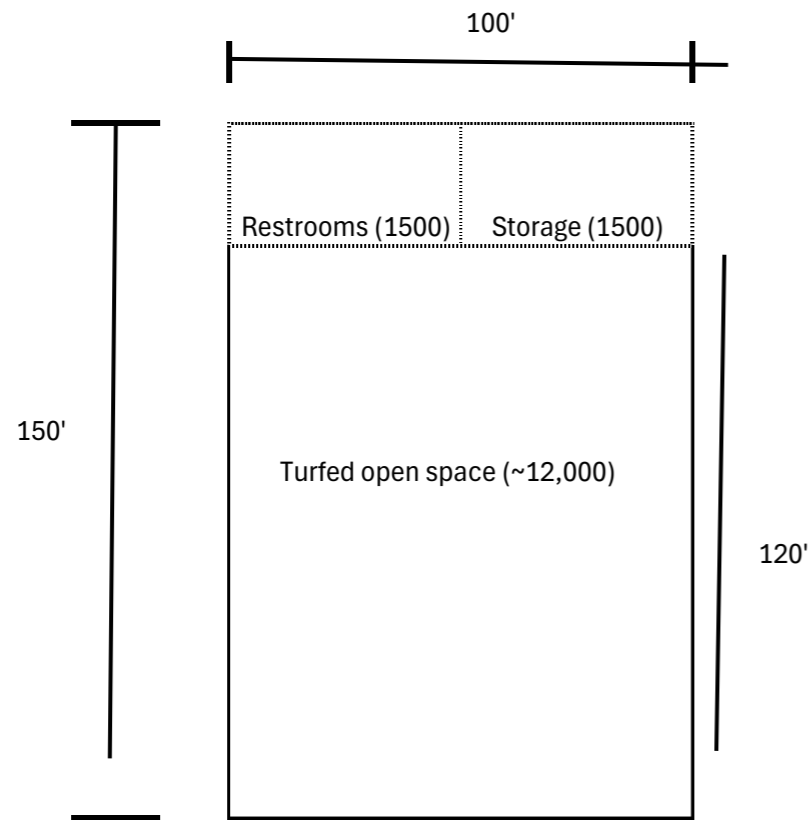
Expecting a cost of \$1 million+

**Questions**

What is the PYB use/schedule?

What % of the whole is PYB willing/interested in paying for?





Cost Estimate

		Price/Sq Ft	Total Sq Ft	
Concrete Slab	\$ 150,000	\$ 10	15,000	
Building	\$ 583,000	\$ 39	15,000	Per Spec TZ @ \$186k building, \$47k; utilities and interior (turf, etc) finishes unknown
Materials/Engineering	\$ 233,000			
Construction Labor	\$ 150,000			
HVAC	\$ 25,000			
Electric	\$ 50,000			
Plumbing	\$ 25,000			
Finishes	\$ 100,000			
Brick Exterior	\$ 125,000	\$ 10	12,500	
Site Work/Grading	\$ 25,000			
Other (10%)	\$ 88,300			
<b>Total</b>	<b>\$ 971,300</b>			

**Layout Feedback**

Preferred storage would be towards a road/parking area

Estimate restroom sq footage ~1,000

Restroom @ 2 x 30' x 15' = 900'

Storage @ 40x18 / 35x21 / 27x27

Entry / Entrance mud area to change clothes/shoes?

Counter/service/office area?

Next Steps Conversation with City Planner

Brick over metal structure? - conform to city zoning/ordinance

Height

Building Dimensions (ft)

Length	150
Width	100
Height	25

**Missing items**

- Tree Removal
- Service of utilities
- Cameras?
- Internet?
- Building protection from HR balls?
- Setbacks
- Stormwater

**Building (including manufacturing of...)**

- HVAC
- Electrical / Gas
- Plumbing

PYB has proposed funding \$600k of the purchase price over a 15-year term

<u>Year</u>	<u>Repayment Amount</u>	
1	\$	40,000
2	\$	40,000
3	\$	40,000
4	\$	40,000
5	\$	40,000
6	\$	40,000
7	\$	40,000
8	\$	40,000
9	\$	40,000
10	\$	40,000
11	\$	40,000
12	\$	40,000
13	\$	40,000
14	\$	40,000
15	\$	40,000
<b>Total</b>	<b>\$</b>	<b>600,000</b>
Expected Purchase Price	\$	971,300
PYB Contribution	\$	600,000
Remaining City Responsibility	\$	371,300

<u>Timeline</u>	<u>Item</u>	<u>Date</u>	<u>Notes</u>
1	Tim meeting	11/24/2025	
2	Fuchs email PYB determine likely costs; amount they can	11/24/2025	No metal showing on building
3	contribute; proposed terms		
4	P&R Board for conceptual		
5	Utilization schedule / rights		
6	CC for conceptual, funding		
7	Choose architect / design		
8	Plan Commission		
9	Bid		
10	Work begins Work complete		

City of Pewaukee - New Agenda Item

Agenda Language:

Discussion and possible action regarding 2026-2030 Park and Open Space Plan.

Sub Item Agenda Language:

Background Provided By:

Nick Phalin

Background:

The attached 2026-2030 Parks and Open Space Plan is included for draft review by the Parks and Recreation Board.

Fiscal Impact:

Recommended Motion:

Motion to approve and recommend to the Common Council and Village Board.



# 2026-2030 PARKS & OPEN SPACE PLAN



# Table of Contents

## Introduction

- P. 4: Boards & Officials
- P. 5: Previous Planning Efforts
- P. 6: Parks and Open Space Plan Purpose

## Section 1: Community Data

- P. 7: Community History
- P. 8: Community Maps
- P. 9: Community Characteristics
- P. 10: Population Statistics
- P. 11: Age Composition
- P. 12: Race and Ethnicity
- P. 13: Income
- P. 14-15: Site Natural Resources

## Section 2: 2021-2025 Goals and Objectives Review

- P. 16-18: Previous Plan Goals, Administrative Goals
- P. 19: Recreation Program Goals
- P. 20-21: Parks Maintenance Goals
- P. 22-24: Development Goals

## Section 3: Current Parks and Recreation Services

- P. 25: Pewaukee Parks Development and Classification
- P. 26: Existing Park, Recreation and Open Space Sites
- P. 27: Pewaukee Parks Map and Amenities
- P. 28-35: City Parks Detail
- P. 36-44: Village Parks Detail
- P. 45: Indoor Facilities
- P. 46-47: Parks and Recreation Programming
- P. 48: Marketing and Promotion of Recreational Programs
- P. 49: Recreation Program Design and Implementation
- P. 50: Community Recreation Services
- P. 51: Future Parks and Outdoor Spaces

## Section 4: 2026-2030 Community Interest Survey

- P. 52: Community Interest Survey Information
- P. 53-59: Survey Questions and Reponse Data

## Section 5: Survey Findings Discussion

- P. 60-66: 2026-2030 Goals and Objectives

## Section 6: Conclusion

- P. 67: Conclusion

## Appendices

### P. 66: Appendix A

Joint Parks and Recreation  
Department Ordinance

### P. 70: Appendix B

Alternative Funding

### P. 71: Appendix C

Community Interest Survey

### P. 75: Appendix D

Interest Survey Question #10  
Responses

### P. 76: Appendix E

Interest Survey Question #16  
Responses

# EXECUTIVE SUMMARY

The Parks and Open Space Plan provides a strategic framework to guide the future of parks, recreation facilities, open spaces, and natural areas throughout the City and Village of Pewaukee. It reflects our community's values and establishes a vision for a well-connected, accessible, and sustainable park system that supports recreation, wellness, environmental stewardship, and community pride.

This plan was shaped through extensive public engagement, including surveys, stakeholder conversations, and community feedback. Residents expressed strong appreciation for Pewaukee's park system and emphasized priorities such as improved trail connectivity, continued maintenance of existing spaces, more opportunities for outdoor recreation, and expanded amenities that serve all ages and abilities.

The plan focuses on several key themes that will guide future decisions and investments: maintaining and enhancing existing parks, expanding trails and connectivity, protecting natural resources, supporting inclusive and accessible recreation, and fostering partnerships and community engagement. These priorities are supported by data analysis, recreation trends, demographic projections, and an evaluation of current conditions within the park system.

Implementation strategies within the plan provide guidance for project prioritization, funding approaches, and phased development to ensure responsible stewardship of community resources. By adopting this plan, Pewaukee positions itself to thoughtfully invest in the future—balancing growth with preservation, and ensuring that parks and open spaces continue to enrich quality of life for residents, visitors, and generations to come.

The Parks and Open Space Plan represents not just a roadmap, but a shared community commitment. It captures what residents value today and lays the groundwork for a vibrant, connected, and resilient parks and recreation system that will support Pewaukee well into the future.

# INTRODUCTION

## Boards and Officials

### **Joint Park and Recreation Board**

The Joint Parks and Recreation Board provides oversight for the Department's operations and advises both the City Common Council and the Village Board on policies governing public park use, as well as on the development and approval of the departmental budget.

The Board meets monthly on the second Wednesday of the month at 6:00 pm at Pewaukee City Hall in the Common Council Chambers. At its monthly meeting, the Board makes recommendations to the respective community regarding large special events, policy and operational decisions, it reviews finances and recommends capital projects and purchases. The meetings are open to the public and the public is encouraged to ask questions or provide feedback.

The Board is comprised of seven members. Four members are City residents, three members are Village residents. Each member is appointed by their respective governing board and one elected official from each community serves on the Board during their term of office.

### **City of Pewaukee Common Council**

#### **Steve Bierce, Mayor**

Spencer Tabbert, Alderperson

Rich Reinbold, Alderperson

Phil Vetterkind, Alderperson

Colleen Brown, Alderperson

Jerry Wamser, Alderperson

Brian Dziwulski, Alderperson

### **Village of Pewaukee Board**

#### **Jeff Knutson, President**

Kelli Belt, Trustee

Bob Rohde, Trustee

Jim Grabowski, Trustee

Kristen Kreuser, Trustee

Rachel Pader, Trustee

Nick Stauff, Trustee

### **Joint Parks & Recreation Board Members**

#### **Brian Dziwulski, City Alderperson**

#### **Kristen Kreuser, Village Trustee**

Del Kaatz Jr., Chairperson (*Term expires 4-30-26*)

Gary Majeskie, City Representative (*Term expires 1-1-28*)

Dave Linsmeier, City Representative (*Term expires 1-1-27*)

David Kelnhofer, Village Representative (*Term expires 4-30-27*)

Eric Krasovich, Village Representative (*Term expires 4-30-26*)

### **Parks & Recreation Staff**

**Nick Phalin**, CPRP, Director

**Monica Kaskey**, CPRP, Recreation  
Manager

**Amy White**, Assistant Recreation  
Supervisor

**Dan Neubauer**, Parks Supervisor

**Tom Scott**, CPSI, Parks Foreman

**Chris Stiyyer**, Parks Laborer

**Brennan Berg**, Parks Laborer

# INTRODUCTION

## Previous Planning Efforts

The Pewaukee Parks & Recreation Department was established as a Joint Department on November 4, 1996 by the Town of Pewaukee through Ordinance 96-19 and on November 19, 1996 by the Village of Pewaukee through Ordinance 429. (The Town of Pewaukee was incorporated into a City in 1999, therefore will be referred to as the “City” from now on). Prior to this establishment, each community ran their own parks and recreation operation. The Joint Parks & Recreation Department began on January 1, 1997. See appendix A.

The ordinance states that the Joint Department shall be responsible for provision of recreation opportunities, activities and programs in the City and Village parks, the maintenance of the City and Village parks and such other duties as assigned by the Joint Parks & Recreation Board, which shall be advisory to the City Council and Village Board.

Past planning efforts include the Park and Open Space Plan for the Town and Village of Pewaukee 1980 that was created by SEWRPC under the direction of the Town and Village of Pewaukee Park and Recreation Commissions.

The 1980 plan was created to provide recommendations to the Town and Village of Pewaukee Park and Recreation Commissions concerning the preservation, acquisition, and development of needed park and open space lands within the Town and Village of Pewaukee.

In 1994, the Park and Open Space Plan Addendum was created only in the Village of Pewaukee. This plan was an addendum to, and extension of, the 1980 joint plan and was designed to update the Village’s portion of the park system. The plan projected park and open space needs for the Village out to the year 2010. The Town of Pewaukee was not included in the analysis or recommendations of this report.

In 1999, two years after being established as a Joint Department, a consultant was hired to create the Joint Comprehensive Park & Open Space Plan. This was prepared by Foth & Van Dyke under the direction of the Joint Parks and Recreation Board. This Plan was prepared to provide recommendations to the (joint) Pewaukee Parks and Recreation Department concerning acquisition, maintenance standards, staffing and facility standards as well as future needs of the Department.

In 2006, an Addendum to the Joint Comprehensive Park & Open Space Plan was created in-house. The purpose of this plan was to update the information to keep the Department eligible for potential grant opportunities through the Department of Natural Resources.

Since that time, this document has been updated in 2013, and again in 2020, to focus on new goals and initiatives of the department.

# INTRODUCTION

## Parks and Open Space Plan Purpose

A Parks & Open Space Plan provides an outline for park development and ongoing maintenance of the community-wide park space system. This tool should be used by both municipalities for budget planning purposes and assigning priorities for project implementation. This document should be updated on a five-year basis to keep current with recreational demand, changes in facility needs, and to maintain eligibility for Wisconsin Department of Natural Resources (WIDNR) and other agency grant programs. Adoption and integration into the City and Village of Pewaukee Master Plans is also an important step to ensuring that the recommendations and policies can be effectively carried out.

### **This Parks and Open Space Plan will be for 2026-2030.**

**The plan will be presented in five sections.**

#### **Section 1: COMMUNITY HISTORY AND DEMOGRAPHICS**

This section will include a historical background of Pewaukee, maps of the park spaces, and current and estimated census data.

#### **Section 2: 2019-2025 GOALS AND OBJECTIVES REVIEW**

This section will include a historical background of Pewaukee, maps of the park spaces and current and estimated census data.

#### **Section 3: CURRENT PARKS AND RECREATION SERVICES**

This section will include an inventory of the current parks and recreation services offered in Pewaukee. This section will also include an inventory of recreational services provided by local groups and clubs outside of the Parks & Recreation Department.

#### **Section 4: COMMUNITY INPUT SURVEY RESULTS**

This section will include the Community Input Survey and the details and summarized results of the responses.

#### **Section 5: NEW GOALS AND OBJECTIVES**

This section will present the goals and objectives in place for this five-year plan along with details about how they will or could be implemented, including funding and management information.

#### **Section 6: CONCLUSION**

# SECTION 1: COMMUNITY HISTORY

## History of Pewaukee Parks and Recreation Department

The Menomonee and Potawatomi tribes used to hunt, fish and camp on their journeys to and from the north and south on what they called the Pee-wauk-kee-win-ick or Sakaegan. Though the name Sakaegan was never used by the Menomonees or Pottowatomies, its translation from the Sac and Fox language is "Snail Lake", a rather unpleasant name which was used for several years even after white settlers came to dwell on its shores.

In 1836, in Vermont, a group of men began to think longingly about the western frontier. Among them was Deacon Asa Clark. He, along with Mr. Chenry, who later settled in Beloit, started westward in the fall of 1836. They arrived in Milwaukee, then a village of less than 1,000 people, and there Clark formed a partnership with the firm of Childs and Wheelock for the purpose of building a mill on Snail Lake.

In April, 1837, the Deacon and his oldest son set out to build a home near his new mill. This house is now the home of the Pewaukee Area Historical Society.

In 1842, many families arrived to Snail Lake which included many talented individuals who helped shape the Snail Lake community.

Those individuals included Professor Alexander North, George Peter Peffer who created the Pewaukee Apple Tree and Dr. Margaret Caldwell, the first woman physician in Waukesha County among many others.

In the early 1900s Pewaukee became a rather popular resort area. Tourists were able to visit by train as the expansion of the railroad included a stop in Pewaukee. With the popularity of Pewaukee, it did not take long before development started to occur around the lake.

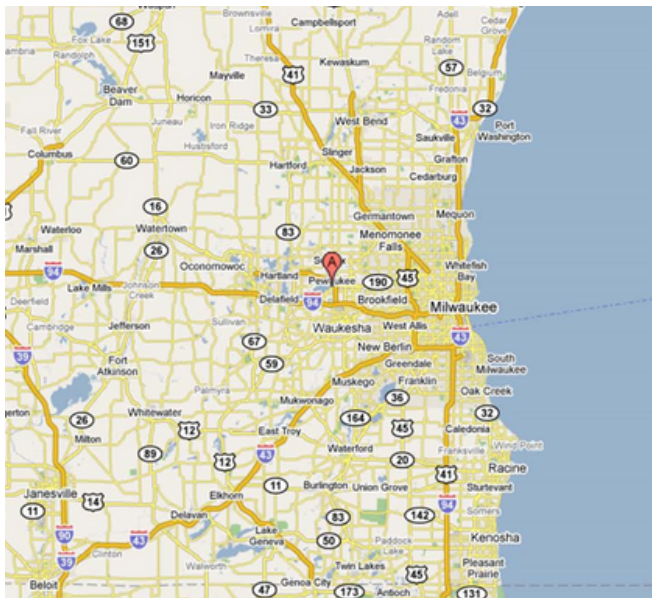
Pewaukee also became known for its ice industry. When the last glacier left the lake, it left the perfect setting for an ice industry. With the opening of the railroad, ice was easily moved out of the area and sold to other communities.

The framework and history of Pewaukee is rather eventful and cannot possibly be recollected in a summarized form. One could say that Pewaukee was built, in part, on recreation as it was a great place to visit.

The Pewaukee Parks & Recreation Department, as it is now, was established as a Joint Department (servicing both the City and the Village of Pewaukee) in 1997. The Department is responsible for providing residents

# SECTION 1: COMMUNITY MAPS

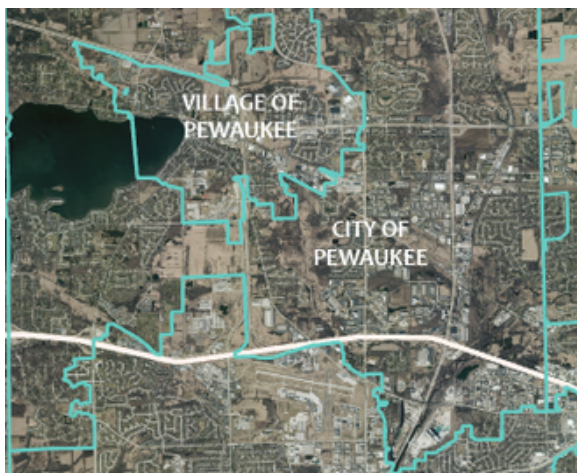
**Figure 1.0 Location Map**



The City and Village of Pewaukee are located approximately 20 miles west of Milwaukee, Wisconsin and 60 miles east of Madison, Wisconsin.

Neighboring communities include Delafield, Sussex, Brookfield, and Waukesha. Major transportation routes include arterial streets and highways including I-94, USH 18, STH 16, STH 164, STH 74 and STH 190.

**Figure 2.0 Location Map**



City and Village of Pewaukee borders and boundaries.

The City of Pewaukee covers approximately 23 square miles and the Village of Pewaukee covers 4.4 square miles for a total of 27.4 square miles combined.

Two railroads traverse the Pewaukee area, including the CP Rail System (formerly Soo Line) which provides freight service over an east-west line, and the Wisconsin Central Ltd. Rail System which provides freight service over a north-south line.

The Waukesha County/Crites Field Airport, a 389 acre general utility airport, is located adjacent to the City of Pewaukee.

# SECTION 1: Community Characteristics

## Community Data

A clear understanding of community demographics is essential to the development of an effective Parks and Open Space Plan. Demographic data—such as age distribution, household composition, income levels, and population growth trends—provides insight into who we serve and how recreation needs may evolve over time. By analyzing these characteristics, the Department can make informed decisions about the types of facilities, programs, and park amenities that will best support the well-being of residents. This ensures that the Department is responsive to current and future needs, and aligned with the community's values.

### Population Statistics

Population change is the primary component in tracking a community's past growth, as well as predicting future population trends. Population characteristics relate directly to a community's recreational facility/program needs. However, it should be noted that over time there are fluctuations in the local and regional economy which generally cannot be predicted. These fluctuations may greatly influence the community's population growth and related characteristics.

### Age/Gender Composition

A review of the population by age cohort, or age groups, can serve as an indicator of local population needs. For instance, a large school-age population would require different recreational facilities than a predominantly elderly population.

### Ethnic Background / Racial Composition

Understanding the racial and ethnic composition of the community is an important component of equitable parks and open space planning. Different cultural groups may have distinct recreation interests, social traditions, gathering practices, and expectations for how public spaces are used. By recognizing the diversity present within Pewaukee, the Department can ensure that park amenities, programming, and communication strategies are welcoming, relevant, and accessible to all residents.

### Employment Data

Incorporating employment data into the planning process allows the Department to design park spaces and recreation services that reflect how residents live, work, and balance daily life—resulting in a park system that is convenient, relevant, and supportive of overall community well-being.

### Site Natural Resources

The physical characteristics of an area—such as topography, soil conditions, water features, vegetation, wildlife habitat, and existing land uses—play a central role in determining how parks and open space can be designed, developed, and maintained. These natural features influence where recreation facilities can be located, what types of activities are appropriate, and how people experience outdoor spaces. Understanding the land's physical conditions helps ensure that park development is both environmentally responsible and cost-effective. For example, protecting wetlands and natural drainage patterns reduces flooding risks, while preserving mature trees and natural habitat areas enhances ecological health and community character. Likewise, recognizing slopes, elevation changes, and soil stability supports safe and sustainable trail and facility construction.

# SECTION 1: Community Data

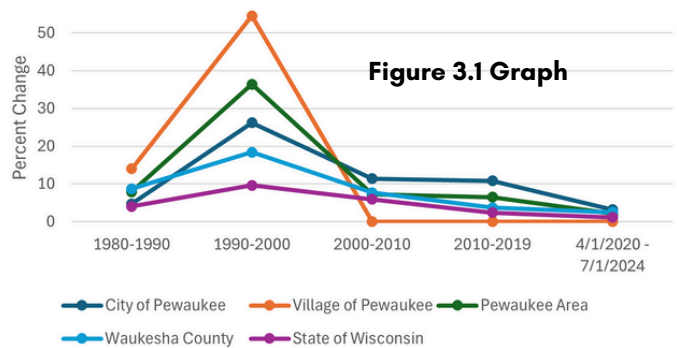
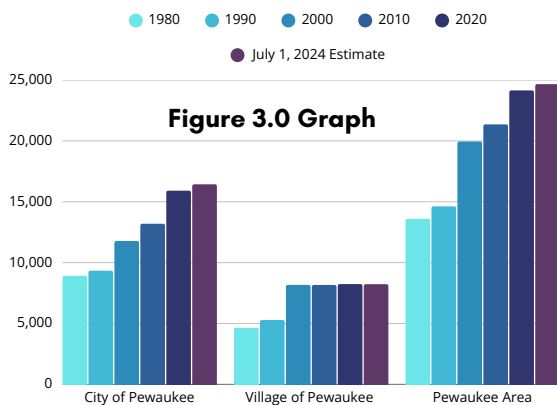
## Population Statistics

Figure 3.0

	1980	1990	2000	2010	2020	July 1, 2024 Estimate
<b>City of Pewaukee</b>	8,922	9,339	11,783	13,195	15,914	16,437
<b>Village of Pewaukee</b>	4,637	5,287	8,170	8,166	8,238	8,230
<b>Pewaukee Area</b>	13,598	14,626	19,953	21,361	24,152	24,667
<b>Waukesha County</b>	280,203	304,715	360,767	389,891	406,980	417,029
<b>State of Wisconsin</b>	4,705,642	4,891,769	5,363,675	5,686,986	5,893,718	5,960,975

Figure 3.1

	% Change 1980-1990	% Change 1990-2000	% Change 2000-2010	% Change 2010-2020	% change 2020-2024
<b>City of Pewaukee</b>	4.70	26.20	11.40	10.80	3.29
<b>Village of Pewaukee</b>	14.00	54.50	0.00	0.00	0.00
<b>Pewaukee Area</b>	7.90	36.40	7.20	7.20	2.13
<b>Waukesha County</b>	8.70	18.40	7.70	7.70	2.47
<b>State of Wisconsin</b>	4.00	9.60	5.90	5.90	1.14

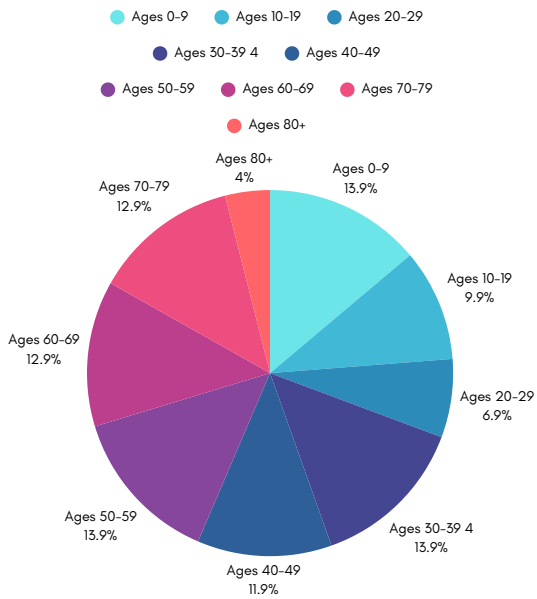


Both Figure 3.0 and Figure 3.1 depict the continued growth of the City of Pewaukee. The Village of Pewaukee growth has slowed since the year 2000. Overall, the Pewaukee area's population has increased from 14,626 persons in 1990 to an estimated 24,667 persons in 2024 an overall increase of 68.65% or 10,041 individuals.

# SECTION 1: Community Data

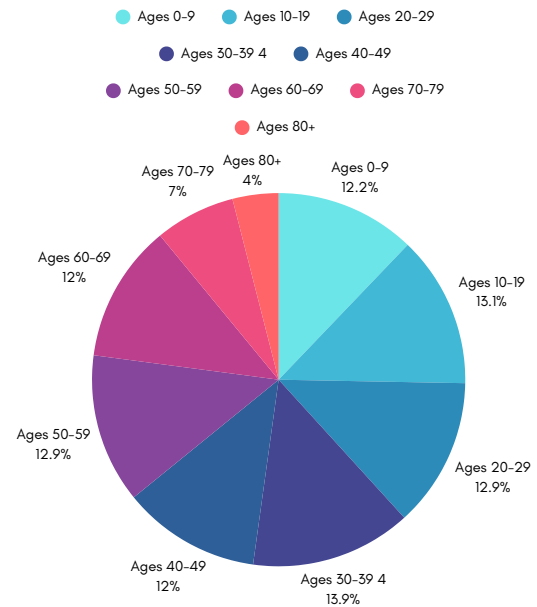
## Age Composition

**Figure 4.0 Pewaukee Area (City and Village)**



**Median Age: 43.5 years**

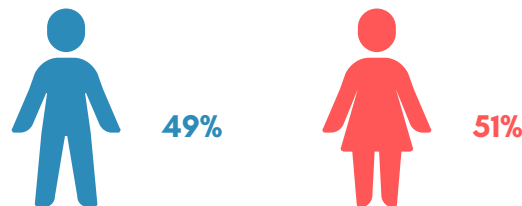
**Figure 4.1 Milwaukee-Waukesha, WI Metro Area\***



**Median Age: 38.5 years**

## GENDER COMPOSITION

**Figure 4.2 Pewaukee Area (City and Village)**



The median age in Pewaukee (City and Village combined) is approximately 10% higher than the figure in the Milwaukee-Waukesha, WI Metro area, and also 10% higher than the median age in the state of Wisconsin (40.1 years). This statistic is of note because it indicates the necessity of providing programs and amenities for an aging population. Trending programs since the last Parks and Open Space Plan have shown an increase in participants over the age of 60 from 225 total participants in 2020 to 492 participants in 2025 (YTD November, 2025). This is an increase of 119%.

Reasons for this extreme increase:

- Increase in Senior Living Facilities located in Pewaukee

- Addition of Open Pickleball Play

- Increased interest in senior fitness classes after COVID pandemic.

The gender composition is the same breakdown within .05% of the Milwaukee-Waukesha Metro Area and the State of Wisconsin.

Combined Statistical Area (CSA)

Officially specified by the Office of Management and Budget, a CSA combines adjacent CBSAs which have a moderate degree of social and economic ties. Ties between the component CBSAs in a CSA are not as strong as ties between the counties in any of the individual CBSAs.

# SECTION 1: Community Data

## Race and Ethnicity

Figure 5.0 Pewaukee Area

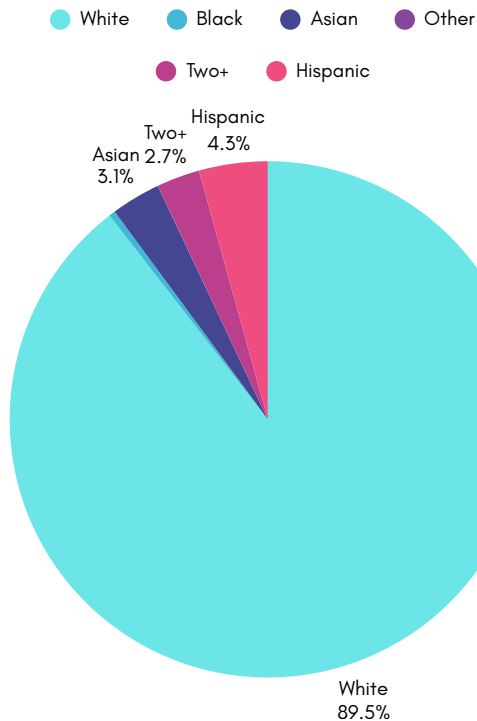
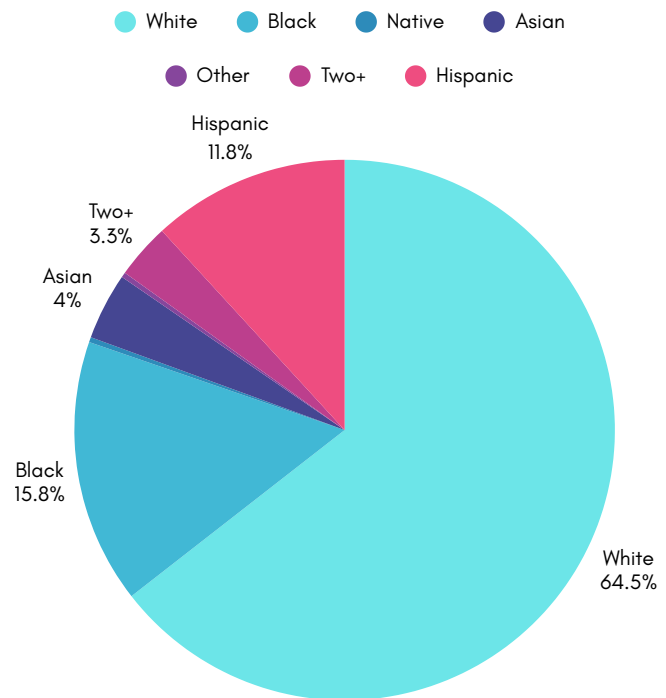


Figure 5.1 Milwaukee-Waukesha, WI Metro Area



The City of Pewaukee has a population that is predominantly White, with approximately 89.5% of residents identifying as White. This proportion is higher than both the Milwaukee-Waukesha metro area (64.4%) and the State of Wisconsin overall (79.2%). Pewaukee has relatively smaller percentages of residents who identify as Black, Asian, Native American, or Hispanic when compared to the broader region and the state. Residents identifying as Black make up 0.4% of the local population, compared to 15.8% in the metro area and 6% statewide. Asian residents represent 3.1%, which is somewhat comparable to the metro area (4%) and slightly higher than the state (2.9%). Individuals identifying with two or more races make up 2.7% of Pewaukee's population, similar to regional and state levels. Approximately 4.3% of Pewaukee residents identify as Hispanic or Latino, which is lower than both the metro area (11.8%) and statewide (7.8%).

Understanding the racial and ethnic composition of Pewaukee is important for ensuring that parks, programs, and community services are inclusive and reflective of all residents. While Pewaukee's population is less racially and ethnically diverse than the broader Milwaukee-Waukesha region and the state overall, the community is gradually changing. Recognizing these trends allows the Parks & Recreation Department to plan programs and events that are welcoming to all.

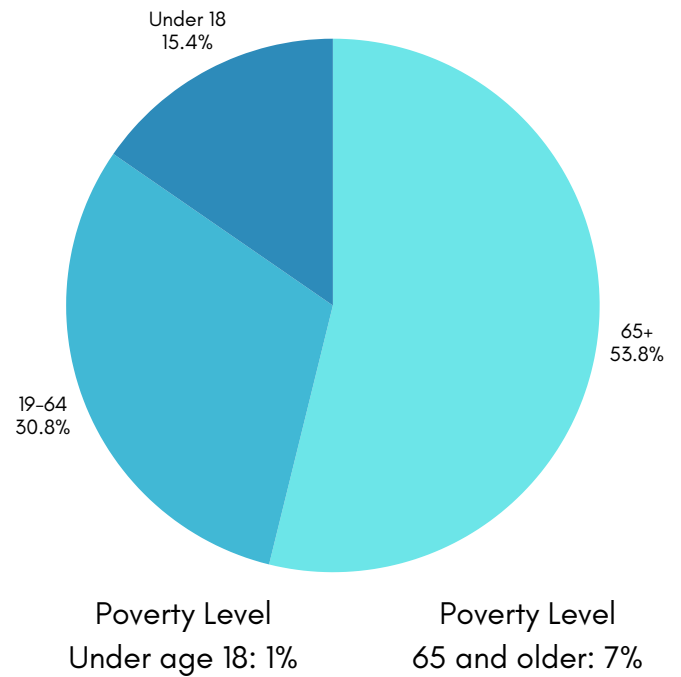
# SECTION 1: Community Data

## Income

**Figure 6.0 Pewaukee Area Household Income**



**Figure 6.1 Pewaukee Area Household Income**



**The average per capita income is \$63,774, the median household income is \$112,093**

Resident income information is essential to determine pricing models, subsidization levels and affordable access to programs and facilities.

**Pewaukee area household income is about 1.4 times the amount of that in the Milwaukee-Waukesha, WI Metro Area and 1.5 times the amount in the state.**

# SECTION 1: Community Data

## Site Natural Resources

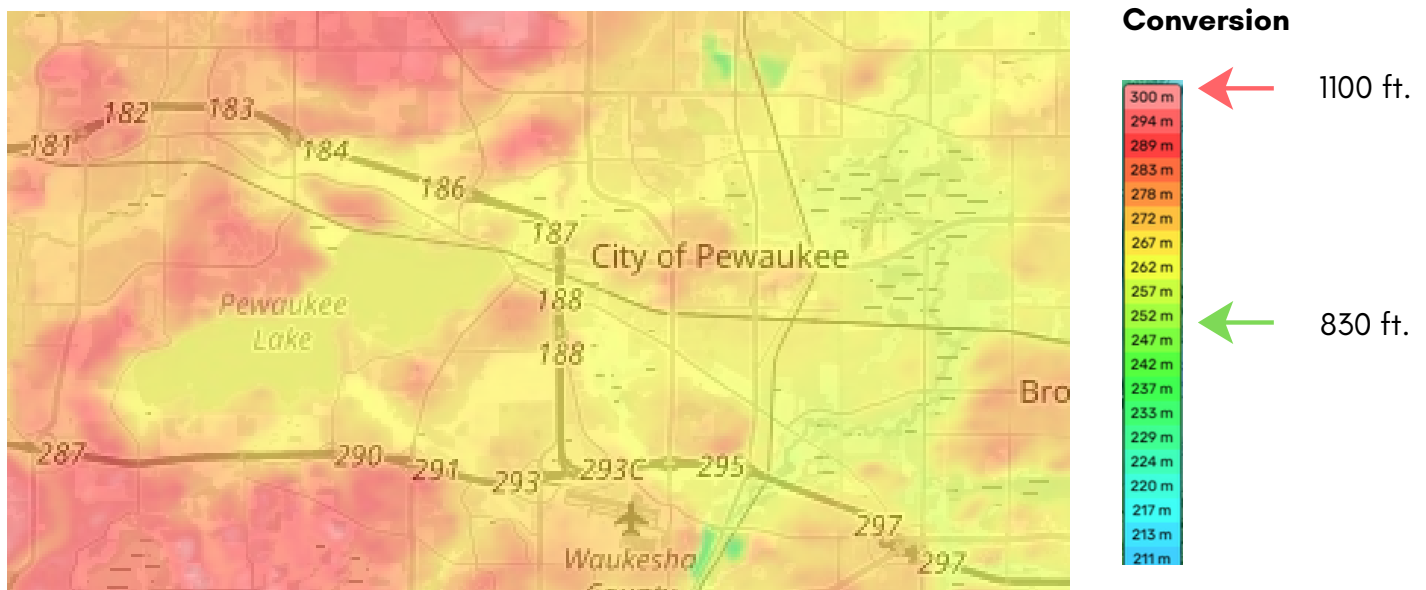
The topography or relative elevation of the land surface within the Pewaukee area has been determined generally by the configuration of the bedrock geology in combination with overlying glacial deposits.

Waukesha County sits in Wisconsin's Eastern Ridges & Lowlands and includes the glacial Kettle Moraine ridge. Elevations on the plain are commonly ~700-900 ft, while the Kettle Moraine rises above 1,000 ft; the county high point is Lapham Peak at 1,233 ft.

Pewaukee lies in the county's "Lake Country" lowlands with gentle, rolling relief around Pewaukee Lake.

Elevations within the Pewaukee area range from a low of approximately 830 feet above mean sea level in the southeastern part of the area along the main stem of the Fox River, to a high of over 1,100 feet above mean sea level in the southwestern portion of the area.

**Figure 7.0 Elevation Levels in the greater Pewaukee Area**



Pewaukee's landscape reflects the gentle, rolling lake country that characterizes the central portion of Waukesha County. While the county overall ranges from lowland plains to the steeper ridges of the Kettle Moraine, Pewaukee's topography remains more moderate, defined by gradual slopes, glacially formed hills, and the presence of Pewaukee Lake. This setting supports a variety of recreation opportunities—water access, trail connections, and scenic open spaces—while maintaining the accessible terrain and community-centered feel that shape the local parks and recreation experience.

# SECTION 1: Community Data

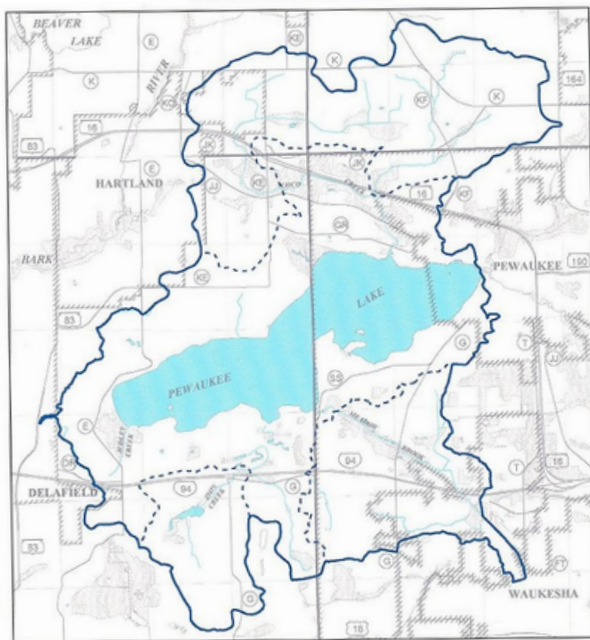
## Site Natural Resources

There is one major lake (greater than 50 acres) located in the Pewaukee area, Pewaukee Lake. Pewaukee Lake is a pre-glacial erosion valley blocked by glacial drift, and in more recent times, impounded by man. The original lake was only, what is now the westernmost basin which is located outside of the Pewaukee area. The construction of a dam at the present outlet inundated marshlands east of the original basin to produce the present lake, which is approximately twice the size of the original lake. The surface area of the lake is 2,493 acres; 45% or 1,117 acres of which are located within the Pewaukee area. The lake has a maximum depth of 45 feet and a mean depth of 15 feet. There are approximately 13.7 miles of shoreline, 6.4 miles of which are located in the Pewaukee area.

Within the Pewaukee area there are approximately 18.4 miles of major streams. Major streams are defined as perennial streams which maintain, at a minimum, a small continuous flow throughout the year except under drought conditions.

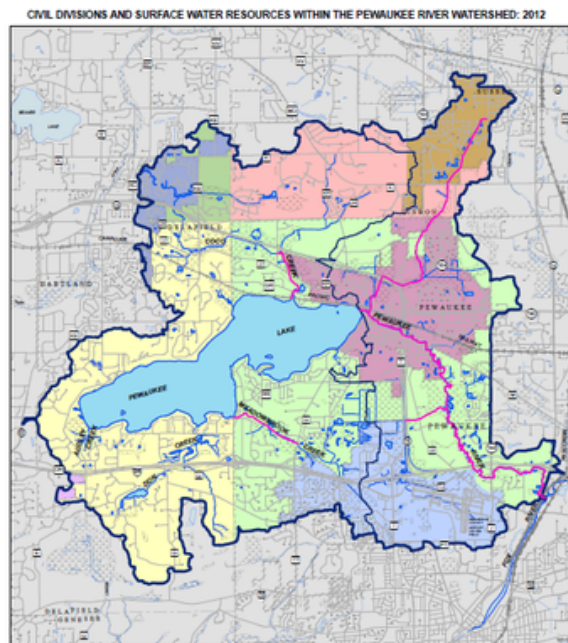
Wetlands cover approximately 13% of the Pewaukee area. Large areas of wetlands are located along the main stem of the Pewaukee River in the City of Pewaukee, along the western side of USH 16 in the City of Pewaukee, north of Pewaukee Lake in the northwestern portion of the City of Pewaukee, within the northern portion of and north of the Village of Pewaukee, and in the northeastern portion of the City of Pewaukee.

**Figure 8.0 Pewaukee Lake**



- Total drainage area tributary to Pewaukee Lake
- - - Direct drainage area tributary to Pewaukee Lake
- Surface Water

**Figure 8.1 Pewaukee Watershed**



- |  |   |   |
|--|---|---|
| <span style="color: purple;">■</span> City of Delafield    | <span style="color: green;">■</span> Town of Merton       | <span style="color: lightblue;">■</span> Surface Water    |
| <span style="color: lightgreen;">■</span> City of Pewaukee | <span style="color: blue;">■</span> Village of Hartland   | <span style="color: pink;">—</span> Stream Surveyed       |
| <span style="color: yellow;">■</span> City of Waukesha     | <span style="color: purple;">■</span> Village of Pewaukee | <span style="color: blue;">—</span> Stream                |
| <span style="color: orange;">■</span> Town of Delafield    | <span style="color: brown;">■</span> Village of Sussex    | <span style="color: blue;">—</span> Watershed Boundary    |
| <span style="color: red;">■</span> Village of Lisbon       |   | <span style="color: blue;">—</span> Subwatershed Boundary |

# SECTION 2: 2021-2025 Goals and Objectives Review

## Previous Plan Goals

The 2026-2030 Parks & Open Space Plan builds upon the foundation established in the 2021-2025 plan, reflecting both the progress made and the evolving needs of our community. Since the adoption of the previous plan, many of its goals have been successfully implemented – from park facility upgrades and the development of new recreation amenities to enhanced community programming and alternative revenue development. These accomplishments demonstrate the Department’s continued commitment to providing high-quality parks, preserving open space, and enriching the quality of life for residents and visitors alike. This section will summarize the status of the previous plans goals and objectives.

## 2021-2025 Parks and Open Space Plan Goals and Objectives

### Administrative Goals

#### **Increase knowledge and visibility of the Department within the community.**

- Implement a marketing plan.
- Continue participation in local and county civic organizations
- Mail Activity Guide to all Pewaukee residents three times per year
- Continue to utilize and expand seasonal activity guide to include more community based activities, resources and events.

### Summary.

New and expanded marketing efforts include a stronger presence on social media, adding paid Facebook campaigns for large community events, increased media communication and purchasing ad space in local publications.

Parks & Recreation staff working closely with local organizations such as Pewaukee Youth Baseball, the Pewaukee Kiwanis Club, Positively Pewaukee, the Pewaukee Historical Society, the Pewaukee Women’s Club, community churches, Pewaukee School district and many more. These relationships have helped build an avenue for sponsorships and partnerships that benefit the Department in maximizing park facilities and services to the community.

The seasonal Activity Guide five years ago was generally 16 pages and mailed to all property owners. In the last four years nearly all the seasonal guides have increased to 20 pages which shows a significant increase in the amount of space needed to display recreation programs, and are now mailed to all residents in the City and Village.

An “Around Town” section of the Summer Activity Guide now includes dates and locations of numerous local community events run by other organizations. This is as a service to our residents and not as advertisements.

Eleven new community based events were created and implemented since 2021, six of which have become annual events.

# SECTION 2: 2021-2025 Goals and Objectives Review

## Administrative Goals (Cont.)

### **Increase funding of the Pewaukee Parks and Recreation Department operations.**

- Encourage the development of new private/public partnerships to offset Department expenses.
- Monitor and apply for county, state, and federal grant funding for parks system improvements.
- Continue to foster and grow the relationship with the Friends of Pewaukee Parks organization for community engagement and fundraising.
- Maximize revenues while remaining competitive in the marketplace for park rentals and recreation programs.
- Seek sponsorships and potential naming rights for major parks and facilities within the parks system.
- Update the Parks and Open Space Plan every five years.

### **Summary**

The Department has increased the development of new private and public partnerships. These partnerships have led to sponsorships, donations and other alternative revenue sources.

In 2024, a Partnership Opportunities guide was designed and distributed to local businesses presenting sponsorship of programs and events for 2025. We saw a 69% increase in sponsorships from 2021-2025. See Appendix B.

The Friends of the Parks organization has been more active in the community and in raising funds for Department needs in the following ways:

- Parks In-Bloom Program - volunteers help to manage landscaping projects saving staff wages.
- Fundraising at Events - Friends sell things like concessions and novelties at events raising money.
- Re-curring Donations - Friends set up a monthly giving option for those who would like to donate consistently
- Duck Race - Although not run directly by the Friends group, proceeds from the event are gifted to the organization.

Every few years we analyze our park rental spaces to be sure the pricing is reasonable and competitive. We review items like frequency of rentals for the previous year, neighboring community's park rental rates, facility quality, improvements, and more, to determine our park rental rates. Our park rentals are very popular and were previously underpriced. Rental rates have approximately doubled since 2020. Today's rates are indicative of supply and demand for the space available for casual rentals in Pewaukee and Waukesha County.

New policy and pricing strategies in addition to new programs has increased program revenue from \$315,000 in 2021 to \$575,000 in 2025(YTD). This is an increase of 183%.

This Parks and Open Space Plan is scheduled to be updated in 2030.

# SECTION 2: 2021-2025 Goals and Objectives Review

## Administrative Goals (Cont.)

### **Improve and increase staff development efforts and provide necessary support.**

- Fund staff attendance at national and state conferences.
- Send staff to workshops and professional development opportunities.
- Provide adequate staffing levels to administer programs and maintain parks.
- Provide adequate office space and department equipment.
- Provide opportunities for additional staff training through agencies and organizations such as NRPA, WPRA, WDNR and others.

### **Summary**

Over the last five years Parks and Recreation Staff have attended WPRA state conferences, NRPA national conferences or both, or have been able to gain access to these learning opportunities virtually. Staff have also participated in more professional development opportunities including financial sustainability certification courses, Pryor online learning portal, NRPA and WPRA webinars and presentations and local learning in the areas of marketing, media and AI.

In 2023, a full-time Recreation Coordinator position was added to the Department. This addition expanded programming while allowing other staff to focus on alternative revenue, marketing, and community engagement.

There has been no expansion of office space or working spaces that have resulted in a permanent location for Parks Maintenance Staff and the added Recreation Coordinator. A City Hall remodeling project is scheduled to begin in the next year that will assist with these needs.

# SECTION 2: 2021-2025 Goals and Objectives Review

## **Recreation Program goals**

### **Expand program offerings and opportunities in the community.**

- Create additional non-traditional revenue streams such as sponsorships, partnerships, and new events.
- Offer additional programs in the areas of: adults, water/lake related programs, special events, evening and weekend programs, and outdoor winter recreation.
- Consider hiring a Recreation Coordinator to help oversee additional opportunities.

### **Summary**

Non-traditional revenue streams in programming has been achieved through expansion of sponsorships and partnerships, with an increase of 69% from 2021 to 2025. See Appendix B.

Adult programming has seen a big increase in the area of senior fitness classes. Other areas of growth are enrichment programs like the arts, cooking, technology and social events for seniors. We have seen a 41% increase in participation for those 60 years and older since 2021.

No adult water/lake related programs were created and implemented, nor were winter-specific recreation opportunities. This goal will be reviewed to determine if it is a need the community is requesting from the 2025 Community Survey data.

Eleven new community events were added since 2021. Most of which were supported by event sponsors and some of which also provided the Friends of the Parks the opportunity to sell items and concessions for future Parks and Recreation Department needs. Out of eleven, five have turned into annual events.

### **Provide more opportunities for pickleball for Pewaukee residents.**

- Convert (when renovating existing surface) an existing tennis court to permanent pickleball courts or multi-use courts for the use of passive recreation.
- Develop pickleball clinics, leagues, or tournament play.

### **Summary**

Both Wagner Park tennis courts were converted to eight permanent Pickleball courts in Fall of 2022. This amenity brings hundreds of players to the park for scheduled open Pickleball play and clinics. The Department offered scheduled Open Play for adults, bringing in over \$52,000 in 2023 - 2025. Youth Pickleball camps were also offered each summer with a total enrollment of 57.

# SECTION 2: 2021-2025 Goals and Objectives Review

## Parks Maintenance Goals

### Update South Park playground equipment and grading.

- Replace playground equipment that was removed due to safety concerns.
- Improve grading issues to help mitigate park flooding.

### Summary

2021: South Park playground was replaced and relocated.

2021: South Park grading issues were repaired and resulted in less park flooding during heavy rains.

### Improve ball diamond conditions throughout the parks system.

- Remove the lip between infield dirt and outfield grass, grade infields and add appropriate ball diamond mix at Nettesheim Park (2 diamonds), Kiwanis Village Park (3 diamonds)
- Remove weeds and create formal warning track at Pewaukee Sports Complex.

### Summary

One ball diamond at Nettesheim park was completely regraded and improved. The second diamond has been improved by parks maintenance staff, but could use additional resources.

#### Kiwanis Village Park Diamond Updates

- Scoreboards (2)
- Diamond infield material, regraded, sod

#### Diamond 2

- LED lighting conversion upgrade, underground wiring and transformer
- Backstop and infield fencing replaced

Diamond 3 was determined to be unplayable and was transitioned into green space.

The Pewaukee Sports Complex diamond warning tracks are sprayed and kept clear so to be more defined.

# SECTION 2: 2021-2025 Goals and Objectives Review

## Parks Maintenance Goals (Cont.)

### **Create diversity among park amenities throughout the parks system.**

- Develop all-inclusive playground and splash pad at Pewaukee Sports Complex.
- Determine the best use for Balmer Park woods and complete the redevelopment to either disc golf, dog park, or other purpose.
- Consider 'Ninja Playground' instead of traditional replacement equipment.
- Determine the possibility of a dog park in the parks system and move forward with an appropriate plan.

### **Summary**

After four years of fundraising, the Play Pewaukee All-Inclusive Playground and Garrison's Splash pad were constructed at the Pewaukee Sports Complex. They officially opened to the public Friday, August 29, 2025.

The Balmer Park woods area had many Ash trees, most of which were dead and decaying due to the invasive Emerald Ash Borer beetle. In 2024, most of the trees were completely removed. There are not plans to redevelop this area of land to another purpose.

There are not currently any plans for a permanent dog park. After considering multiple areas in the parks system, there is not space at our locations large enough to serve this purpose. The fund balance is still growing with the intent to keep it in case there is a land acquisition or repurposing.

# SECTION 2: 2021-2025 Goals and Objectives Review

## **Development Goals**

### **Keep the public informed of current development projects.**

- Develop an area on the Department website that includes updates on park projects. Promote through social media.

### **Summary**

The City's Park and Recreation webpage has had park updates available for the public to see. Social media has been more useful in sharing ongoing updates to the community, primarily using Facebook. Community engagement with these posts have been shared organically through social media platforms.

### **Increase the amount of walking trails in the parks system.**

- Add a walking trail to the Pewaukee Sports Complex
- Install fitness equipment along the walking trail at the Pewaukee Sports Complex.
- Improve Simmons Woods trail system signage, trail markers, and entrance aesthetic.
- Investigate opportunities for easement and installation of walking path along the Pewaukee River in the Village.
  - Support Pewaukee River Partnership.
  - Relay DNR opportunities when available.

### **Summary**

The playground and splashpad installation at the Pewaukee Sports Complex had approximately 1,900 feet of walking trails (1/3 mile loop), and another 400 feet of asphalt through the playground and splash pad to the baseball concessions bathroom.

There has not been any additional discussion about adding fitness equipment at the Sports Complex.

The Simmons Woods trail system has had some updates to trails and the boardwalk and alternative funding is being pursued for additional trail marker updates through the Friends of the Parks.

The installation of a walking path along Pewaukee River, additional Village initiative never gained traction.

# SECTION 2: 2021-2025 Goals and Objectives Review

## Development Goals (Cont.)

### **Plan and further develop unused area of Koepp Riverside Park.**

- Develop seating areas and shelter allowing for accessible passive use, as well as natural garden areas.
- Utilize the nature area at the North ends of the park including walking paths and accessible seating (requiring the removal of brush and shrubs).
- Complete a river walk bridge between the current walkway and the park shore.

### **Summary**

Three benches have been added to Koepp park for public seating. The Pewaukee River Partnership is working in conjunction with the Village and Engineers to determine the possibility of an additional bridge connection at the north end of Koepp Park.

### **Plan and implement changes to Lakefront Park to maximize use and accessibility among swimmers, boaters, fishermen, and lake visual users.**

- Improve and/or increase the size of the swim area to accommodate more people, including people with disabilities. Limit interactions between boat shore docking and swimmers.
- Increase the amount of transient boat docking slips while accommodating those with disabilities.
- Design and build the next generation fishing pier and boardwalk area while increasing access to individuals with disabilities.
- Remove obstacles including concrete seating area to avoid tripping hazards and allow for more efficient park maintenance.

### **Summary**

New swim buoys were purchased and installed to better identify the swim area. A transient dock was added providing docking areas for boats adding eight new transient boat slips. A new fishing pier was installed with ADA compliant walkway and access. Concrete was removed from the seating area, removing tripping hazards.

# SECTION 2: 2021-2025 Goals and Objectives Review

## Development Goals (Cont.)

### **Create a vision and implement improvements to the area currently containing the Pewaukee Athletic Association fields and structures at Kiwanis Village Park.**

- Develop seating areas and shelter allowing for accessible passive use, as well as natural garden areas.
- Utilize the nature area at the North ends of the park including walking paths and accessible seating (requiring the removal of brush and shrubs).
- Complete a river walk bridge between the current walkway and the park shore.

### **Summary**

The structure at Kiwanis Village Park near the previous PAA diamonds was removed for safety reasons and a new structure is not planned at this time.

There were significant improvements made on the remaining (PAA) ball diamond.

- Diamond infield material, regrading, sod (funded by Pewaukee Kiwanis)
- LED light upgrades (funded by Pewaukee Youth Baseball)
- Underground wiring, transformer (Department)
- Two scoreboards were added (Pewaukee Youth Baseball)
- Diamond #2 backstop and infield fencing replace/repair (Department)

There has been no further development of the North end of the park.

The river walk bridge was not achieved.

### **Lead discussions to develop and build a future joint City/Village Community Center.**

- To be managed by the Joint Parks and Recreation Department.
- Provides access for community recreation programs and meetings.

### **Summary**

There has still been some interest and conversation regarding a future City/Village Community Center. There has not been any forward motion on this discussion.

# SECTION 3: Current Parks and Recreation Services

## PEWAUKEE PARKS

The City and Village of Pewaukee Parks & Recreation Department has experienced steady growth and development over time. Similar to other municipal park and recreation agencies, the Department functions through three primary components: recreation programming, capital planning and development, and park maintenance. Since the establishment of the Joint Parks & Recreation Department, these components have provided a comprehensive framework for the delivery of recreation services and the maintenance of community park facilities.

The Pewaukee area contains approximately 240 acres of parkland distributed across 17 sites, owned and maintained by either the City or the Village of Pewaukee. Additional park and open space areas are owned and managed by other public entities within the community. Map 1 identifies all existing park and open space sites located within the Pewaukee area.

The City of Pewaukee owns eight park sites comprising approximately 156 acres, while the Village of Pewaukee owns nine park sites comprising approximately 84 acres. The park system supports a broad range of recreational activities, including soccer, baseball, tennis, basketball, playground use, and passive recreation. In recent years, offerings have expanded to include inclusive play, beach swimming, pickleball, community events, fitness and enrichment programs, and outdoor education opportunities.

The park system is generally well maintained and continues to meet the community's recreational needs. However, many larger parks contain similar amenities, limiting diversity and differentiation across the system. Future planning should emphasize the development of distinct amenities and specialized facilities at individual parks to enhance variety, balance park usage, and respond to changing community recreation preferences.

### **Park Classification**

**Community Parks:** Parks of 10–50 acres serving up to a 15 mile service area. They are placed near major roads with easy access, and support intensive recreational opportunities for both passive and active uses.

**Neighborhood Parks:** Parks of 1–10 acres serving a 1 to 4 mile area and are in walking distance to the service area. Amenities are designed for localized needs and play areas for children.

**Mini Parks:** Parks in a small neighborhood up to 1 acre serving an area less than one mile. These generally include a playground for active use or remains as open space for passive use.

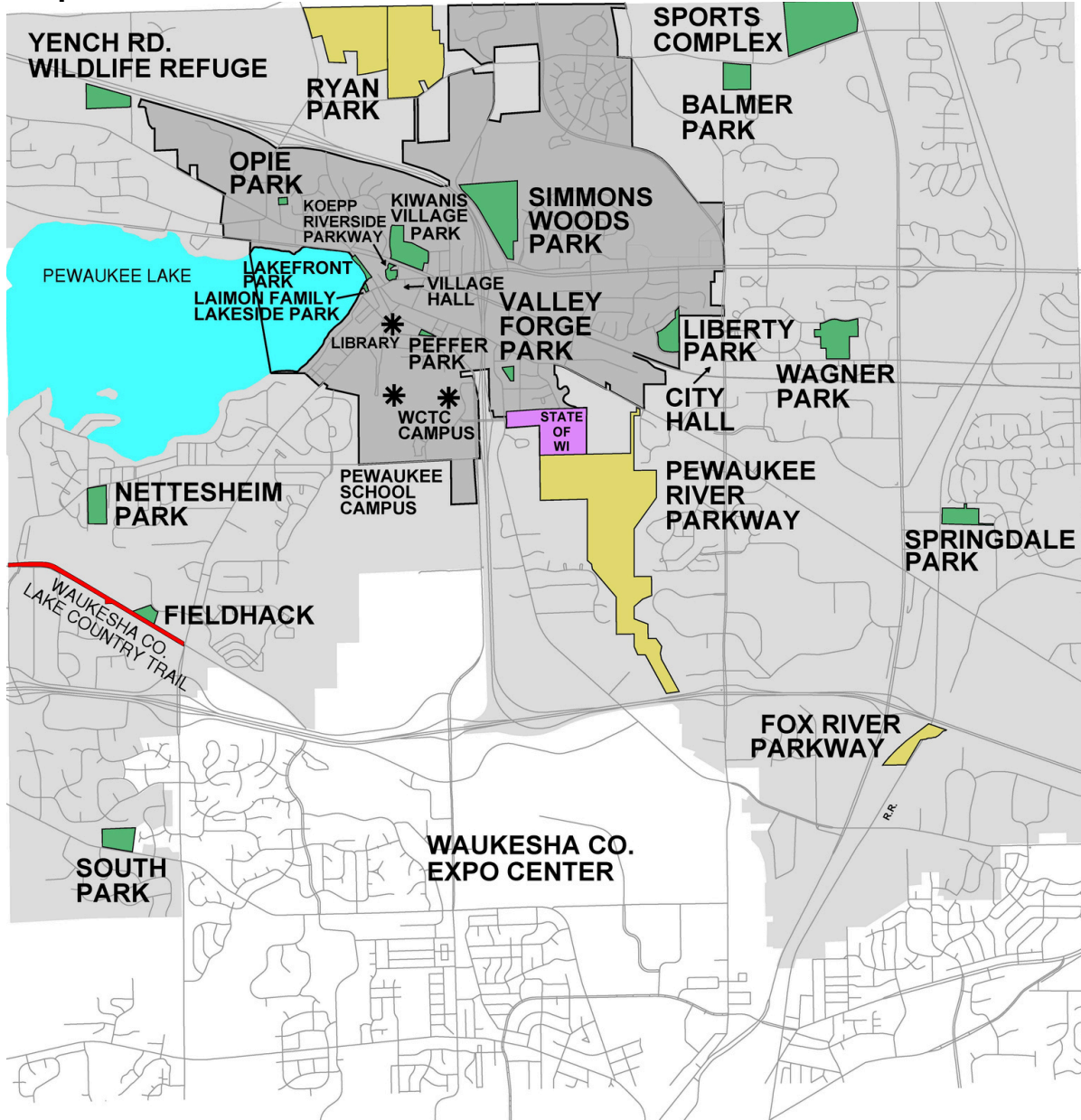
**Special Use Parks:** These parks do not have a specified service radius and are typically used for single purpose such as walking trails or a specific park amenity.

# SECTION 3: Current Parks and Recreation Services

## EXISTING PARK, RECREATION AND OPEN SPACE SITES

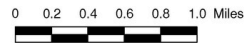
City and Village of Pewaukee, WI

Map 1



### Existing Park and Recreation Sites

- City or Village Park
- Lake Sanitary District Natural Areas
- Waukesha County
- State of Wisconsin
- \* Pewaukee School District Facilities



# SECTION 3: Current Parks and Recreation Services

Map 2

## PARKS MAP AND AMENITIES



		ADA Accessible	All-Inclusive Playground	Baseball Field	Basketball Court	Beach	Born Learning Trail	Building Rental	Kayak Launch	Nature Areas	Parking Spaces	Pickleball Court	Picnic Area	Playground	Portable Toilet	Programs	Public Boat Launch	Restrooms	Shelter	Soccer Field	Softball Fields	Splash Pad	Tennis Court	Volleyball Court
<b>City Parks</b>																								
<b>Balmer</b>	N44 W23875 Lindsay Rd.	✓	✓	✓	✓			✓			56	✓	✓	✓	✓	✓	✓	✓	✓	✓	✓	✓	✓	✓
<b>Nettesheim</b>	N26 W27495 Prospect Ave.	✓	✓	✓	✓		✓				55	✓	✓	✓	✓	✓	✓	✓	✓	✓	✓	✓	✓	✓
<b>Pewaukee Sports Complex</b>	N45 W23440 Lindsay Rd.	✓	✓	✓	✓						550	✓	✓	✓	✓	✓	✓	✓	✓	✓	✓	✓	✓	✓
<b>South</b>	N5 W27300 Northview Rd.	✓	✓	✓	✓						47	✓	✓	✓	✓	✓	✓	✓	✓	✓	✓	✓	✓	✓
<b>Springdale</b>	W226 N2400 Oakwood Ln.	✓	✓	✓	✓						0	✓	✓	✓	✓	✓	✓	✓	✓	✓	✓	✓	✓	✓
<b>Wagner</b>	N31 W23320 Green Rd.	✓	✓	✓	✓			✓			172	✓	✓	✓	✓	✓	✓	✓	✓	✓	✓	✓	✓	✓
<b>Village Parks</b>																								
<b>HJ Koepf Riverside Pkwy</b>	201 Oakton Ave.	✓							✓	✓	110													
<b>Kiwanis Village</b>	325 Capitol Dr.	✓		✓	✓					✓	100	✓	✓	✓	✓	✓	✓	✓	✓	✓	✓	✓	✓	✓
<b>Laimon Family Lakeside</b>	129 Park Ave.								✓		7					✓	✓	✓						
<b>Lakefront</b>	222 W. Wisconsin Ave.					✓					0	✓	✓				✓	✓						
<b>Liberty</b>	440 Concord Rd.			✓	✓						20	✓	✓	✓	✓					✓	✓	✓	✓	✓
<b>Opie</b>	450 West St.			✓	✓						0	✓	✓	✓	✓					✓	✓	✓	✓	✓
<b>Peffer</b>	330 Main St.			✓	✓						0	✓	✓	✓	✓									
<b>Simmons Woods</b>	889 Cecelia Dr.									✓	5	✓	✓	✓	✓	✓		✓						
<b>Valley Forge</b>	206 Morris St.			✓	✓						0	✓	✓	✓	✓			✓						

# SECTION 3: INDIVIDUAL PARK DETAILS - City

## Balmer Park

Park Location: City; Northeast

Park Size: 16 acres

Park Type: Neighborhood

The building and pavilion are available for rental May 1 - September 1

7 Picnic tables

Outdoor outlets

56 Parking spaces

Existing Facilities	Condition	Notes
Ball Diamond (1)	Good	Added Diamond Fence in 2025
Building	Average	
Pavilion	Average	
Playground	Good	Replaced 2024
Restrooms	Good	Not ADA-Compliant
Soccer	Good	
Tennis Courts	Poor	
Tennis Practice Wall	Average	
Volleyball (sand)	Good	



# SECTION 3: INDIVIDUAL PARK DETAILS-City

## Fieldhack; Nature Area

Park Location: City; Southwest

Park Size: 1 acre

Park Type: Open Space - not maintained for public use.



# SECTION 3: INDIVIDUAL PARK DETAILS-City

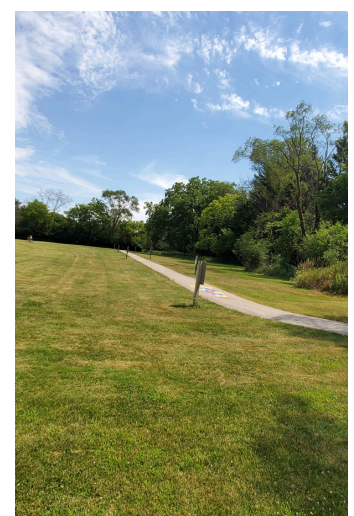
## Nettesheim Park

Park Location: City; West  
 Park Size: 12 acres  
 Park Type: Neighborhood

This building and pavilion are available for the public to rent year round.

- 11 Picnic tables
- Outdoor outlets
- 55 Parking spaces

Existing Facilities	Condition	Notes
Ball Diamond (2)	Good	Diamond 1 completely regraded, Diamond 2 repaired. Will consider complete regrading in 2026 in-house.
Basketball	Good	
Born Learning Trail	Good	
Building	Good	
Gaga Ball	Good	
Pavilion	Good	Outlets added 2022
Playground	Good	
Restrooms	Good	Bathroom Epoxy flooring in 2022, hand-dryer 2023
Tennis Courts	Poor	Considering repair/replace options
Volleyball (sand)	Good	



# SECTION 3: INDIVIDUAL PARK DETAILS-City

## Pewaukee Sports Complex Play Pewaukee All-Inclusive Playground Garrison's Splashpad

Park Location: City; Northeast

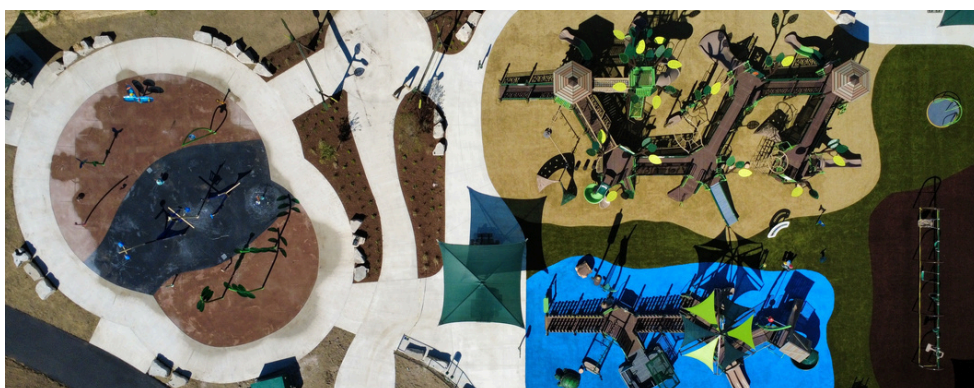
Park Size: 59 acres

Park Type: Special Interest

Ball diamonds are rentable early spring-late fall.  
Pavilions may be used for selling concessions with approval. Both ball diamonds and soccer fields are primarily utilized by community youth sports partners.

Group rentals are available for the playground & Splashpad.  
Both areas are 100% inclusive for those with disabilities.  
The Splashpad is open Memorial Day through Labor Day.

Existing Facilities	Condition	Notes
Concession Buildings (2)	Good	
Ball Diamonds	Good	Turf infields (2025)
Batting Cages (2)	Good	
Soccer Fields (13)	Average	Continued grading and improvements
All-Inclusive Playground	Good	2025 install
Garrison's Splash Pad	Good	2025 install
Asphalt Paths	Good	2025 install
Restrooms	Good	



# SECTION 3: INDIVIDUAL PARK DETAILS-City

## South Park

Park Location: City; Southwest  
 Park Size: 12 acres  
 Park Type: Neighborhood

The building and pavilion are available for the public to rent year round.  
 11 Picnic tables  
 Outdoor outlets  
 55 Parking spaces

Existing Facilities	Condition	Notes
Ball Diamond (2)	Average	Often floods
Basketball	Average	Located in parking lot
Building	Average	Bathroom Epoxy flooring 2023
Pavilion	Good	Outlets added 2022
Playground	Good	New structure and swings 2021
Restrooms	Good	New toilets, hand dryer 2023
Tennis Courts	Average	
Volleyball (sand)	Average	



# SECTION 3: INDIVIDUAL PARK DETAILS-City

## Springdale Park

Park Location: City; Southeast

Park Size: 12 acres

Park Type: Neighborhood

There is no parking lot for this park.

Existing Facilities	Condition	Notes
Ball Diamond	Average	Receives minimal use
Basketball	Good	
Building	Average	Used only for storage
Pavilion	Average	
Playground	Good	New equipment 2020, new main structure 2024
Restrooms	Average	
Tennis Court	Average	Has Pickleball lines (1 court, no nets)



# SECTION 3: INDIVIDUAL PARK DETAILS-City

## Wagner Park

Park Location: City; Central

Park Size: 26 acres

Park Type: Community

The park is available for the public to rent year round.

14 Picnic tables

Outdoor outlets

172 Parking spaces

Pickleball courts are open April - October

Courts are rentable by the hour

Existing Facilities	Condition	Notes
Ball Diamond (2)	Good	
Basketball	Good	
Building	Good	LED lighting conversion 2021
Flag Football	Good	Seasonal, shared green space
Gaga Ball	Average	
Pavilion	Good	
Playground	Good	New structure small kids area 2023, New structure and turf 2025
Restrooms	Good	Faucet sensors 2021, hand dryer 2023
Soccer	Good	Seasonal, shared green space
Pickleball courts	Good	
Volleyball (sand)	Poor	
Ponds (2)	Average	Solar Aerator (1)



# SECTION 3: INDIVIDUAL PARK DETAILS-City

## Yench Road; Undeveloped

Park Location: City; Northwest

Park Size: 18 acres

Park Type: Undeveloped Land, not maintained



# SECTION 3: INDIVIDUAL PARK DETAILS-Village

## HJ Koeppe River Parkway

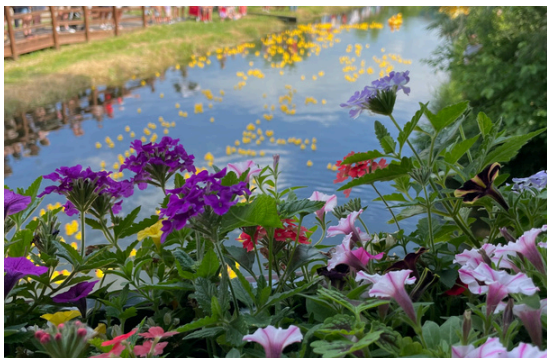
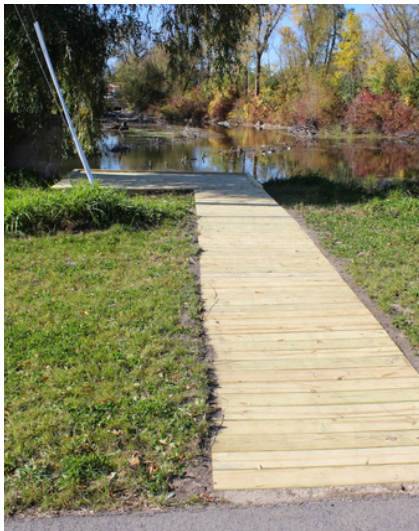
Park Location: Village; Central

Park Size: 2.84 acres

Park Type: Special Use

This park is the primary parking area for the beach, lakefront park, and downtown businesses.

Existing Facilities	Condition	Notes
Public Parking	Good	
Bridge Access to the lakefront	Good	Maintenance managed by volunteers
Sitting Benches/Passive Recreation Area	Good	
River	Good	Duck race; river maintenance by Pewaukee River Partnership



# SECTION 3: INDIVIDUAL PARK DETAILS-Village

## Kiwanis Village Park

Park Location: Village; Central

Park Size: 22 acres

Park Type: Community

The park is available for the public to rent May 1-September 30

10 Picnic Tables

Outdoor outlets

100+ Parking Spaces

Existing Facilities	Condition	Notes
Ball Diamond (2) One lit diamond	Good	Significant renovations were done in 2022 on both ball diamonds
Basketball	Good	New drain area, new asphalt
Bell Tower Memorial	Good	This addition installed in 2025 by the Bell Tower Memorial organization.
Gaga Ball	Average	
Pavilion (2)	Average	
Playground	Good	New in 2025, with additional Inclusive elements
Pond	Good	New fountain 2024
Restrooms	Good	Epoxy floor 2021
Tennis Court	Average	
Volleyball (sand)	Good	



# SECTION 3: INDIVIDUAL PARK DETAILS-Village

## Laimon Family Lakeside Park

Park Location: Village; Central  
 Park Size: 0.59 acres  
 Park Type: Special Use

Existing Facilities	Condition	Notes
Boat Slip Rental	Good	There is a long waitlist for slip rentals
Boat and Bait Shop Business	Good	This is a private business that rents the building
Personal Residence	Average	The upper of the building is a rentable residence.
Pewaukee Lake Gasoline Sales	Good	
Public Boat Launch	Good	
Public Parking	Good	This is a small parking lot, most boat launchers park at Koeppe Park parking area.
Restrooms	Good	Hand dryer 2024



# SECTION 3: INDIVIDUAL PARK DETAILS-Village

## Lakefront Park

Park Location: Village; Central  
 Park Size: 1 acre  
 Park Type: Special Use

Building concessions area is rented by groups for special events such as the Kiwanis Beach Party, and Waterfront Wednesdays.

Existing Facilities	Condition	Notes
Beach	Good	Is tested weekly in the summer for water bacteria levels. Beach does not have lifeguards.
Building/Concessions	Average	Epoxy floor 2021, LED lighting conversion 2025
Fishing Pier	Good	New pier in 2023
Passive Recreation Area	Good	Benches are available through the park
Pavilion	Good	LED lighting conversion 2025
Restrooms	Good	
Transient Boat Slips	Good	



# SECTION 3: INDIVIDUAL PARK DETAILS-Village

## Liberty Park

Park Location: Village; East

Park Size: 9 acres

Park Type: Neighborhood

Existing Facilities	Condition	Notes
Ball Diamond	Good	New fence 2020
Basketball	Good	
Playground	Good	
Portable Toilet	n/a	Not available in winter
Tennis Court	Average	

Large hill is used for sledding in winter.



# SECTION 3: INDIVIDUAL PARK DETAILS-Village

## Opie Park

Park Location: Village; Northwest  
 Park Size: 1 acre  
 Park Type: Mini Park

Existing Facilities	Condition	Note
Basketball	Good	
Playground	Good	New structure 2021
Portable Toilet	n/a	Not available in winter

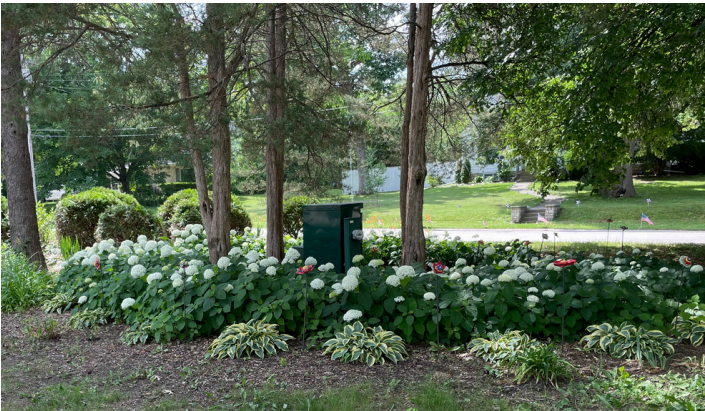


# SECTION 3: INDIVIDUAL PARK DETAILS-Village

## Peffer Park

Park Location: Village; Southeast  
 Park Size: 1 acre  
 Park Type: Mini Park

Existing Facilities	Condition	Notes
Passive Recreation Area	Good	Benches near flower garden area
Playground	Good	New spinner 2021, new structure 2023



# SECTION 3: INDIVIDUAL PARK DETAILS-Village

## Simmons Woods

Park Location: Village; East  
 Park Size: 48 acres  
 Park Type: Special Use

Existing Facilities	Condition	Notes
Apple Orchard	Good	Trees are not treated with insecticide
Boardwalk	Average	Areas of the boardwalk need repair/replacement
Passive Recreation Area	Average	Some benches need repair/replacement
Trail System	Average	Currently seeking funding for new trail markers. Invasive species of buckthorn has grown significantly in this park; Significant volunteer labor for buckthorn removal



# SECTION 3: INDIVIDUAL PARK DETAILS-Village

## Valley Forge Park

Park Location: Village; Northwest

Park Size: 2 acres

Park Type: Neighborhood

The park is located in a neighborhood of multi-family housing and does not have a public parking lot.

Existing Facilities	Condition	Notes
Ball Diamond	Average	
Basketball	Poor	Located in parking lot/turnaround area
Gaga Ball	Good	
Pavilion	Good	
Playground	Average	
Portable Toilet	n/a	Not available in Winter



# SECTION 3: Indoor facilities

The Department currently does not operate an indoor facility other than the park buildings which house the majority of recreation program offerings, summer day camp and community rentals.

Lakefront Park has a concession stand that is currently rented out on an annual basis to Positively Pewaukee for their Waterfront Wednesday events in the summer.

The Pewaukee Sports Complex has two concession stands that are utilized by youth sports organizations and the Department.

## **Public School Facilities**

Department partners with the Pewaukee School District for use of school facilities for SPARK, a Summer School wrap-around camp, serving up to 100 children at no charge.

## **Church Space**

The Department partners with local Pewaukee churches for program space at a nominal rental charge. Church partners include: Spring Creek Church, Christ Lutheran Church and St. Bartholomew's Church.

## **Other Indoor Space**

The Department also has utilized local businesses/community partners that have space available for programs, events, and meetings.

**As the community grows, there will be a need for additional indoor facility space.**

# SECTION 3: Parks and Recreation Programming

## Pewaukee Parks and Recreation Programs

The combined communities of Pewaukee have a residential population of 24,667 residents (U.S. Census estimate in July 2024) and is comprised of both new and established housing categories. The cornerstone of any park and recreation agency are the program offerings. The purpose of completing a Recreation Demand Analysis is to evaluate recreational offerings and how local trends and offerings by neighboring communities impact participation. If a customer's needs are not met, they will seek it elsewhere. Part of this process was to survey local recreation agencies to compare recreation structure, organization, and offerings. This analysis indicates that compared to other communities, Pewaukee's per capita taxpayer cost is conservative.

**TABLE: 3.1**

Rereation Demand Analysis	Pewaukee	Waukesha Parks, Rec & Forestry	Brookfield	Sussex
	City/Village	City	Town	Village
Number of residents	24,667	71,461	6,468	12,607
Indoor facilities (Comm. Center)	0	4	0	3
Number of parks	15	51	3	22
Park acreage in system	240	1,196	47	592
Number of recreational programs*	575	1,648	20	957
**Number of leagues using parks	6	53	2	8
Number full-time recreation staff	3	9	1	4
Number full-time parks staff	4	28	0	5
Annual total budget	\$1,850,000	\$7,362,230	\$208,000	\$2,759,408
Park expenditures per person	\$75.00	\$103.00	\$32.00	\$219.00

\*Total number offerings/multiple sessions

\*\* Number does not include tournament play at the sports complex.

# SECTION 3: Parks and Recreation Programming

## Pewaukee Parks and Recreation Programs (Cont.)

The data in Table 3.1 provides an interesting comparison to the way parks and recreation agencies operate. In regard to program offerings, Pewaukee does offer more programs than one of the four departments; the Village of Sussex has a strong senior program therefore many of their programs stem from that category.

A few interesting points to consider when looking at the recreational offerings is the lack of indoor space owned and operated by the Department. Although Wagner, Nettlesheim and South Parks offer an indoor building that can be used for small classes, they are limited not only by space but also by what type of programs can be offered.

Below is an inventory of Pewaukee's programs for the past year by program category. This chart only counts the number of different programs, not individual sessions of each program.

**TABLE 3.2**

Program Category	2021	2022	2023	2024	2025
Preschool Ages 0-4	16	20	25	29	31
Youth Ages 5-17	47	62	69	64	68
Adult Ages 18+	36	34	30	39	68
Seniors Ages 60+	37	37	31	33	39
Community Events	15	14	12	12	13
Adult Trips	3	12	14	3	5

### NOTES:

In 2020, the COVID-19 pandemic had a significant effect on program attendance which spanned through the first portion of 2021. Program offerings were still somewhat limited.

The increase or decrease in specific program areas by year is not indicative of the total number of participants in a program category. Programs are routinely reviewed and registration trends are used to determine which program areas have the most success and which may need to be removed or replaced.

# SECTION 3: Parks and Recreation Programming

## Marketing and Promotion of Recreational Programs

### Activity Guide

The Pewaukee Parks and Recreation Activity Guide is printed and distributed three times per year— Winter/Spring, Summer, and Fall—and mailed to every household in both the City and Village. Based on the 2025 Open Space Plan survey, 91.5% of respondents identified the seasonal guide as the primary way they learn about recreation programs and department services.

### Social Media

The Department hosts a public Facebook page as another method of reaching the community. This outlet is used for general information, promotion of classes and services, and events. The page currently has 4.4K followers.

### Follower Breakdown

52.7% - Pewaukee

17.2% - Waukesha

6.5% - Hartland

5% - Sussex

4% Milwaukee

3.9% Brookfield

### Printed School Flyers

Three to four times per year the Department creates a school flyer to promote specific classes or programs to students ages 4K-6<sup>th</sup> grades. We create, provide, and print these flyers and the school distributes them to each classroom.

### Email

Through recreation software, access to prior participant emails is another option for marketing important information to users. This is generally done to announce the upcoming activity guide and registration dates, or to contact specific demographics for a program or event.

### Print Media

For some events, large print media like banners and yard signs are created and shared throughout the community.

### Cross Promotion

Some programs gain traction from participants returning for another session or similar program, by word-of-mouth, or by instructors sharing details with current students.

# SECTION 3: Parks and Recreation Programming

## Recreation Program Design and Implementation

### Program Design Methodology

The Pewaukee Parks & Recreation Department utilizes a comprehensive and strategic approach to the development of recreational programs that reflects both community priorities and professional standards in the field of parks and recreation. Program planning direction is created through a combination of local interest, national trends, participant requests, instructor availability, program evaluation data, and alignment with the adopted Parks and Open Space Plan.

Local interests are assessed through ongoing community engagement, participation patterns, and demographic analysis to ensure that offerings remain responsive to the diverse needs and preferences of residents. National recreation and leisure trends are reviewed to incorporate best practices and emerging program models that promote innovation, wellness, and inclusivity within the community. Participant feedback, gathered through surveys and evaluations, provides valuable insight into program satisfaction, demand, and opportunities for enhancement.

The Department also evaluates the availability and qualifications of instructors to maintain high program standards and ensure the delivery of safe, effective, and engaging recreational experiences. All program decisions are ultimately guided by the goals and directives established within the Parks and Open Space Plan, ensuring consistency with the Department's long-term objectives related to recreation, community enrichment, and the stewardship of public spaces.

Through this integrated and evidence-based planning framework, the Pewaukee Parks and Recreation Department strives to provide a balanced, innovative, and accessible array of recreational opportunities that contribute to the overall quality of life in the Pewaukee community.

### Program Evaluation

Recreational programs are routinely monitored for participant satisfaction through anonymous surveys. At the end of each class a survey is sent to participants and data collected from that feedback is used to implement improvements or changes.

Program feedback also comes from participants. This information is often received on the phone, email, or in-person. All feedback is taken as a method to provide for the recreational needs of community and in an effort for continuous improvement.

# SECTION 3: Parks and Recreation Programming

## Community Recreation Services

The Pewaukee community offers a variety of youth sports programs outside of the Parks and Recreation Department. Most of these groups are private non-profit and are volunteer run and managed. This information is of note because the size of the Pewaukee community does not support duplication of services. The Department offers only preschool-aged sports to provide basic sports concepts to youth prior to the age they are eligible to participate in local youth sport programs.

### Youth Sports Organizations

- Pewaukee Youth Baseball
- Pewaukee Youth Basketball
- Pewaukee Youth Tackle Football
- Lake Country Football Club (Soccer)
- Pewaukee Predators Softball

A variety of other youth and family program providers also serve the Pewaukee community. Unlike youth sports, some of these services are duplicated within and outside the Department.

### Local Recreation Providers (not a complete list):

- J.K. Lee Tai Kwon Do
- Karate America
- Aspire Dance Studio
- Accent on Dance Studio
- Fred Astaire Dance Studio
- Blue Rose Dance Studio
- We Rock the Spectrum
- The Sensory Club
- Pewaukee Public Library
- Pewaukee School District
- Planned development of a new YMCA facility.

### Civic Organizations

Pewaukee has many local organizations that have been good stewards of the Pewaukee Parks and Recreation Department's initiatives and community engagement.

### Local Civic Organization (not a complete list):

- Pewaukee Kiwanis Club
- Pewaukee Women's Club
- Pewaukee Area Arts Council
- Pewaukee Historical Society
- Pewaukee River Partnership
- Positively Pewaukee
- American Legion Post #71 and VFW
- Bell Tower Memorial
- Pewaukee Food Pantry
- Pewaukee Lake Waterski Club
- Waukesha Pewaukee Convention & Visitor's Bureau

# SECTION 3: Parks and Recreation Programming

## Future Parks and Outdoor Spaces

The Pewaukee Parks and Recreation Department approaches park planning, development, and maintenance through a comprehensive and strategic framework that aligns with both community needs and the goals established in the Parks and Open Space Plan.

Decisions regarding park improvements, acquisitions, and amenities are guided by data, public input, and adherence to professional park planning standards. The Department regularly evaluates local demand, demographic trends, and usage patterns to ensure that existing park sites and new development projects effectively serve the evolving needs of residents.

Community feedback, obtained through surveys, public meetings, and stakeholder engagement, provides valuable insight into priorities related to accessibility, environmental stewardship, recreation, and aesthetics.

Best practices and national standards in park design, safety, and sustainability are reviewed to ensure that all projects incorporate contemporary approaches to recreation and resource management. Coordination with other municipal departments, regional planning agencies, and community partners further supports efficient use of resources and alignment with broader community development objectives.

Each initiative is developed in accordance with the directives of the Parks and Open Space Plan, ensuring that investments in park infrastructure, open space preservation, and recreational facilities contribute meaningfully to the City and Village's shared vision for a vibrant, connected, and sustainable parks system.

Through this deliberate and evidence-based process, the Pewaukee Parks & Recreation Department seeks to enhance the quality, accessibility, and long-term resilience of Pewaukee's park system for current and future generations.

# SECTION 4: Community Interest Survey

## Community Interest Survey

In 2025, the Pewaukee Parks and Recreation Department conducted a comprehensive Community Interest Survey to gather feedback from residents regarding parks, facilities, programs, and overall departmental services. The survey provided valuable data on community satisfaction, priorities, and emerging needs, offering a clear understanding of how residents perceive current offerings and where future enhancements may be most beneficial.

The survey was designed based on evaluation of the 2021-2025 goals, updated department initiatives since the last Open Space Plan, and to gather specific data to drive the future of the Department.

Unlike previous surveys, this one was not mailed directly to homes. The survey was available as a QR scannable code on the front of the 2025 Summer Activity Guide, and also on the Parks and Recreation website. There was an additional option to contact the office for a mailed hard-copy of the survey. This method gave equal access to all Pewaukee households instead of a random sample. This method was also cost-free, and more environmentally friendly by removing the need to purchase and copy paper surveys, pay postage, and provide pre-addressed stamped return envelopes.

This survey resulted in 836 responses. There is not a specific measurable response rate because the process did not establish a quantity of surveys requested.

The survey can be found in Appendix C.

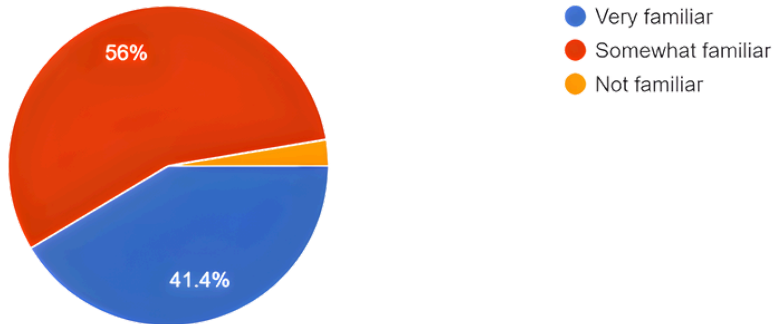
# SECTION 4: COMMUNITY INTEREST SURVEY

## Interest Survey Results

### QUESTION 1:

How familiar are you with Pewaukee Parks and Recreation Department and its services?

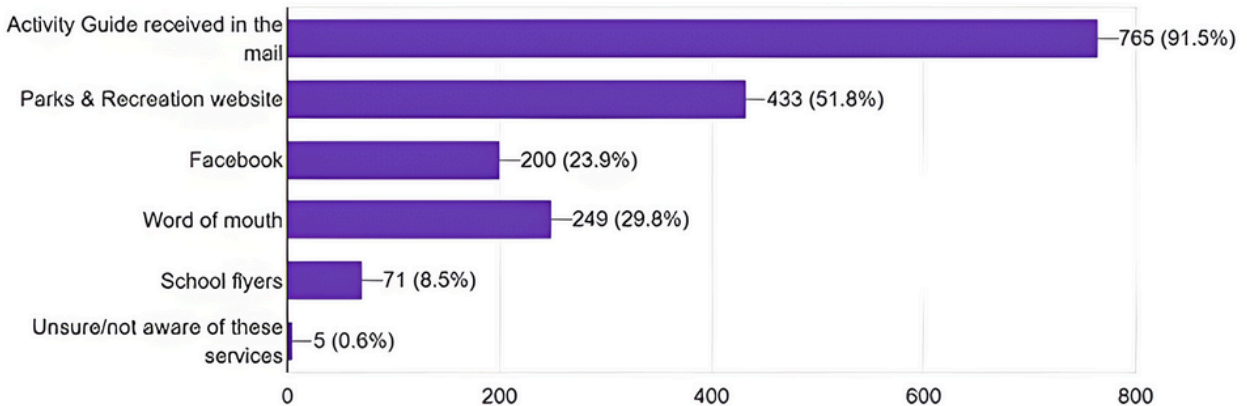
836 responses



### QUESTION 2:

Where do you get information about Pewaukee Parks and Recreation? Choose all that apply.

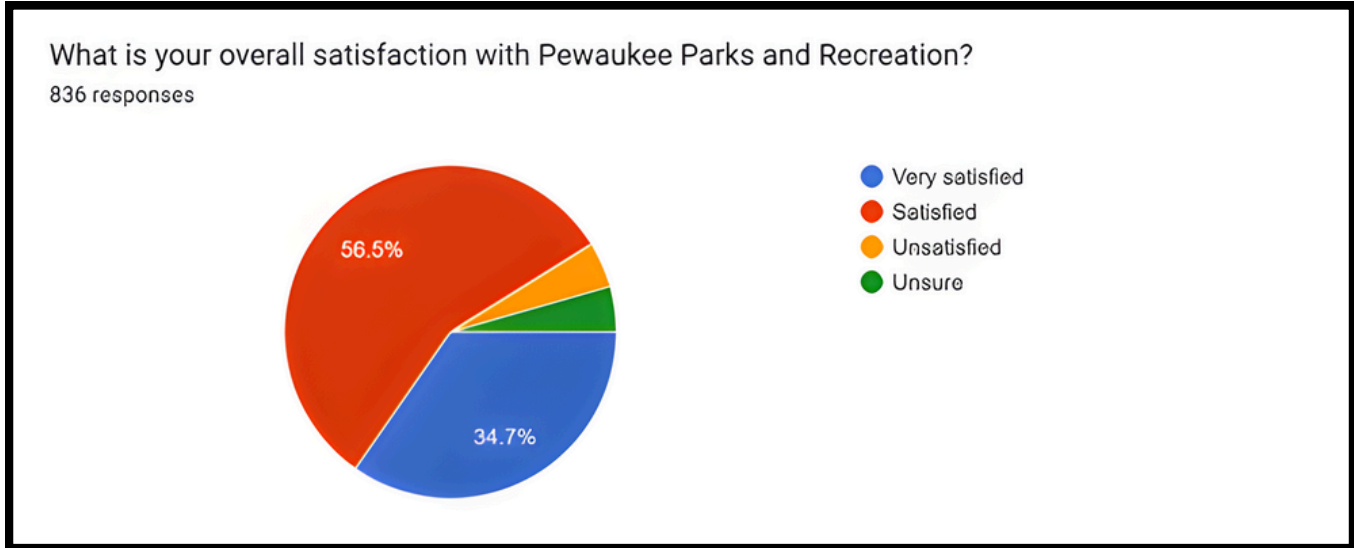
836 responses



# SECTION 4: Community Interest Survey

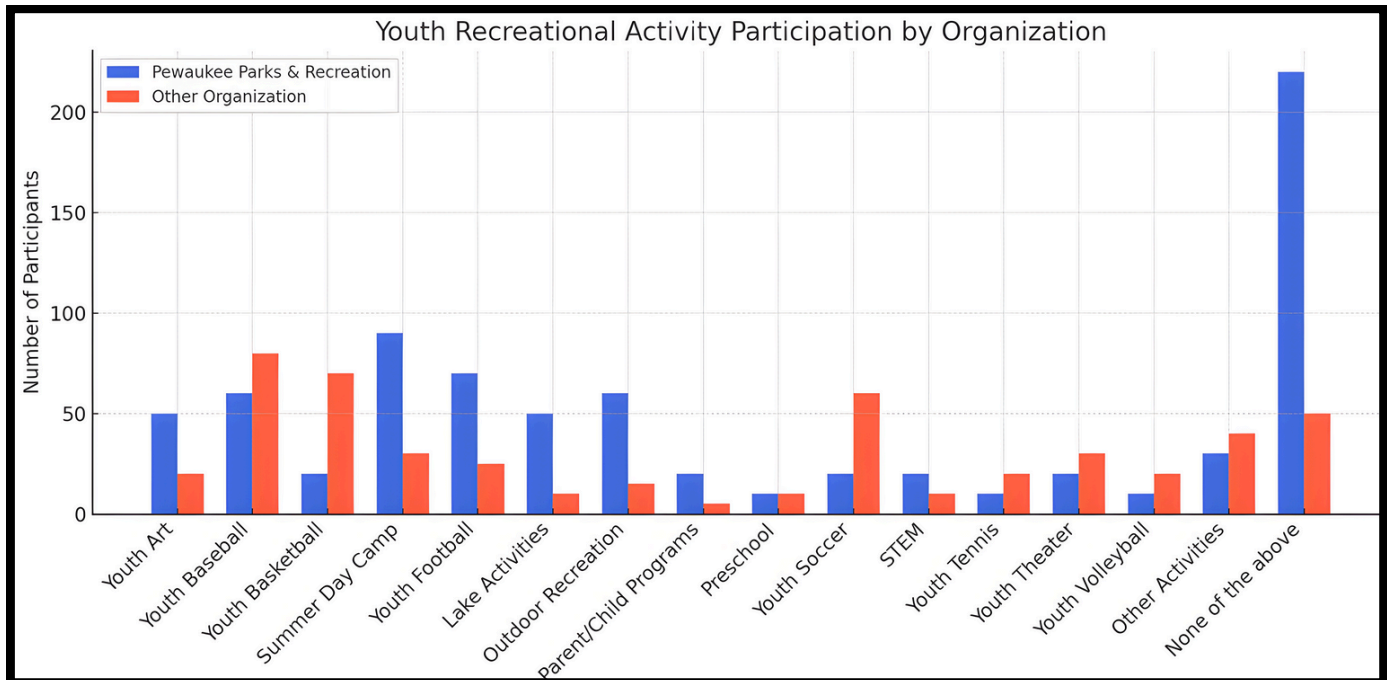
## Interest Survey Results (Cont.).

### QUESTION 3:



### QUESTION 4:

What YOUTH recreational activities do the individuals in your household participate in? Check the column you participate in, leave it blank if you do not participate.

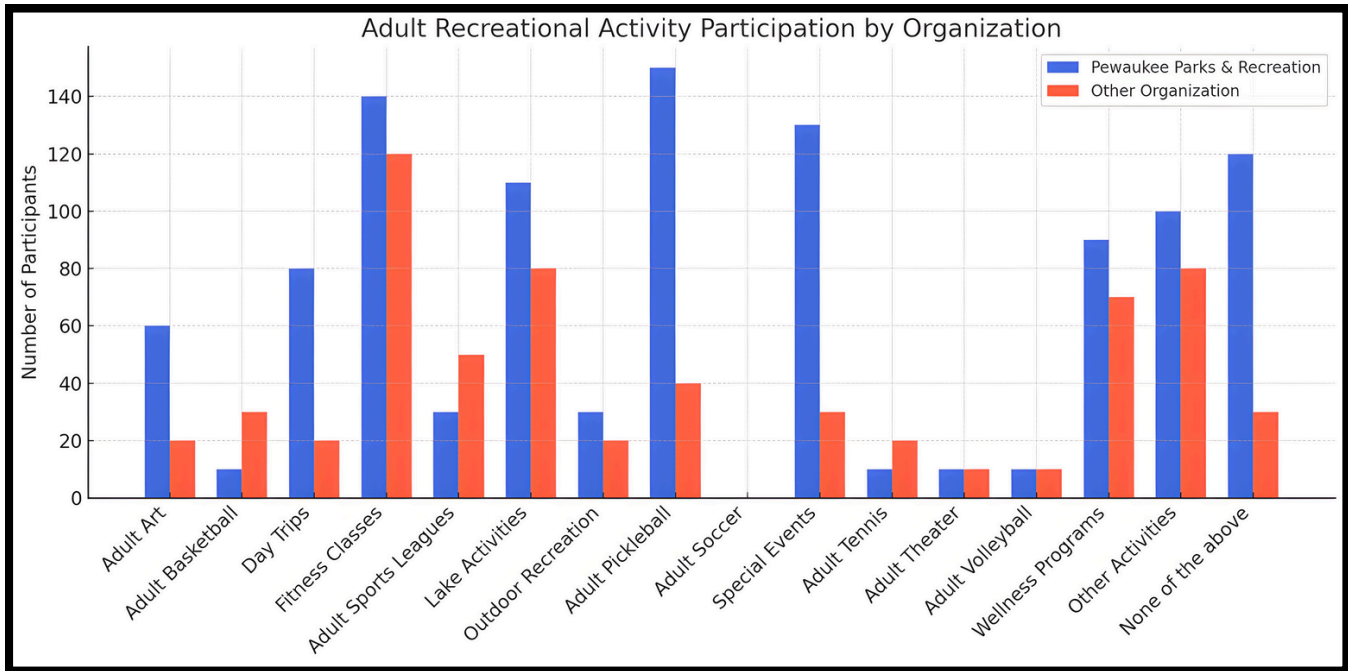


# SECTION 4: COMMUNITY INTEREST SURVEY

## Interest Survey Results (Cont.)

### QUESTION 5:

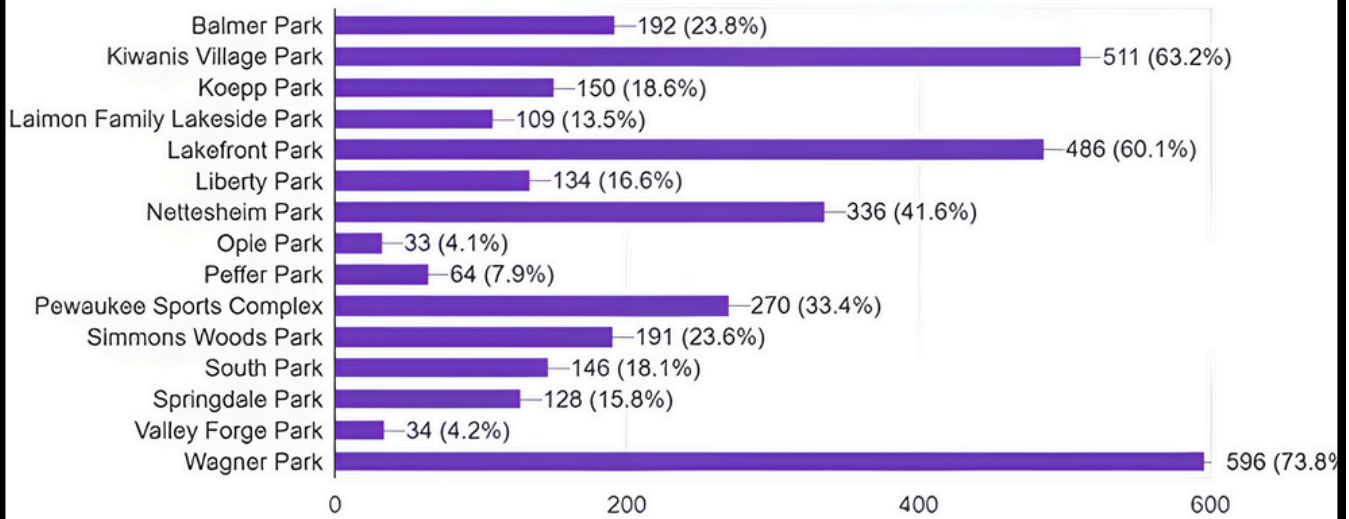
What ADULT recreational activities do the individuals in your household participate in? Check the column you participate in, leave it blank if you do not participate.



### QUESTION 6:

Which of the following parks have you or other members of your household visited in the past year?  
(Please check all that apply)

808 responses

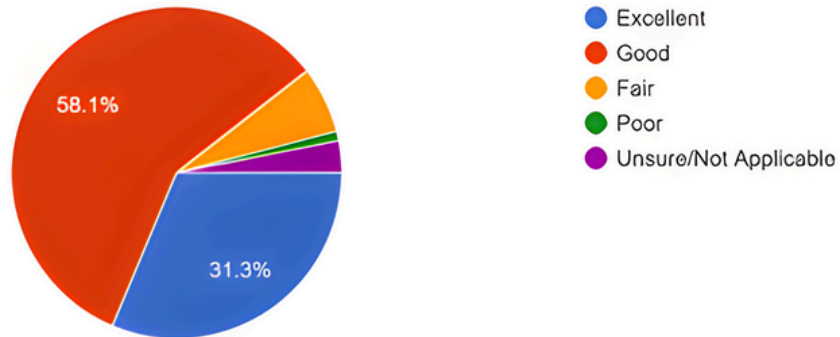


# SECTION 4: COMMUNITY INTEREST SURVEY

## Interest Survey Results (Cont.)

### QUESTION 7:

Overall, how would you or other members of your household rate the conditions of Pewaukee parks?  
836 responses



### QUESTION 8:

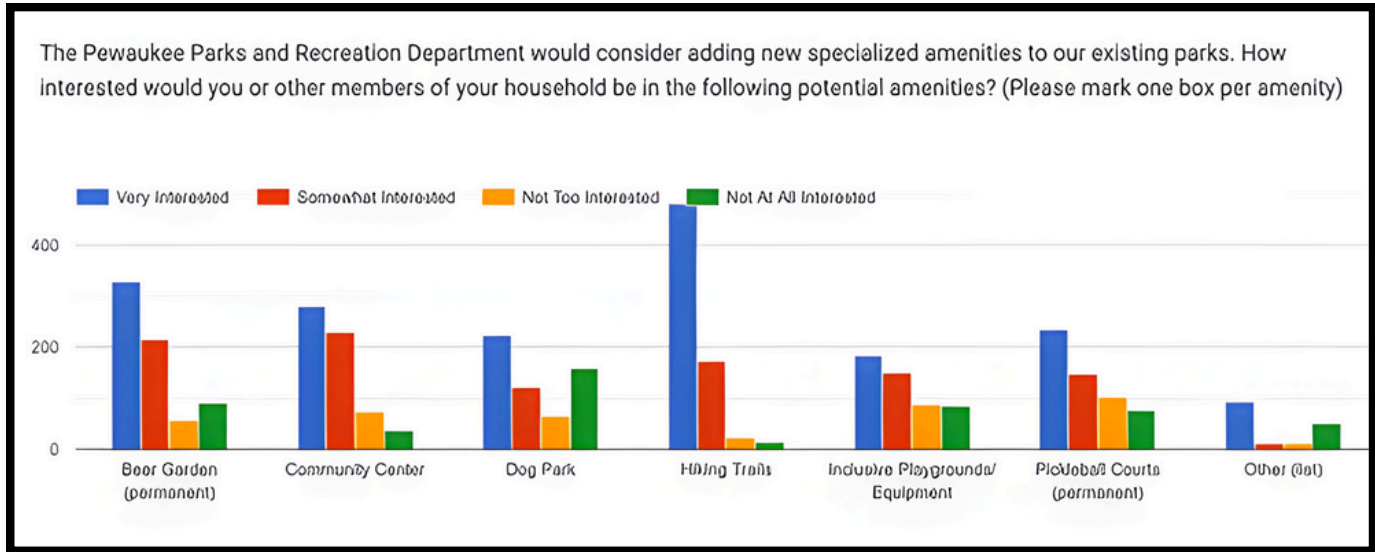
What types of expansion would you like to have done to the current park system?  
779 responses



# SECTION 4: COMMUNITY INTEREST SURVEY

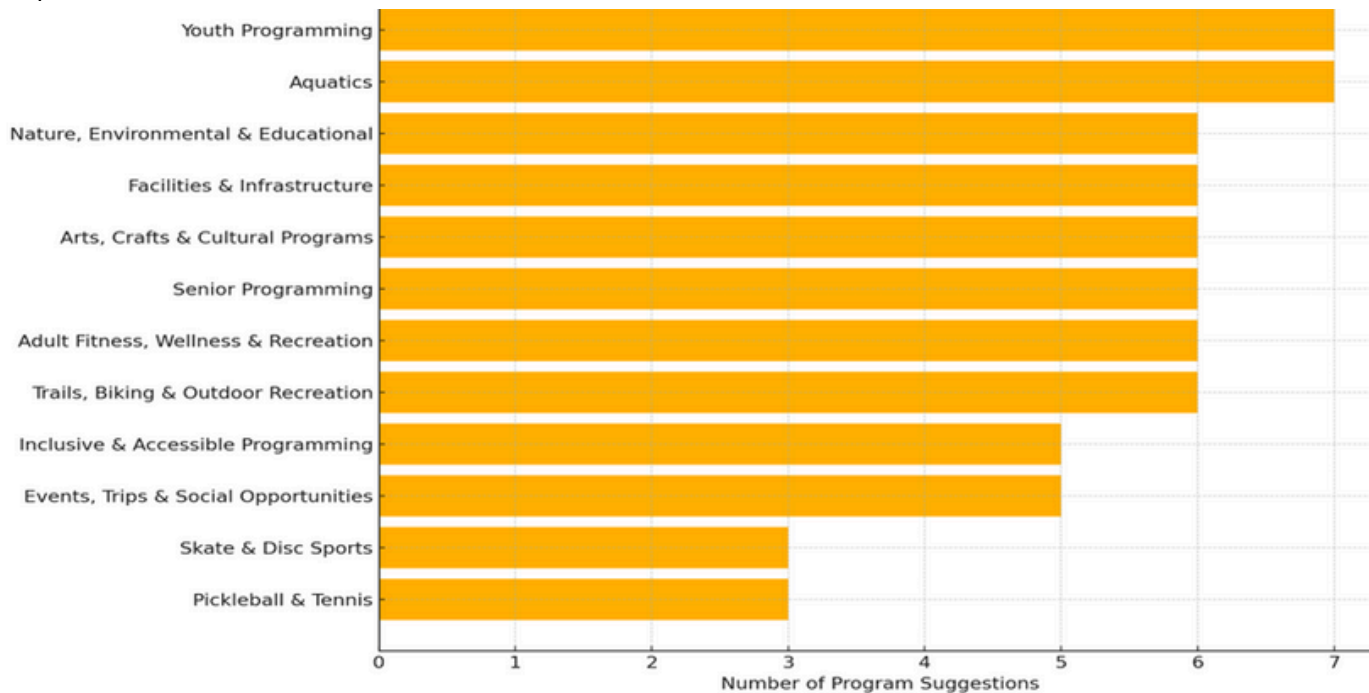
## Interest Survey Results (Cont.)

### QUESTION 9:



### QUESTION 10:

What additional areas of programming would you like the Pewaukee Parks and Recreation Department to offer?



Responses to this open-ended question varied widely. The graph below illustrates the major program themes that emerged. A detailed listing of all participant suggestions is included in Appendix D.

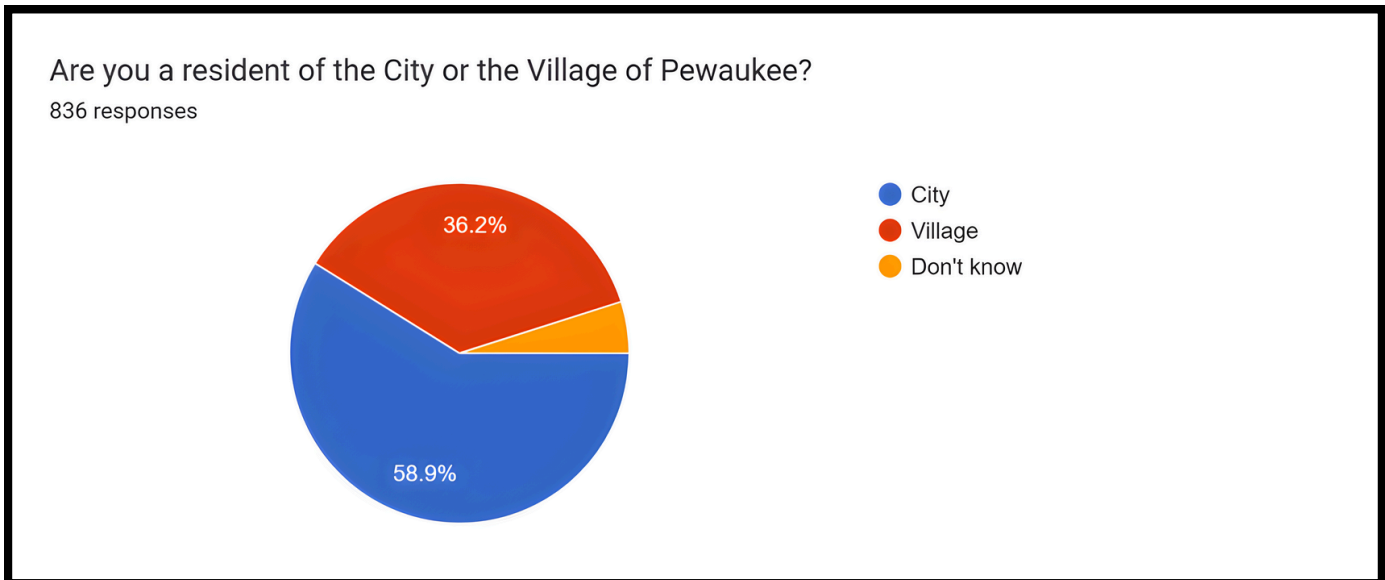
# SECTION 4: COMMUNITY INTEREST SURVEY

## Interest Survey Results (Cont.).

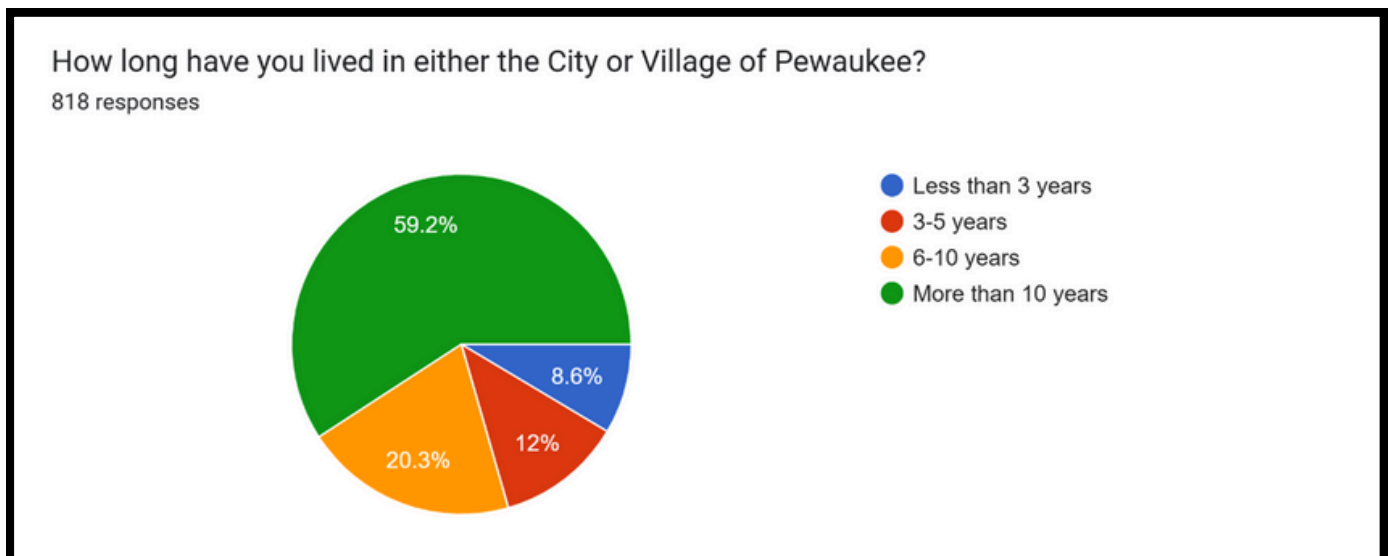
### QUESTION 11:

Number 11 in the survey was not formatted as a question. It referenced the Friends of the Parks of Pewaukee non-profit group and the support that is provided by them for the Department. It gave an email link for those respondents that would like to get involved in the group, or make a donation.

### QUESTION 12:



### QUESTION 13:



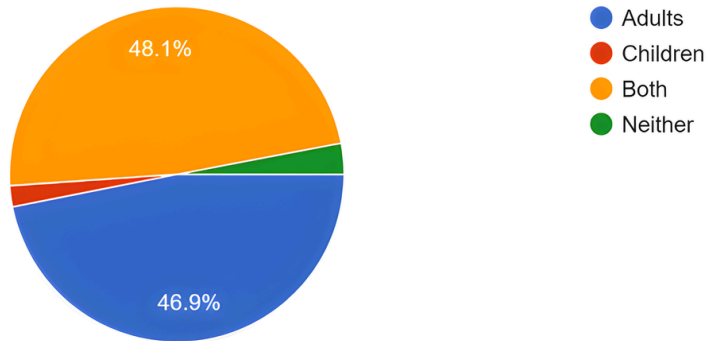
# SECTION 4: COMMUNITY INTEREST SURVEY

## Interest Survey Results (Cont.)

### QUESTION 14:

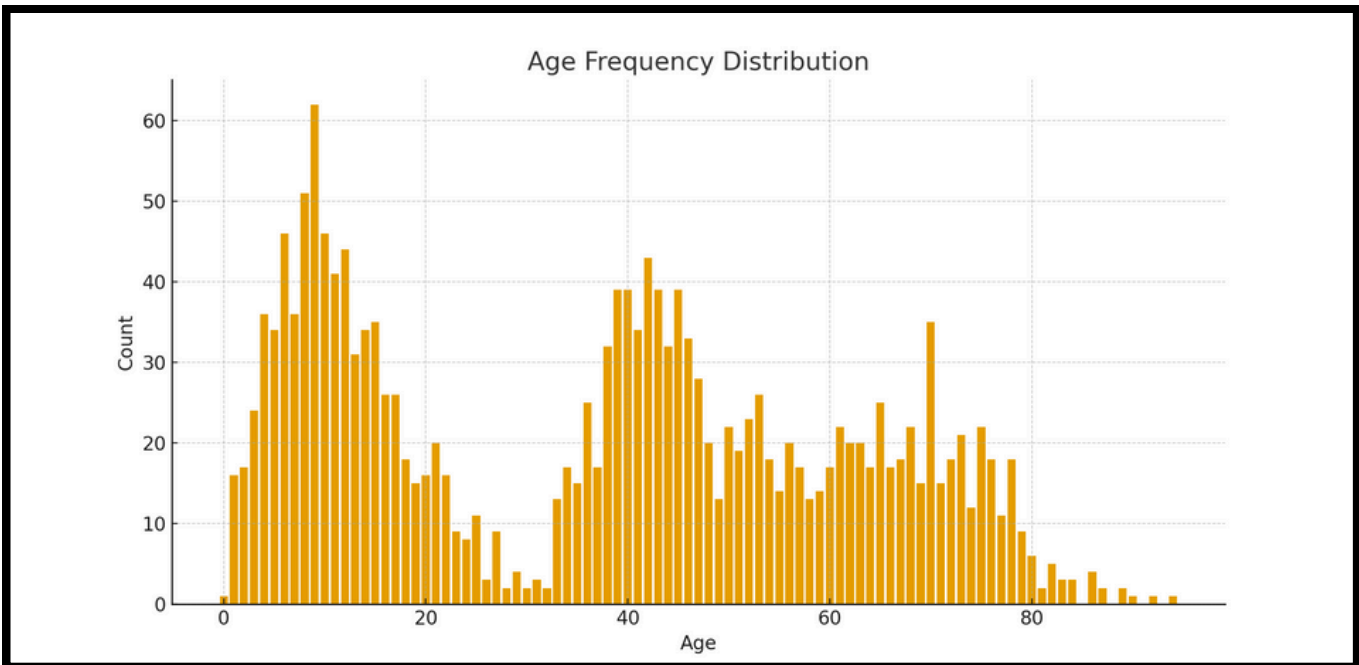
What members of your household visited or used Pewaukee parks within the last year?

836 responses



### QUESTION 15:

This question asked respondents to list the ages of all the members in the household.



### QUESTION 16:

This question asked respondents to share any additional comments.

This feedback can be found in Appendix E.

# SECTION 5: Parks and Open Place Goals 2026-2030

## SURVEY FINDINGS DISCUSSION

After compiling results from the survey, the Joint Parks and Recreation Board was given the opportunity to review findings and give feedback. This feedback in addition to staff evaluation of the data, formed the framework for the following 2026-2030 goals.

## Administrative Goals

### **Continue to grow alternative revenue sources to help offset departmental expenses.**

#### **Objectives:**

1. Continue to find ways to connect alternative dollars to existing projects.
2. Identify mission alignment with community businesses.
3. Identify grant funding sources.
4. Sale of naming rights, banners, ads, etc.

#### **Potential Funding/Execution:**

- Consistently develop and update the partnership/sponsorship document for businesses to become/stay involved when aligned with Department's service mission.
- Create an on-going list of items that may be donated as in-kind products to offset supply needs for parks projects or recreational programming.
- There may be additional unique opportunities to be determined.

### **Evaluate and determine the best process forward for tennis/other courts and utilization of space.**

#### **Objectives:**

1. Consider court crack filling, replacement, or removal of tennis/other courts.
2. Determine level of use of courts at different park locations.
3. Determine the need or interest for courts at different park locations.

#### **Potential Funding/Execution:**

- Capital replacement plan to be established.
- USTA matching grants.

# SECTION 5: Parks and Open Place Goals 2026-2030

## 2026-2030 Administrative Goals (Cont.)

**Investigate and determine best utilization of space at the Yench Road park site for possible development.**

### **Objectives:**

1. Review site for previous use and potential unexpected outcomes or opportunities.
2. Consider potential use and recreation opportunities this site would be best suited for.

### **Potential Funding/Execution:**

- Brownfield grants
- Outdoor recreation grants
- Environmental grants

# SECTION 5: Parks and Open Place Goals 2026-2030

## **Recreation Goals**

**Construct a multi-purpose, inclusive community center facility that provides space for expanded recreational activities, social interaction, and additional rental opportunities for events.**

### **Objectives:**

1. Determine the most opportunistic uses for the facility when considering the buildout and requirements.
2. Utilize community feedback, trends, Board, and staff input to determine amenities offered at the facility.
3. Review similar local facilities to determine if there is a duplication of services (New YMCA on WCTC campus).

### **Potential Funding Sources:**

- Public: Grant funding.
- Public/private joint-ventures with youth sports organizations or other community groups.
- Referendum.

**Determine the most efficient and cost effective management of field tasks and park improvement.**

### **Objectives:**

1. Review existing processes for maintenance tasks to determine what is needed to perform certain tasks.
2. Consider options for doing more processes in-house or hiring contracted services for better use of staff time and resources (example: baseball diamond renovations).
3. Find alternative investments that will decrease labor and supply costs (example: installation of concrete dugout surfaces).

### **Potential Funding/Execution:**

- Identify, consider, and evaluate previous and new processes as it relates to the budget.
- Consider cooperative projects with other departments such as DPW/Streets.
- Consider partnership with other local communities for cost sharing.

# SECTION 5: Parks and Open Place Goals 2026-2030

## 2026-2030 Recreation Goals (Cont.)

### **Enhance recreational program opportunities based on feedback and changing demographics in our community.**

#### **Objectives:**

1. Review census statistics and demographic data to determine which program areas to reduce, grow, or adjust.
  - a. Nature/outdoor activities - opportunity to offer 12-month outdoor programming such as lake activities, winter activities.
  - b. Teen/Tween programming - engage teens/tweens through opportunities such as volunteering in outdoor park spaces, assisting instructors for classes, helping with special projects, etc.
  - c. Intergenerational programming - Approach and coordinate with senior living communities for programs that utilize their facilities. Examples include dance recitals, craft activities, chess, games, cooking, etc. Courses would be run by recreation staff. Additional opportunity for senior community partnerships to provide transportation to our park spaces

#### **Potential Funding/Execution**

- Public: DNR Grants, Federal Grants (specific to outdoor recreation)
- Create a volunteer management database with initiative and partnership with Friends of the Parks of Pewaukee, Pewaukee School District, local businesses, churches and organizations.
- Building relationships with local senior communities.

\*Staff time and resources would be necessary for increased programming.

# SECTION 5: Parks and Open Place Goals 2026-2030

## **Parks Maintenance Goals**

**Expand the network of trails and multi-use paths to provide safe, accessible, and sustainable walking and hiking opportunities for all ages.**

### **Objectives:**

1. Identify park locations that would best serve the community.
2. Determine trail types that would best fit the park locations.
3. Look into development options that are sustainable and low maintenance.

### **Potential Funding Sources:**

- Public: DNR, Community Block Grants, Federal Grants.
- Private: Local business sponsorships, individual memorial donations, Friends of the Parks, Capital Campaign/Crowdfunding.
- Other: In-kind donations of supplies, utilization of WCTC trades program students, volunteer labor.

**Maintain and prolong lifespan of new existing amenities including multiple new playgrounds, Garrison's Splash Pad, and synthetic turf baseball fields.**

### **Objectives:**

1. Research and obtain data to determine the most effective and efficient maintenance plans for new amenities.

### **Funding/Execution:**

- Utilize operational expense budget, along with expanding the City's Capital Replacement Plan to build a fund balance for purchasing replacement items when amenities meet their useable safe lifespan.

# SECTION 5: Parks and Open Place Goals 2026-2030

## 2026-2030 Parks Maintenance Goals (Cont.)

### Continue to update and enhance our existing indoor and outdoor park facilities.

#### Objectives:

1. Review and schedule upgrades to energy efficient or resource reducing product conversions for items like toilets, urinals, faucets, hand-dryers, lighting, etc. throughout the park system.
2. Improve/replace park benches and picnic tables as needed or purchase others to enhance new play areas.
3. Plant new trees as diseased trees are removed.

#### Potential Funding/Execution:

- Utilize forestry, operational or capital budget for improvements on a scheduled plan.
- Create memorial bench program.
- Continue offering and promote the Tribute Tree program.
- Work with volunteer groups to obtain donated seedlings.

### Foster awareness of nature and sustainability among park visitors.

#### Objectives:

1. Add environmental support options to current parks to improve and sustain natural ecosystems (examples: Butterfly gardens, pollinator houses, bat houses, bird houses, etc.)
2. Use Eco-signage that educates the public about local plants, pollinators, animals, natural waters, etc.
3. Expand environmental education programming in recreation activities.
4. Model sustainable practices through operations (native plantings, water management, invasive species removal, solar lighting, refillable water stations, electric hand dryers, and other lower carbon options.)
5. Implement passive recreational opportunities

#### Potential Funding/Execution:

- Public: DNR, local and Federal Grants.
- Private: Local business sponsorships, individual memorial donations, Friends of the Parks
- Other: In-kind donations of supplies, volunteers, and Friends of the Parks.

# SECTION 5: Parks and Open Place Goals 2026-2030

## 2026-2030 Parks Maintenance Goals (Cont.)

**Review and consider options to convert the existing gas-powered parks maintenance equipment, tools, machinery and vehicles to battery-powered options.**

### **Objectives:**

1. Develop cost analysis including purchase price, maintenance costs and breakeven points, also including the product the item can produce.
2. Consider for buildout of charging devices, efficiency, storage, maintenance, etc.

### **Potential Funding/Execution:**

- Green grant sources
- Operational/Capital budget
- Government credits

## SECTION 6: Conclusion

The 2026–2030 Parks and Open Space Plan represents a collective vision for the future of Pewaukee’s parks, natural areas, and recreation amenities. It reflects the community’s voice, values, and aspirations—balancing what makes Pewaukee special today with what will allow it to grow thoughtfully and sustainably in the years ahead.

This plan provides clear direction for maintaining and enhancing existing spaces, expanding connections through trails and pathways, preserving natural resources, and creating meaningful recreation opportunities for people of all ages, abilities, and backgrounds. It establishes priorities, outlines implementation strategies, and offers tools to guide decision-making, partnerships, and investment.

Successful implementation will require collaboration—between municipalities, elected officials, partner organizations, volunteers, and the broader community. With shared commitment and continued engagement, these goals are both achievable and impactful.

As Pewaukee evolves, this plan ensures that its parks and open spaces remain central to community identity, health, and quality of life. It honors the past, responds to present needs, and prepares for a future where parks remain essential places to gather, connect, explore, and belong.

By embracing this plan, Pewaukee Parks and Recreation affirms its dedication to building a vibrant, inclusive, and resilient park system—one that will serve current residents and future generations with pride.

# Appendix A - Joint Parks and Recreation Department Ordinance

Note: The Village of Pewaukee and the Town (now City) of Pewaukee adopted identical ordinances establishing the Joint Parks and Recreation Department. Only one version is reproduced here for reference.

## VILLAGE OF PEWAUKEE – ORDINANCE NO. 429

## CITY OF PEWAUKEE – ORDINANCE NO. 96-19

STATE OF WISCONSIN CITY/VILLAGE OF PEWAUKEE – WAUKESHA COUNTY

### AN ORDINANCE REGARDING THE ESTABLISHMENT OF A JOINT PARKS AND RECREATION DEPARTMENT AND BOARD FOR THE CITY OF PEWAUKEE AND VILLAGE OF PEWAUKEE

WHEREAS, the City of Pewaukee and the Village of Pewaukee, pursuant to the provisions of Section 66.30 of the Wisconsin Statutes, have entered into an Agreement to establish a Joint Parks and Recreation Department and Board; and, WHEREAS, the governing bodies of the City and Village of Pewaukee desire to make the terms of the Agreement part of their respective municipal codes.

NOW, THEREFORE, the Common Council of the City of Pewaukee and the Village Board of the Village of Pewaukee, Waukesha County, Wisconsin, do ordain as follows:

#### **Section 1 – Creation of Joint Department and Board**

##### **1.07 JOINT PARKS AND RECREATION DEPARTMENT AND BOARD**

The Pewaukee City Common Council and Pewaukee Village Board hereby establish a Joint Parks and Recreation Department as a department of the two municipalities which shall be known as the Pewaukee Parks and Recreation Department. The Department shall be responsible for the provision of recreation opportunities, activities and programs in the City and Village parks, the maintenance of the City and Village parks, and such other duties as assigned by a Joint Parks and Recreation Board, this Joint Board shall be advisory to the City Common Council and Village Boards.

#### **Section 2 – Joint Board Establishment**

Section 1.07(a) of the Municipal Code of the City of Pewaukee is hereby created to read as follows:

##### **1.07(a) 1 – ADOPTION OF ORDINANCE**

The City and Village of Pewaukee adopt this ordinance for the purpose of creating a Joint Parks and Recreation Department. Said Joint Parks and Recreation Department shall be created and established effective January 1, 1997.

##### **1.07(a) 2 – CREATION OF JOINT PARKS AND RECREATION BOARD**

To oversee the operation of the Joint Parks and Recreation Department, a Joint Parks and Recreation Board shall hereby be created having the duties and responsibilities as set forth herein.

##### **1.07(a) 3 – COMPOSITION OF BOARD**

The Joint Parks and Recreation Board, hereinafter referred to as the “Joint Board”, shall be composed of seven (7) voting members and two non-voting ex-officio members. The Village of Pewaukee President shall appoint one (1) Trustee from the Village Board and two (2) citizens. The City Mayor shall appoint one (1) Alderperson from the City Common Council and three (3) citizens. All seven such appointees shall be voting members. In addition, the Administrators of both the Village and City may attend meetings and take part in discussion as ex-officio members of the Joint Board.

##### **1.07(a) 4 – TERMS OF JOINT BOARD MEMBERS**

a. Terms of the initial voting members shall commence on January 1, 1997 and end as follows:

a. Two City Members – December 31, 1998

b. One Village Member – December 31, 1998

c. Two City Members – December 31, 1999

d. Two Village Members – December 31, 1999

b. Subsequent terms. Following the initial appointments, the terms of all Joint Board members shall be for three (3) years commencing on January 1.

c. Unfilled vacancies. When a voting member resigns, is removed from his/her membership on the Joint Board, or loses his/her elected positions on the City or Village Board before the end of the terms, the affected Village President or City Mayor shall appoint an appropriate person to fill such vacancy for the remainder of the term, as set forth above.

**1.07(a) 5 – GENERAL OPERATION OF THE JOINT BOARD**

- a. Election of Officers. At its first meeting after its creation and thereafter at its first meeting after January 1 each year, the Joint Board shall choose from its members a chairperson to preside at its meetings, a vice chairperson to act in the absence of the chairperson, and a secretary.
- b. Meetings. The Joint Board shall hold meetings at City of Village Hall/Offices, or at a designated public building and such meetings shall be held at a regular time at least once in each consecutive two calendar month period beginning January 1. In addition, the Joint Board Chairperson, City Mayor or Village President may call special meetings of the Joint Board when it is determined necessary to do so in order to conduct and/or expedite the operations of the Joint Parks and Recreation Department. An official meeting of the Joint Board shall require that four (4) voting members be present with on such member being either the Chairperson or the Vice-Chairperson, and at least one member from each the City and Village. All meetings of the Joint Board shall be properly noticed as prescribed in Section 19.84 of Wisconsin Statutes, and, except as provided in Section 19.85 of Wisconsin Statutes, all meetings of the Joint Board shall be open to the general public. The Joint board shall keep a written record of its proceedings, which shall be transmitted to both the City and Village Clerks and Boards.

**1.07(a) 6 – DUTIES AND RESPONSIBILITIES OF THE JOINT BOARD**

- a. Budget. The Joint Board shall prepare, with the assistance of the Parks/Recreation Director, an annual budget for presentation and recommendation to the City Council and Village Board. The Parks/Recreation Director or Joint Board may, from time to time, request the assistance of City and Village auditors, financial advisors and Administrators in the preparation of the annual budget.
- b. Hiring. The hiring of the Park/Recreation Director shall require the approval of the City and Village Boards. It is understood that the 1996 City Park/Recreation Director shall be appointed as the initial Joint Park/Recreation Director.
- c. Department Policy. The Joint board shall assist the Parks/Recreation Director in establishing and implementing operational policies within the Joint Parks and Recreation Department, hereinafter referred to as the “Department”, including review of policies and procedures and departmental expenditures.
- d. Hearing Community Feedback. The Joint Board shall be responsible for receiving and reviewing community feedback related to department services and programs, and may consider policy modifications in response to such feedback.
- e. Review Policies. The Joint Board shall review and approve matters of Department policy or shall initiate the creation, amendment or rescinding of any such policy as a recommendation to the City Council or Village Boards.
- f. The Joint Board shall review and make recommendations to the City Council or Village boards on such park related matters as park land acquisition or building projects.

**Section 3 – Duties of the Park/Recreation Director**

Section 1.07(b) of the Municipal Code of the City and Village of Pewaukee is hereby created to read as follows:

- 1. The Parks/Recreation Director, hereinafter referred to as the “Director”, shall be responsible for the daily operation and management of the Department, subject to policies established and agreed upon by the Joint Board and both the City Council and Village Boards.
- 2. The Director shall annually, recommend a proposed budget to the Joint Board for the subsequent calendar year.
- 3. The Director shall recommend, for Joint board and City Council and Village board approvals, the appointment of persons who have been hired in the positions of Recreation Manager and Parks Supervisor.
- 4. The Director shall also be responsible for supervising the general maintenance of parks, park buildings and facilities and recreational programming.
- 5. The Director may, from time to time, be assigned other park and recreation related duties by the Joint Board within time and budget constraints.

**Section 4 – General Policies**

Section 1.07(c) of the Municipal Code of the Town [Village] of Pewaukee is hereby created to read as follows:

**1.07(c) – GENERAL POLICIES**

**1. Real Property.**

The City and Village shall continue to individually own all respective real property, buildings and fixtures located within their corporate jurisdictions. Upon joint agreement by the City Council and Village Boards that a need exists for acquisition of additional lands or construction of additional buildings or building additions to facilitate Department operations, the unit of government in which the new lands or facilities are to be located shall be solely responsible for all such acquisition and/or construction costs.

2. Use of Parks/Recreation Land, Vehicles, Buildings and Facilities. The Director and all Department personnel should have the right of official use of all land, vehicles, buildings and facilities owned or leased by either or both the City and the Village for parks or recreation purposes, and there shall be no rental or lease payments by either the City or Village for such use.

3. Vehicles. The City and Village shall continue to individually own all vehicles presently titled in their respective names. In the event the need arises to acquire special vehicles necessary for the parks/recreational requirements of both the City and the Village, following approval of a joint resolution of the City Council and Village Boards, the vehicle shall be acquired and its cost shall be apportioned as set forth in the approved resolution, taking into consideration such factors as service area, population, and assessed value. In the event the need arises for acquisition of a vehicle which shall be primarily the requirement of one unit of government, its cost shall be solely the responsibility of that unit of government.

4. Equipment. The City and Village shall continue to individually own all equipment presently titled in their respective names. In the event the need arises to acquire equipment which shall be necessary for the park/recreation needs of both the City and the Village, following approval of a joint resolution by the City Council and Village Boards, the equipment shall be acquired and its cost apportioned as set forth herein. In the event the need arises for acquisition of equipment which shall be primarily the requirement of one unit of government, the cost shall be solely the responsibility of that unit of government.

5. Ownership of Personal Property. The personal property and vehicles acquired jointly by the City and the Village shall be owned by the City and Village as tenants in common. The Director shall keep records showing the dates and costs and percentages of contribution of the City and Village with regard to each joint purchase of personal property and vehicles and shall transmit copies of such documents to the Clerks of the City and Village.

6. Operational Expenses/Revenues. The budget and costs for operating the recreational programs and activities of the Department, including cost of the Director, full time staff and seasonal employees shall be apportioned to and paid by the City and Village as follows: 50 percent of the total budget/costs distributed to the City and Village based on respective percentages of the combined annual equalized value, and 50 percent of the total budget/costs distributed to the City and Village based on respective percentages of the combined annual official state population estimates. Annually, beginning on October 15, 1996 and each October 15 thereafter, the percentage of operational expenses shall be adjusted as part of the budget formulation for the subsequent calendar year pursuant to this 50/50 formula. (In October 2024 the resulting apportionment of recreation related budget costs and revenues is 72 percent City, 28 percent Village.) Likewise, any revenues from recreational activities and programs shall be divided pursuant to the same formula and distributed to the respective City and Village Treasurer. Rental of parks, park facilities and equipment and charges to or donations from athletic/recreation clubs is not included in "recreation activities and programs", and, therefore, shall not be included in calculation or division of revenue.

7. Budget. The Department's budget shall be subject to approval of both the City and Village Boards based on a recommendation of the Joint Board as set forth herein. The amount assessed each unit of government under this ordinance shall be transferred to the appropriate Department accounts by the settlement dates established in Section 74.23 and 74.25 of the Wisconsin Statutes.

#### 8. Claims -

Budgeted Expenditures. All claims for payment for Department expenses which are contained within the budget shall be transmitted by the Director to the Clerk of the unit of government responsible for payment. Each Clerk shall transmit a list of approved claims to his/her counterpart Clerk and to the Department Clerk on a monthly basis. The accounts shall be audited on an annual basis by an independent auditor.

b. Non-Budgeted Expenditures. All claims for payment for Department expenses which are not contained within the budget shall be presented to the City and Village Clerks. Payment of claims for such non-budgeted items shall require approval of both City and Village Boards after review and recommendation of the Joint Board, with each unit of government paying the percentage established as set forth herein.

c. Payroll. All Department personnel will be paid through the City's payroll system, incorporating all City benefit programs and policies which apply. The City Clerk/Treasurer will, each month, transmit an invoice to the Village Clerk covering the Village's unpaid share of all personnel related costs as paid by the City along with such invoice. The City Clerk/Treasurer will submit a roster of those persons paid and the amounts paid each Department employee. In the event that the Village Board chooses to prepay their share of personnel costs, the City Clerk/Treasurer will transmit a monthly statement to the Village Clerk setting forth the amount paid out for personnel costs during the preceding month along with a roster of such costs. Any amount of prepayment by the Village in excess of actual expenditures at the end of the calendar year shall be carried over to the next calendar year unless such overpayment is requested by the Village Board to be reimbursed.

#### Section 5 – Dissolution

Either municipality may dissolve the Joint Park and Recreation Department with six (6) months' notice. Upon dissolution, assets and liabilities are divided based on contribution history and location. Disputed valuations are resolved through independent appraisal.

1.Maintenance Criteria.

a.Maintenance of parks includes: cutting of grass, dragging and shaping of softball and baseball diamonds; adding ball diamond mix and beach sand; placing backstops and other picnic/recreation furniture/equipment; marking play fields; placing of beach equipment; preparation and maintenance of lake ice rink; cutting brush and trimming trees; solid waste collection and disposal; cleaning of recreation buildings, including bathrooms; reseeding and sodding of damaged park areas; spraying weeds and trees, and fertilizing; minor repair of buildings and equipment; maintenance of park equipment; and, maintenance of park maintenance equipment. Winter maintenance of park buildings and grounds shall be accomplished by the respective Town and Village Public Works departments.

b.When it cannot be determined by the Director whether duties fall within the definitions set forth in either a or b, the Joint board will make such determination.

2.Dispute Resolution.

a.If disputes arise between the Town and Village relating to this ordinance, the Town and Village boards shall meet and attempt to resolve the differences. If the boards cannot agree, each Board shall appoint two Board Members to an ad hoc Conference Committee. The Conference Committee shall meet and agree by 1.0 introduction

majority vote on any disputed items. The decision of the Conference Committee shall be binding upon both the Town and Village Board.

b.In the event that the Conference Committee is unable to resolve a disputed matter within 60 days after the matter is referred to the Conference Committee, either Board may request arbitration pursuant to the provisions of Section 788 of the Wisconsin Statutes. The Town and the Village Boards shall select a single arbitrator and the decision of the arbitrator shall be final and binding upon the Boards. The cost of the arbitration shall be borne equally by the Town and the village.

**SECTION 5: Section 1.07(d) of the Municipal Code of the Town [Village] of Pewaukeeis hereby created to read as follows:**

1.07(d) DISSOLUTION

Either the Town Board or the Village Board may dissolve the Joint Park and Recreation Board at any time by giving six (6) months prior written notice to the other Board addressed in care of the Clerk of that unit of government and to the Joint Board. From and after the date of dissolution, each unit of government shall own those assets and liabilities which are solely titled in each unit of government.

Parks, park buildings, park equipment and fixtures shall not be subject to division and shall belong to the municipality in which the park is located. The value of jointly owned property, vehicles and equipment shall be divided in an amount equal to the average of the pro rata share of contributions from the date of the written Agreement between the Town and Village to the date of dissolution. In the event of a dispute in valuation of assets or liabilities, each Board shall hire an appraiser at its own cost, the two appraisers shall choose a third appraiser and the three appraisers shall value the assets and liabilities, calculate an average among the three and allocate the assets according to the ownership percentage aforementioned, and allocate the liabilities to each municipality according to the same percentage.

Upon dissolution, either of the units of government may provide the other unit of government the opportunity to purchase its interest in the assets of the Joint Department at the Value fixed by agreement or by appraisal as described above. In such case, the other unit of government shall have a period of sixty (60) days from the date of such provision within which to decide whether or not it desires to purchase such assets. If one unit of government desires to purchase the interest of the other, it shall have a period of time, not exceeding one (1) year from the date of its election, within which to pay the total due the government unit selling its assets. If both units of government choose not to purchase the assets of the other unit of government, each shall keep its percent of the assets as established above.The written notice of election by the selling unit of government shall be deemed adequate and sufficient for the other party as a binding commitment during this period of time.

**Section 6 – Severability**

**The provisions of this ordinance are severable. If any section is found invalid, the remainder shall remain in effect.**

**This ordinance shall take effect on January 1, 1997, following passage and publication as provided by law.**

SECTION 6.SEVERABILITY

The several sections of this Agreement are declared to be severable. If any section or portion thereof shall be declared by a court of competent jurisdiction to be invalid, unlawful or unenforceable, such decision shall apply only to the specific section or portion thereof directly specified in the decision, and shall not affect the validity of any other provisions, sections, or portions thereof of the Agreement which shall remain in full force and effect.

SECTION 7. EFFECTIVE DATE

This Ordinance shall take effect immediately upon passage and posting or publication as provided by law.

## Appendix B - Alternative Funding

### Alternative Funding 2021-2025

Program/Activity Sponsorships Total: \$65,900

Grants Total: \$648,506

Private Foundations/Donations: \$62,192

Naming Rights: \$283,250

Funds directed to the Friends of Pewaukee Parks through Department requests: \$77,000

**TOTAL: \$1,136,848**

# Appendix C - Community Interest Survey



The Pewaukee Parks and Recreation Department strives to continually meet the community’s interests for park and recreation services. Please take a moment to tell us how we are doing. Your input will prove valuable in future planning for the Department.

**Thank you in advance for your participation.**

**1. How familiar are you with the Pewaukee Parks and Recreation Department and its services?**

\_\_\_ Very familiar \_\_\_ Somewhat familiar \_\_\_ Not familiar

**2. Where do you get information about Pewaukee Parks and Recreation? Choose all that apply.**

\_\_\_ Activity guide in mail      \_\_\_ Activity guide online  
 \_\_\_ Website                              \_\_\_ Facebook  
 \_\_\_ Word of mouth                      \_\_\_ School flyers

**3. What is your overall satisfaction with Pewaukee Parks and Recreation?**

\_\_\_ Very satisfied \_\_\_ Satisfied \_\_\_ Unsatisfied \_\_\_ Unsure

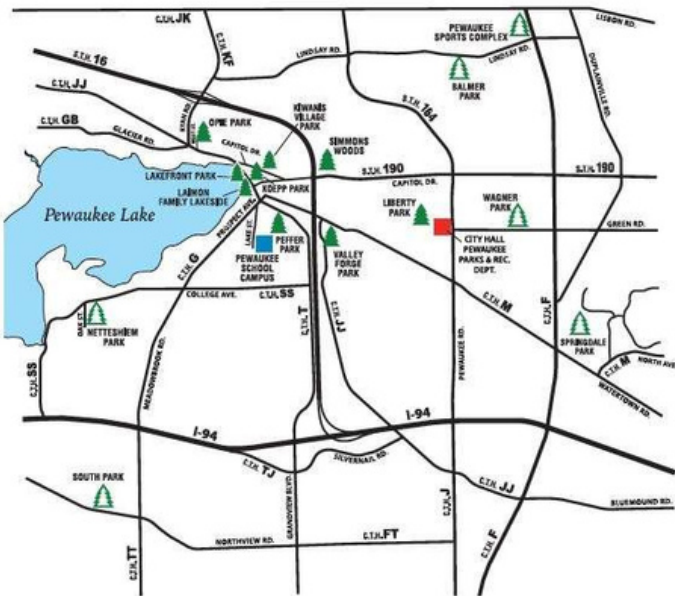
**4. What recreational activities do the individuals in our household participate in? Put an “X” by item you participate in, leave blank if you do not participate.**

**Youth Programs                              Pewaukee Parks & Recreation                              Other Organization**

<b>Youth Programs</b>	<b>Pewaukee Parks &amp; Recreation</b>	<b>Other Organization</b>
Arts		
Day Camp		
Parent/Child Programs		
Preschool Instructional		
Soccer		
Basketball		
Baseball		
Football		
Lake Activities (Kayak, Fishing, Boating)		
Outdoor Rec (Archery, Hunting, etc)		
Pickleball		
STEM		
Tennis		
Theatre/Dance/Music		
Volleyball		
Other activities (list)		

Arts/Crafts		
Basketball		
Day Trips		
Fitness Classes		
Football		
Lake Activities (Kayak, Fishing, Boat, etc)		
OutdoorRec (Archery, Hunting, etc)		
Pickleball		
Soccer		
Special Events		
Tennis		
Theatre/Dance/Music		
Volleyball		
Wellness Activities		

**PARKS SYSTEM MAP – Please review the map and then answer the following questions.**



**5. Which of the following parks have you or other members of your household visited in the past year?** *(Please check all that apply)*

- |  |  |
|--|--|
| <input type="checkbox"/> Balmer Park                 | <input type="checkbox"/> Peffer Park             |
| <input type="checkbox"/> Kiwanis Village Park        | <input type="checkbox"/> Pewaukee Sports Complex |
| <input type="checkbox"/> Koepp Park                  | <input type="checkbox"/> Simmons Woods Park      |
| <input type="checkbox"/> Laimon Family Lakeside Park | <input type="checkbox"/> South Park              |
| <input type="checkbox"/> Lakefront Park              | <input type="checkbox"/> Springdale Park         |
| <input type="checkbox"/> Liberty Park                | <input type="checkbox"/> Valley Forge Park       |
| <input type="checkbox"/> Nettesheim Park             | <input type="checkbox"/> Wagner Park             |
| <input type="checkbox"/> Opie Park                   |  |

**6. If you or other members of your household visited one of the parks, which park amenities were utilized? (Please check all that apply)**

- |  |   |  |
|--|---|--|
| <input type="checkbox"/> Basketball courts | <input type="checkbox"/> Sand volleyball courts | <input type="checkbox"/> Playgrounds   |
| <input type="checkbox"/> Soccer fields     | <input type="checkbox"/> Baseball diamonds      | <input type="checkbox"/> Walking paths |
| <input type="checkbox"/> Picnic shelters   | <input type="checkbox"/> Beach/swimming         | <input type="checkbox"/> Restrooms     |
| <input type="checkbox"/> Tennis courts     | <input type="checkbox"/> Pickleball courts      | <input type="checkbox"/> Boat launch   |
| <input type="checkbox"/> Nature areas      | <input type="checkbox"/> Park rentals           |  |

**Other:** \_\_\_\_\_

**7. Overall, how would you or other members of your household rate the conditions of Pewaukee parks?**

- Excellent    Good    Fair    Poor    Unsure/not applicable

**8. What types of expansion, would you like to have done to the current park system?**

- Acquire additional park space / land  
 Add new amenities to existing parks  
 None

**9. The Pewaukee Parks and Recreation Department would consider adding new specialized amenities to our existing parks. How interested would you or other members of your household be in the following potential amenities? (Please mark one box per amenity)**

	<b>Very Interested</b>	<b>Somewhat Interested</b>	<b>Not too interested</b>	<b>Not at all interested</b>
Beer Garden (Permanent)				
Community Center				
Dog Park				
Hiking Trails				
Inclusive Playgrounds/ Equipment				
Pickleball Courts (Permanent)				
<b>Other:</b>				

**10. What additional areas of programming would you like the Pewaukee Parks and Recreation Department to offer?**

\_\_\_\_\_  None

**11.** The Friends of the Parks of Pewaukee are a non-profit 501c3 made up of volunteers who are interested in helping support Pewaukee parks through volunteering, fundraising and other ways further improve our Park system. Some examples of their financial contributions are tree donations, ball diamond improvements, playground equipment contributions and more. If you are interested in contributing to their mission, either through volunteerism or financial contributions, contact: [friendsofpewaukeeparks@gmail.com](mailto:friendsofpewaukeeparks@gmail.com)

**12. Are you a resident of the City or the Village of Pewaukee?**

City       Village       Don't know

**13. How long have you lived in either the City or Village of Pewaukee?**

Less than 3 years  
 3-5 years  
 6-10 years  
 More than 10 years

**14. What members of your household visited or used Pewaukee parks within the last year?**

Adults  
 Children  
 Both  
 Neither

**15. Please list the ages of all members of your household, starting with your age first.**

\_\_\_\_\_, \_\_\_\_\_, \_\_\_\_\_, \_\_\_\_\_, \_\_\_\_\_, \_\_\_\_\_, \_\_\_\_\_, \_\_\_\_\_, \_\_\_\_\_, \_\_\_\_\_

**16. Do you have any additional comments?**

---

---

---

---

*Thank you for your time!*

## Appendix D - Interest Survey Question #10 responses

### WHAT ADDITIONAL AREAS OF PROGRAMMING WOULD YOU LIKE THE PEWAUKEE PARKS AND RECREATION DEPARTMENT TO OFFER?

#### Youth Programming

- More summer camp availability (ages 4-15)
- After-school programs for various age ranges
- Youth dance, gymnastics, and tumbling
- Cooking classes (e.g., with Ms. Katie)
- Introductory sports: volleyball, soccer, baseball, flag football
- Teen-focused activities and leagues (e.g., pickleball, Amazing Race, Olympics)
- Programs for ages 10+ who may not make school teams

#### Senior Programming

- Senior fitness and wellness classes
- Game and card clubs (e.g., sheepshead, bingo)
- Informational speakers, gardening, public gardens
- Trips and transportation to events
- A dedicated senior center
- Weekday and weekend programming options

#### Arts, Crafts & Cultural Programs

- Adult art classes: watercolor, drawing, painting, etc. DIY, woodworking, basket-making, flower arranging
- More adult craft options at Nettesheim
- Music in the park, live performances
- Book clubs and knitting/crochet drop-ins
- Board game events

#### Facilities & Infrastructure

- Indoor community/recreation center with multipurpose rooms
- Indoor basketball, pickleball, or multi-sport facilities
- Updated and inclusive playgrounds
- Enclosed pavilions and shaded picnic areas
- Better bathrooms and maintenance
- Expanded parking and seating areas (e.g., for bikers)

#### Events, Trips & Socialization

- More day trips, weekend excursions
- Community-wide events: food trucks, civic centers, beer gardens Intergenerational events (egg hunts, crafts, etc.)
- Single adult dances, trivia nights
- Informational classes (CPR, budgeting, sign language)

#### Aquatics

- Public swimming pool
- swimming lessons (children and adult)
- water aerobics and fitness classes
- Splash pads at various parks and summer camp location
- lake swimming and water access improvements
- ADA-compliant kayak launches
- Indoor aquatic center

#### Nature, Environmental & Educational

- Environmental education (plants, wildlife, hiking)
- Nature-based outings and learning opportunities
- Gardening, composting, tree planting
- Butterfly and pollinator gardens
- Bird watching, fishing, and sailing
- Kayak and paddleboard programs

#### Trails, Biking & Outdoor Recreation

- Expanded bike trail systems and connections (e.g., Bugline)
- Hiking and walking clubs
- Groomed and accessible nature trails
- Mountain biking trails and pump tracks
- Rollerblading tracks
- Snowshoeing and winter hiking

#### Pickleball & Tennis

- More outdoor and indoor pickleball courts
- Tennis lessons and leagues for youth and adults
- Converting unused tennis courts to pickleball

#### Inclusive & Accessible Programming

- Special needs programming
- Inclusive family-friendly events
- ADA-compliant facilities (kayak launches, playgrounds)

#### Other

- Skate & Disc Sports Skateparks and ramps (for bikes too)
- Disc golf courses (well-designed)
- BMX or pump track areas

## Appendix E- Interest Survey Question #16 Responses

### DO YOU HAVE ANY ADDITIONAL COMMENTS?

*These comments have been put into categories for easier reading.*

### RECREATIONAL PROGRAMMING

#### Youth Programs

- Park and rec was an amazing part of our kids childhood. We took advantage of so many programs. Programming for tweens/teens is hard, and we don't find options of interest currently. I think that's just how it is at that age. Therefore, please keep expanding offerings for those <10 and those over 50. That is the sweet spot.
- The Pewaukee recreation department has almost nothing for kids. My kids like swimming, soccer, etc., for which we are dependent on Waukesha recreation.
- It would be nice to have more arts and crafts, day trips, etc. not so many sports.
- I feel like I have to go to other cities to find activities I want to attend. The lake downtown is so small and packed I don't like to go. The other pay for parks have a lot of garbage on the ground. I wish there were more rentals for parties that were nice.
- Activities should be affordable so ALL may participate
- Our grandkids participated in an arts class at South Park this winter.
- I think you should charge more for the Summer Day Camp. The people who use these programs should pay more. The price is way below what is charged for most private day care. The other programs should not support this discount. Your other programs are getting very expensive. They are very much closer to what the private classes cost.
- Summer camps should be open to residents before non-residents. I live in the community and was unable to get my child into Wagner Park summer camp. Non-resident returning campers should not have priority over residents.
- We had our grandkids in an art class this past winter
- We enjoyed the classes we took.
- More classes for teens and adults together!
- More options for classes for toddlers would be nice
- My kids have grown up with the Spark and Summer leadership programs Park and Rec offers. We appreciate this program and those that run it. The parks need better equipment to make them more fun and enjoyable.
- Our grandson (age 3) is with us often so would like activities for him!
- I am forced to use Sussex park and rec programming more often as their timing for children's activities is more abundant for working parents
- Kid activities for my grandkids when they visit for a week
- Sussex has rec tennis leagues, Pewaukee doesn't.
- Your summer day camps need work. I think you need to revamp and hire better, more responsible and professional counselors. Ones that put the children first and not spend the entire day talking and failing to supervise the children, which is what they get paid to do. They are responsible for the well-being of a lot of small human beings. They should take that seriously.
- We really loved the dance program, arts, and crafts, that Mosaic joined the city! The dates and times didn't work for us this year, but we enjoyed it in the past.
- Just wish there were more water activities as so many other cities have pools and swimming lessons. We have to go elsewhere and would love it to be in Pewaukee.

## RECREATIONAL PROGRAMMING

### Adult Programs

- Would love to see a cooperation with the county park system, possibly the city of Waukesha or Sussex to start some form of shuffleboard leagues for the senior population with all of the senior living centers that are being built in the communities. My mother will not move back from Florida because there's nowhere for her to play shuffleboard. She has a condo here in the Village but goes to Florida for the winter to play shuffleboard talking with her group of friends they would love to play as well.
- I am a snowbird going to Arizona for the winter. By the time I return in May, most activities are completely filled. Therefore, I don't have much opportunity to participate.
- We like the senior open house and senior Christmas party
- Is there any opportunity for the Parks and Rec to partner with an organization to offer us the use of their indoor pickleball courts during the colder parts of the year? Thanks so much for considering.
- Working adults should have more parks & rec opportunities to participate...we're the ones actually paying the taxes.
- Is it possible to extend the cooking classes?
- I very much appreciate the many and varied senior classes and day trips. They are an important and vital addition to our quality of life. A million thanks!
- Women appreciate an evening class (due to working) & like to complete something same night.
- Pewaukee Park & Rec is a very organized and involved part of Pewaukee. In the past I was involved in many more activities and have always been impressed by your staff.
- Thank you very much for offering the adult Drawing and Painting classes! So appreciated and so important!! Our communication with others, and our skills improve each time.
- Better publicity for art courses like the Watercolor classes. The Instructor is excellent, but enrollment seems low. Use more media resources for marketing.
- would like local 55+ adult softball and volleyball leagues or teams in a league
- Love going on the Bus trips and some of the group sessions. Thank You for doing this for us.
- We did very much enjoy the pontoon tour of Pewaukee lake. I would love to do it again.
- Loved the pontoon tour of Pewaukee lake.
- Please add intermediate pickleball and more senior adult activities and opportunities.
- More day/weekend trips to places of interest would be appreciated
- It would be nice to have more doable excursions for Seniors
- More senior programs and opportunities
- Expand adult activities
- I would like more social events for seniors.

### Fitness/Wellness Programs

- I was taking Tai Chi at South Park. The facility is less than ideal. There should be mirrors so participants can see the back and front of the instructor.
- I used to partake in the senior exercise program, but I get it free through my insurance at other facilities. It's too bad because Wagner park is across the street but too expensive for me.
- Some of your fitness related classes are getting pretty pricey. I think twice about signing up and committing to classes because if you miss a class or two, the class becomes even more expensive. How about a punch card system for fitness type classes, i.e., yoga, Zumba, line dancing, etc.
- I want to give a special shout out to Susan Schneider Adam's and her Fusion Fit class. She makes the exercise fun and encouraging to all body types and ages!

## RECREATIONAL PROGRAMMING

### Fitness/Wellness Programs (cont)

- Have you considered using Galilee Church for your indoor fitness activities...chair yoga??
- We've been taking Tai Chi for four years now. Our class (Continuing Tai Chi) keeps growing in attendance each year, but the room assignment is unchanged. Can we get a facility bigger than the South Park pavilion? If not, what about installing wall mirrors so we can see what we are doing from any vantage point in the room?
- Summer collaboration with Orange Shoe is during the day; more fitness classes for people that work during the day. Note: Core and More was too intense for me. I would do it again if it was a 30 or 40 min class. Or offer Zumba in the evenings.
- I would be very open to discussing any of the above--especially about kayak access and opportunities for physical fitness opportunities available to seniors and those with disabilities. Please contact me if you will at 262-719-8403.
- Love the yoga classes. I have been consistently signed up for 7-8 years.
- I used to sign up for exercise classes before COVID. Once COVID hit, I found that the YMCA classes had less restrictions, so I joined there and no longer use the rec classes.
- Yes. The classes you offer are getting pretty pricey, especially when you break it down by what it costs for each class. And if you have to miss one or several, it really gets expensive per class. How about a punch card system for some of the fitness related classes or a more lenient "return" policy - like being to utilize any credit for classes you might have to miss (other than for medical reasons).
- I would love for you to add more adult crafts and fun activities such as the cooking demos which are awesome. Also utilize Nettlesheim for more crafts and exercise classes instead of kid summer care
- Based on the amount of interest in senior exercise classes, I would like to see a community center with larger rooms.
- I would love to see water aerobics and yoga. We just moved here, so not sure if they are available.
- I have taken several fitness classes the instructors are excellent, fun and encouraging.

### Other Programs

- Would like to see more community events utilizing our parks for families in the community
- Like a lot of the offerings I see in the P&R book but can't make the times work with work and vacations.
- Have it easier to volunteer for activities.
- Thank you for support great parks and summer programs!
- Thank you. Lifetime Pewaukee resident and appreciate your programming.
- I would love to see the creation of groups designed for meeting new people within the Pewaukee parks and rec community.
- Do not use the beach area because there are too many people. Most not from this area. Pick up dog poop. Someone needs to supply spare bags.
- I really hope the fall beer garden returns to Kiwanis this year, too bad about Beergo but hope Brewfinity can carry on and make it better!
- I would also love to see more food trucks at parks for events like beer gardens.

## FACILITIES & DEVELOPMENT

- It would be nice to have permanent grills and charcoal receptacles at parks where people could grill and relax. Fish cleaning stands at the lake area parks where fishing is allowed.
- Pewaukee golf course use is on the upswing. It would be a travesty to turn in into dense residential. Not advocating any additional city park, but it would seem in Parks department purview to actively promote keeping the golf course in Pewaukee as a golf course.
- I feel like a lot of Pewaukee's parks feel really run down. Before acquiring more park space, I think it would be pertinent to fix up the parks we already have. I would love to see updated equipment and benches that aren't sunk in the ground and are uneven. I also think that trees and shade are important, especially near playgrounds where small children will be playing.
- You should consider flooding an ice rink at South Park. The building is ideal for a warming house with restrooms as well as the wooden path that leads to the fields where the rink could be on the flat baseball field. Hire high school kids to be rink attendants and shovel/flood the rink to resurface it at the end of the night. This happens at parks all over MN and is a great way to keep the community active during the winter months.
- Love to see a dog park added to Village park - lots of open space behind the softball diamond.
- I think Pewaukee would benefit greatly by having a recreational center/community center. The community needs more family friendly places and something like that with a public pool would be extremely appealing to families!
- Please give Village Park a new face-lift. Give it a building like Wagner Park that people can rent out. It's horrible. My child went to summer camp there and he said the condition of the dungeon style like shelter and bathrooms were horrible. It's so outdated and ugly!
- Pewaukee is behind surrounding communities with park amenities and program space. It's sad.
- Village Park is in need of a HUGE building remodel. The building area and restrooms. Any plans of having a building area (like Wagner Park) at Village that could be rented out?
- I've noticed the swings at some of the parks (Wagner, South) are too high for a lot of kids to get on. As a parent with ongoing back issues, I cannot lift my child up to go on. I wish that some of the swings could be lowered. There is one building (picnic area) support beam at Wagner (near the playground/restrooms) that is very damaged at the bottom.
- We need a dog park, preferably with water access and/or wooded hiking trails and a nice restroom building.
- Would be great to fix up village park and the building
- I would love to see a community center with a dance studio
- I feel like we do not need a community center or inclusive splash pad/playground as we have one less than 5 miles away in a neighboring district. Our community offers a beach, lake and other great parks that I don't believe we need other amenities.
- If by community center you mean a facility that has a community pool, then yes. We can't seem to get a school referendum to include one, but this community really needs one. We are a lake community and should have a way to teach our children how to swim and it would give adults exercise opportunities in all seasons. We're still mad about all courts in Wagner Park being converted to pickle ball. We want tennis courts back at Wagner even if it means taking away some of the pickle ball or adding additional courts. Those tennis courts were well utilized by the community, and they are missed.

## FACILITIES & DEVELOPMENT

- Balmer tennis courts need repair.
- Pewaukee needs a swimming pool.
- Install tennis courts alongside the Pickleball Courts at Wagner Park
- Better (more modern) playground equipment at Parks. The new equipment going in at --Wagner is basic, and the orange/purple color scheme is dated. Look at new installations at Sussex or other communities (kids love climbing structures - reference what is at American Family Field).
- We would love to see a new shelter area WITH an indoor space available to rent at Springdale park, plus a remodel of the existing Wagner park shelter. We would also love to see a room in one of the shelter's remodel plans dedicated to fitness classes WITH mirrors. St Barts is ok for yoga (it's at least better than having yoga in the current Wagner park building.) But St Barts does not have any mirrors to check proper form, and Cindy doesn't help much to correct form. All of the bathrooms at the shelters need to be updated as well. Except for PSC, which has a very nice bathroom.
- Sussex built such a wonderful playground by their splash pad, I hope Pewaukee's is equally amazing once completed! I just feel like all of the new park equipment being installed at the Pewaukee parks is very basic/small and my kids don't like it as much as the huge green equipment they put in at Sussex Village park. Unfortunately, our children are now past interest in a splash pad. A pool would better serve the entire community. I know it's always said that we have the beach, but each time we visit the beach, it's been closed due to poor water quality. A pool would be so wonderful, so we didn't have to go to Brookfield or Waukesha to swim during the summers.
- I would love to see walking path/track with exercise stations
- put a Pickleball court in at Nettlesheim
- A Splash pad would be great! Also, so many non-Village or non-City people using the beach- this prevents it from being accessible to residents of Pewaukee. I would love to see restrictions put on Pewaukee land/beach use.
- Valley Forge needs help! I would like to have the No Dogs allowed signs enforced at parks. Otherwise, we love the updates to the playgrounds and look forward to the splash pad!
- Would love a public pool! (But I know this is very costly). Just throwing it out there! We are all excited for the new splash pad!
- I would love to see a dedicated and upgraded baseball field for the Varsity Pirates!
- Would love bike paths or walking trails to connect with downtown Pewaukee easier. More parking at new Fox river trail
- I would like to see more bike trails that connect to Lake Country and Bug Line, and get around the Lake
- Would like to see something more like what Waukesha offers at the Schutze Center. Grateful for what is offered - just feel it needs to be expanded.
- A skatepark like what Oconomowoc and Wauwatosa have and other surrounding communities would bring more people to Pewaukee. Also a bike pump track like what has just opened in Wauwatosa would do the same.
- I would love more bike paths so we could easily bike around the city/village.
- Could we fix up Village Park shelter to be a little nicer for community events being close to the lake. Maybe like Hoyt Park in Wauwatosa
- It would be great if there were a safer way for children to bike to different neighborhoods. The path that was added to Duplainville has been wonderful. Please consider adding a similar one down Green Road.
- I would like to see the tennis courts at South Park in better condition. I would love more courts to be added.
- Please keep some tennis courts for just tennis not pickleball. We love the tennis courts at Nettlesheim!
- Like to see more seating availability along lakefront park
- I think we should focus on the Village park pavilion redo. This park is busy and does not look great. The baseball diamond needs some help too. Dirt/sand. It is embarrassing when hosting other teams.

## FACILITIES & DEVELOPMENT

- Splash pad at Kiwanis - the one at Pewaukee Sports Complex is too close to the Sussex one and many Pewaukee residents don't even realize it's there. Happy to see the playground equipment was upgraded - much needed!
- Very satisfied with the parks and events overall. I would love a special needs swing at Springdale Park and a safer climbing structure than the new one that was put in. There is no railing on one side, and it is dangerous for younger kids.
- Balmer recently did that water/sewer project, and it was great that they updated the playground during that project and backstop for the baseball diamond, but we were disappointed that they did not update the tennis courts which are in terrible condition. It would be amazing to put in pickleball courts there or at least do some pickleball and 1 tennis court. There are wasps' nests inside the poles right now every year, so they really aren't usable at all. And now there's so many trees gone and hardly any shade. So, the batting cage is in the sun, which is a huge bummer.
- I would really love some more local walking trails. It would be great to have developed hiking trails in the land that is zoned for hunting behind the new condo development off of Bluemound.
- The new Springdale Park playground equipment was, unfortunately, a really bad selection of equipment. The new equipment is worse than the old and offers very little for children of any age to enjoy. I'm not sure who designed it because it has a very major flaw in the design which is quite dangerous for kids under 7 to enjoy. My son was very disappointed, as were we, in the new playground. We don't feel like it's worth going to that park anymore because there is very little for him to do on the playground.
- Would love water feature - small splash pad and lifeguards at the beach
- Would love to see the bike paths extended to Pewaukee Sports complex. Either from Wagner park, or across F (much more complicated, I'm sure!)
- I would love to see the boardwalk at Simmons Woods maintained. I would also like to see more bike/pedestrian paths since drivers are now so distracted they can't seem to stay in their lane.
- It would be great if you could add some additional features to the pickleball courts at Wagner (seating, shade) and more permanent courts there or in other parks.
- I'm excited to have the proposed bike trail connecting the bike path downtown.
- Walking paths around Pewaukee Sports Complex, hours of splash pad, more pickleball courts needed.
- Balmer park tennis courts are in poor condition, too many cracks, its unsafe. A Dog park would be exceptional. Adding more hiking trails or nature to the PSC would be nice. I chose to go to another park and rec org for pickleball play because it was significantly more affordable.
- Playground equipment at Springdale park is unsafe for young children.
- Why don't we have a dog park?
- Yes. Please add a railroad park at Duplainville. It would be a more consistent draw than the Sports Complex, cheaper to build and maintain, would promote safety, and bring in tourists with \$\$ to spend at local restaurants, gas stations, etc.
- We and others I know have had to play ball at Springdale park and I don't know why we spent money on a new playground at that park and have let the baseball field get so run down. The old playground was perfectly fine. We could've taken the money it cost for a new playground and had a baseball field that didn't have paint peeling benches, weeds all over the infield, and actual edging between the infield and outfield.
- Balmer park tennis courts need some TLC!
- More dog-friendly areas.
- We need safe bike trails.
- A community pool would be first priority over any other additions for our family.

## **FACILITIES & DEVELOPMENT**

- Put in at least a splash pad somewhere. A pool would be best.
- We need more pickleball courts - and open playtime. I don't want to see the prime hours occupied by designated park and rec leagues.
- Please convert at least one of the tennis courts to Pickleball at Nettesheim; please offer more yoga instructors
- Want more bike trails
- public pool!
- Bathroom facilities at all public parks would be amazing!
- Keep the sledding hill at Liberty park!
- We need a Pool, at least a kiddie pool with zero entry
- More outdoor skating rinks
- Make tennis courts at Nettesheim into pickleball courts.
- We need more Softball fields. Our daughters play with Pewaukee Predators and have to practice in Waukesha and play home games in Sussex. It's really sad these young girls have nowhere to play in Pewaukee parks!
- Please put in sidewalks
- Skateboard ramp and area for kids
- Thank you for all the work that goes into creating such a family-friendly park system! One item of feedback I have is that a few weeks ago we visited Springdale Park to play on the new equipment. I appreciate the investment into play equipment for children but did want to call attention to the specific structure selected. The floating steps leading to the slide at the highest point was concerning. Even my children were alarmed at how unsafe it was and how easy it would be for a child to fall off those steps - especially when kids are running through them. Again, I appreciate the upgrade, especially knowing how expensive playground equipment is, but just felt the need to call attention to that particular fall hazard.
- ADD Pickleball net to Springdale Park court or move the bounty lines in order to use the tennis court net.
- I would rather see a pool than the splash pad. Splash pads are nice, but we have several already in the area.

## **CLEANLINESS & MAINTENANCE**

- Add trash cans in the village neighborhoods for dog poop bags.
- I'd like to see the parks cleaner. Seems like there's often a lot of trash. Also, the beach gets overrun and strewn with trash on busy summer days.
- Beach needs more oversight during summer
- Parks are always clean and safe. Thank you.
- I appreciate that the South park where I attend tai chi, is usually clean.
- Thank you for the opportunity to say that the rafters at the Wagner Park building really could use a good dusting!!!
- Parks are integral to communities. We appreciate them. We would like to see less dog poop at Kiwanis park. Maybe provide bags/signs?
- Plant more trees!!
- Wagner Park is not landscaped to drain and remains soggy most of the time.
- The grass areas around the Wagner park pond is pure weeds. Looks bad.
- There is graffiti sprayed on the Balmer Park Tennis Court wall. Can that be repainted?
- Prefer parks with mulch instead of recycled tire footing due to hazards and cancer risk from recycled tires.
- Excellent care of the parks. I live across from Nettesheim. Very good care.

## **CLEANLINESS & MAINTENANCE**

- Please blow off pickleball courts –especially after trimming weeds at the surrounding fence
- The baseball infields in the parks need more attention. Full of weeds and not raked/drug. Some kid is going to catch a ball in the face. If equipment was onsite nearby parents could volunteer to help out if it is a manpower/budgeted time issue.
- I like seeing the buckthorn and honeysuckle mitigation – it's making paths easier to walk and you can enjoy more nature
- We love the parks in the area; in the interest of protecting kids from chemicals, we would love it if parks would not spray the grass or surrounding areas and keep them as natural as possible (maintaining trees, greenery, etc).

## **UNCATAGORIZED COMMENTS & FEEDBACK**

- Partner with Pewaukee club sports fairly and equally. Pewaukee club sports shouldn't have to use more Waukesha fields and space when we have it available in our backyard.
- I feel the Park and Rec Department is very involved in our community in Pewaukee.
- The parks and recreation department have done a nice job improving the play equipment at Kiwanis Village Park. That's the one I am most familiar with because I live nearby. I know there is an inclusive playground being built, and I think that's fantastic!
- Dale- that facilitates pickle ball seems like a great person
- Parks & Rec does a great job! Keep up the good work!
- We love Park and Rec!
- Great job to the parks and rec staff! We are excited to visit some of the new park facilities this summer!!
- Ready to have a splash pad for the grandkids! And like the historical boat tour of the lake.
- We have used almost every park and summer camp in Pewaukee. I couldn't be happier with my decision to live here. Now that our kids are older, I mainly use Simmons woods for daily enjoyment. Thank you for your great work through the years.
- Our grandkids use all the parks checked. We would like to see the no dogs allowed enforced. Dog poop (often in bags) is everywhere/beach too. We have seen dogs poop in the beach water by dam, owners do NOT p/u. Dog poop on the bridge often. I am not sure if a dog park would help. Thank you for the survey, We love Pewaukee Parks. We also lived over 20 years in the city of Pewaukee.
- Love our parks!
- We love the activities offered for adults!
- Love our parks!
- We love Pewaukee living!
- As much as I love our park system.... I think others would agree with me that our roads could use some real work before we do anymore for our parks. I would recommend looking at Prospect and Meadowbrook Roads.
- The city of Pewaukee has a wonderful park system for families. I live near Wagner and when I walk in 5 fields, I love seeing how well kept and busy the park is.
- Thanks for having a great program and paths available to us!
- We love Pewaukee Park and Rec!
- Pewaukee is a great place that has lovely parks.
- Park & Recs Dept does a great job! Thanks for all your efforts.
- Would love it if you could add a sign that limits time on the pickleball courts to one hour or rotate people in if there are people or groups waiting.

## UNCATEGORIZED COMMENTS & FEEDBACK

- We love Pewaukee Park and Rec!
- Pewaukee is a great place that has lovely parks.
- Park & Recs Dept does a great job! Thanks for all your efforts.
- Would love it if you could add a sign that limits time on the pickleball courts to one hour or rotate people in if there are people or groups waiting.
- Love your parks.
- Thank you for all that you do! We love the programs and the parks, just wish our neighborhood park (Nettesheim) was updated with more things to do.
- Lastly – happy to hear about the cruise ordinance and hope it promotes lakefront safety, however, would love to see better enforcement of parking limits at the lakefront – it’s unfortunate that someone at the beach can park all day long without supporting a lakefront business.
- You do a great job, thank you!
- You do a great job. Thank you.
- I have had family of all ages visit and love going to the lakefront beach
- The parks are great. Reduce auto traffic in front of the lake by having one way only traffic during the summer months or in the evenings.
- You do a great job! Thank you!
- We LOVE Pewaukee parks activities and system!!
- Our 19 year old is a special needs person but he enjoys hitting the pickleball around. Also thanks for the special beer garden events at Springdale Park.
- Pewaukee Parks are a great natural resource for everybody.
- Happy with you guys!
- Thank you for the survey
- I'm very happy with what the Parks offer
- We think that the parks are very well kept as well as continually updating equipment and facilities. Thank you for all that you do.
- Thanks for all your hard work!
- Thank you for all you do
- Yes, eliminate the two lane car traffic on Wisco Ave on weekends. Transform one lane of traffic to make beach wider. Make the street a one way road and add permanent speed bumps and make the entire road a pedestrian-biker-first zone.
- Visited parks with grandkids, not accounted for in the survey
- I suggest we spruce up existing parks. Lots of weeds and rough terrain. Playground equipment at Wagner park needs some work.
- Consult folks with ADA issues before installing ADA docks.
- Appreciate Pewaukee Parks very much!
- I have appreciated access to the tennis courts and summer children's programming
- Thanks for all you do!
- I don't take my dog to dog parks because I don't trust the behavior of other dogs & their owners and it's not conducive to actual hiking.
- Thank you for all the services that you offer to this community, everyone is always helpful at the Pewaukee Parks & Recreations Office
- Grandchildren 15,16,18,20 years old
- No just keep up the good work!

## **UNCATAGORIZED COMMENTS & FEEDBACK**

- Please work together (the city and village) to enact a burn ordinance (limit days and time) to help protect the wonderful outdoor environments of Pewaukee and the health of its residents and visitors. Look to neighboring communities who have an ordinance (Brookfield) for guidance.
- Trying to schedule special events at parks is difficult due to the number of baseball and soccer games scheduled at prime times. It would be nice to have dedicated days to non-sports activities so that other community events can be scheduled.
- Keep up the good work for all ages.
- Thank you for all you do in our community!
- Please share survey results
- We babysit our grandson and will be using the playgrounds soon and look forward to the splash pad.

## **Exciting news!**

Pewaukee Parks & Recreation will be running the popular Waterfront Wednesday live music series for 2026.

Positively Pewaukee, who had been running this event, has dissolved which gives us the opportunity to take over a beloved summer tradition at our own beautiful Lakefront Park.

### **Details:**

**Wednesday evenings, June 3-July 29**

**6:00-8:30pm**

**Lakefront Park**

**The Friends of Pewaukee Parks** have agreed to staff the concessions area weekly as a fundraiser for their organization. This is a great opportunity for real and consistent funding that will benefit our department's initiatives.

We will be contracting with Brewfinity to provide craft tap beers and working with another distributor for domestic bottled/canned beer and beverages.

Monica will be handling all organization, promotion and details for Waterfront Wednesdays and the majority of the work has already been completed.

### **Sponsorships**

We have secured a seasonal presenting sponsor, Generac, which covers the cost of the bands. We also have confirmed 7 of 9 weekly sponsors so far.

1. Chocolate Factory
2. Beachside Boat & Bait
3. The Waters
4. Seesters
5. Fred Astaire Pewaukee
6. Waukesha State Bank
7. Chiropractic on the Lake
- 8.

Below is a flyer, we hope to see you there!

PEWAUKEE PARKS & RECREATION

# Waterfront Wednesdays

SUMMER CONCERT SERIES



LIVE MUSIC 6:00-8:30PM  
LAKEFRONT PARK  
PEWAUKEE

PRESENTED BY  
**GENERAC**



**JUNE 3**  
ANDREA &  
THE MODS  
HITS FROM 70S-TODAY



**JULY 8**  
THE WINGMEN  
80S-90S VARIETY



**JUNE 10**  
ZMF  
CLASSIC ROCK



**JULY 15**  
BRECKEN MILES  
COUNTRY



**JUNE 17**  
TWANG  
DRAGONS  
COUNTRY



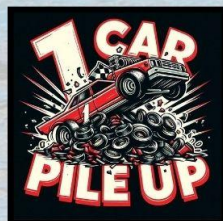
**JULY 22**  
WINDY HOPE  
VARIETY



**JUNE 24**  
DIRTY BOOGIE  
VARIETY ROCK N ROLL



**JULY 29**  
RADIO DAZE  
80'S ROCK



**JULY 1**  
1 CAR PILEUP  
ROCK/POP



CONCESSIONS SALES BENEFIT:  
FRIENDS OF PEWAUKEE PARKS  
A 501(C)(3) ORGANIZATION

SCAN THIS QR CODE FOR MORE INFORMATION  
AND HOW TO GET INVOLVED.



City of Pewaukee - New Agenda Item

Agenda Language:  
Discussion and possible action regarding Laimon Park financials for November 2025.

Sub Item Agenda Language:

Background Provided By:

Background:

Fiscal Impact:

Recommended Motion:

**REVENUE**

Account Number		11/30/2020	11/30/2021	11/30/2022	11/30/2023	11/30/2024	11/30/2025	Prev Yr to		YTD % to	
								Current	2025 YTD Total		2025 Budget
960-00-40421-001-000	CONTRIBUTED CAPITAL	-	-	-	-	-	-	-	-	-	0.00%
960-00-40439-000-000	USE OF FUND BALANCE	-	-	-	-	-	-	-	-	-	0.00%
960-00-40474-000-000	OTHER REVENUE/GRANTS	-	-	-	-	-	-	-	-	-	0.00%
960-00-40622-001-000	GASOLINE SALES	-	-	-	-	-	-	-	72,002.13	81,000.00	88.89%
960-00-40622-002-000	BOAT LAUNCH FEES	-	83.00	(11,051.50)	14.00	-	-	-	6,587.67	7,000.00	94.11%
960-00-40622-003-000	RENTAL REVENUES	(620.00)	-	-	-	-	-	-	77,669.57	76,000.00	102.20%
960-00-40622-004-000	RESIDENTIAL/COMM RENT PYMTS	2,980.15	3,069.56	3,161.65	6,955.64	-	-	-	43,952.94	43,952.00	100.00%
960-00-40635-000-000	DONATIONS	-	-	-	-	-	-	-	-	-	0.00%
960-00-40635-000-100	DONATION/DESIGNATED/LAIMONS	-	-	-	-	-	-	-	-	-	0.00%
960-00-40636-000-000	INTEREST INCOME	3.86	2.38	119.34	187.52	181.90	-	(181.90)	5,414.84	1,800.00	300.82%
<b>Monthly Revenue Totals</b>		<b>\$ 2,364.01</b>	<b>\$ 3,154.94</b>	<b>\$ (7,770.51)</b>	<b>\$ 7,157.16</b>	<b>\$ 181.90</b>	<b>\$ -</b>	<b>\$ (181.90)</b>	<b>\$ 205,627.15</b>	<b>\$ 209,752.00</b>	<b>98%</b>

**EXPENSES**

Account Number		11/30/2020	11/30/2021	11/30/2022	11/30/2023	11/30/2024	11/30/2025	Prev Yr to		YTD % to	
								Current	2025 YTD Total		2025 Budget
960-00-50403-000-000	DEPRECIATION EXPENSE	-	-	-	-	-	-	-	-	-	0.00%
960-00-50427-000-000	PRINCIPAL/INTEREST ON DEBT	-	-	-	-	-	-	-	40,043.50	40,044.00	100.00%
960-00-51938-000-000	INSURANCE/PROP/LIABILITY/WC	-	-	-	-	-	-	-	4,694.74	5,200.00	90.28%
960-00-51940-000-000	LAKESIDE PARK LOAN PAYMENT EXP	-	-	-	-	-	-	-	-	-	0.00%
960-00-51950-000-000	LAND ACQUISITION EXPENSE	-	-	-	-	-	-	-	-	-	0.00%
960-00-51960-000-000	FISCAL AGENT FEE	-	-	-	13.60	10.32	20.89	10.57	466.24	1,200.00	38.85%
	<b>GENERAL GOVERNMENT EXPENSE</b>	<b>\$ -</b>	<b>\$ -</b>	<b>\$ -</b>	<b>\$ 13.60</b>	<b>\$ 10.32</b>	<b>\$ 20.89</b>	<b>\$ 10.57</b>	<b>\$ 45,204.48</b>	<b>\$ 46,444.00</b>	<b>97%</b>
960-00-55200-000-110	LAKESIDE PARK WAGES	-	-	-	-	-	-	-	3,238.25	5,250.00	61.68%
960-00-55200-000-130	LAKESIDE PARK FRINGE BENEFITS	-	-	-	-	-	-	-	-	-	0.00%
960-00-55200-000-140	LAKESIDE PARK UTILITIES EXP	-	-	451.37	559.78	(63.00)	-	63.00	593.15	1,000.00	59.32%
960-00-55200-000-150	GASOLINE EXPENSE	-	-	-	-	1,378.65	-	(1,378.65)	42,701.69	63,000.00	67.78%
960-00-55200-000-155	OPERATING SUPPLIES	-	1.06	474.91	41.28	2.76	523.26	520.50	2,857.01	5,500.00	51.95%
960-00-55200-000-156	GROUNDS & MAINTENANCE	2,325.00	-	-	3,369.00	3,350.00	4,094.00	744.00	11,527.98	15,000.00	76.85%
960-00-55200-000-160	EQUIPMENT MAINTENANCE	157.50	-	-	-	-	-	-	-	5,000.00	0.00%
960-00-55200-000-165	BUILDING MAINTENANCE	-	-	571.22	-	-	87.90	87.90	14,946.86	5,000.00	298.94%
960-00-55200-000-168	OTHER PROPERTY EXPENSE/TAXES	-	-	-	-	-	-	-	4,566.27	6,000.00	76.10%
	<b>CULTURE, MAINTENANCE &amp; TAXES</b>	<b>\$ 2,482.50</b>	<b>\$ 1.06</b>	<b>\$ 1,497.50</b>	<b>\$ 3,970.06</b>	<b>\$ 4,668.41</b>	<b>\$ 4,705.16</b>	<b>\$ 36.75</b>	<b>\$ 80,431.21</b>	<b>\$ 105,750.00</b>	<b>76.06%</b>
960-00-57605-000-000	CAPITAL OUTLAY - OTHER PARKS	-	-	-	-	-	-	-	33,150.50	-	0.00%
960-00-57610-000-000	LAKESIDE PARK CAPITAL OUTLAY	207,597.28	-	-	-	-	-	-	17,500.00	-	0.00%
	<b>CAPITAL OUTLAY</b>	<b>\$ 207,597.28</b>	<b>\$ -</b>	<b>\$ -</b>	<b>\$ -</b>	<b>\$ -</b>	<b>\$ -</b>	<b>\$ -</b>	<b>\$ 50,650.50</b>	<b>\$ -</b>	<b>0%</b>
<b>Monthly Expense Totals</b>		<b>\$ 210,079.78</b>	<b>\$ 1.06</b>	<b>\$ 1,497.50</b>	<b>\$ 3,983.66</b>	<b>\$ 4,678.73</b>	<b>\$ 4,726.05</b>	<b>\$ 47.32</b>	<b>\$ 176,286.19</b>	<b>\$ 152,194.00</b>	<b>116%</b>

**MONTHLY REVENUES AND EXPENSES TO BUDGET**

		REVENUE														YTD % to	
Account Number		2025	2025	2025	2025	2025	2025	2025	2025	2025	2025	2025	2025	2025 YTD Total	2025 Budget	YTD to Budget	Budget
		JAN	FEB	MAR	APR	MAY	JUNE	JULY	AUG	SEPT	OCT	NOV					
960-00-40421-001-000	CONTRIBUTED CAPITAL	-	-	-	-	-	-	-	-	-	-	-	-	-	-	-	0.00%
960-00-40439-000-000	USE OF FUND BALANCE	-	-	-	-	-	-	-	-	-	-	-	-	-	-	-	0.00%
960-00-40474-000-000	OTHER REVENUE/GRANTS	-	-	-	-	-	-	-	-	-	-	-	-	-	-	-	0.00%
960-00-40622-001-000	GASOLINE SALES	-	-	-	-	5,722.47	10,119.03	30,098.44	11,470.30	14,591.89	-	-	-	72,002.13	81,000.00	(8,997.87)	88.89%
960-00-40622-002-000	BOAT LAUNCH FEES	4.14	-	-	-	1,678.00	2,072.00	1,276.70	567.00	926.00	63.83	-	-	6,587.67	7,000.00	(412.33)	94.11%
960-00-40622-003-000	RENTAL REVENUES	22,313.55	14,096.25	40,367.50	(2,703.08)	-	3,675.00	(79.65)	-	-	-	-	-	77,669.57	76,000.00	1,669.57	102.20%
960-00-40622-004-000	RESIDENTIAL/COMM RENT PYMTS	10,746.45	-	-	3,689.61	3,689.61	3,689.61	3,689.61	3,689.61	3,689.61	11,068.83	-	-	43,952.94	43,952.00	0.94	100.00%
960-00-40635-000-000	DONATIONS	-	-	-	-	-	-	-	-	-	-	-	-	-	-	-	0.00%
960-00-40635-000-100	DONATION/DESIGNATED/LAIMONS	-	-	-	-	-	-	-	-	-	-	-	-	-	-	-	0.00%
960-00-40636-000-000	INTEREST INCOME	317.43	210.39	196.32	231.33	179.40	185.96	1,043.60	1,048.08	997.87	1,004.46	-	-	5,414.84	1,800.00	3,614.84	300.82%
<b>Total Revenues</b>		<b>\$ 33,381.57</b>	<b>\$ 14,306.64</b>	<b>\$ 40,563.82</b>	<b>\$ 1,217.86</b>	<b>\$ 11,269.48</b>	<b>\$ 19,741.60</b>	<b>\$ 36,028.70</b>	<b>\$ 16,774.99</b>	<b>\$ 20,205.37</b>	<b>\$ 12,137.12</b>	<b>\$ -</b>	<b>\$ 205,627.15</b>	<b>\$ 209,752.00</b>	<b>\$ (4,124.85)</b>	<b>98%</b>	

		EXPENSES														YTD % to	
Account Number		2025	2025	2025	2025	2025	2025	2025	2025	2025	2025	2025	2025 YTD Total	2025 Budget	YTD to Budget	Budget	
		JAN	FEB	MAR	APR	MAY	JUNE	JULY	AUG	SEPT	OCT	NOV					
960-00-50403-000-000	DEPRECIATION EXPENSE	-	-	-	-	-	-	-	-	-	-	-	-	-	-	-	0.00%
960-00-50427-000-000	PRINCIPAL/INTEREST ON DEBT	-	-	40,043.50	-	-	-	-	-	-	-	-	-	40,043.50	40,044.00	(0.50)	100.00%
960-00-51938-000-000	INSURANCE/PROP/LIABILITY/WC	-	-	4,694.74	-	-	-	-	-	-	-	-	-	4,694.74	5,200.00	(505.26)	90.28%
960-00-51940-000-000	LAKESIDE PARK LOAN PAYMENT EXP	-	-	-	-	-	-	-	-	-	-	-	-	-	-	-	0.00%
960-00-51950-000-000	LAND ACQUISITION EXPENSE	-	-	-	-	-	-	-	-	-	-	-	-	-	-	-	0.00%
960-00-51960-000-000	FISCAL AGENT FEE	139.52	22.62	17.55	16.47	19.63	18.37	16.36	20.47	18.01	156.35	20.89	466.24	1,200.00	(733.76)	38.85%	
	<b>GENERAL GOVERNMENT EXPENSE</b>	<b>\$ 139.52</b>	<b>\$ 22.62</b>	<b>\$ 44,755.79</b>	<b>\$ 16.47</b>	<b>\$ 19.63</b>	<b>\$ 18.37</b>	<b>\$ 16.36</b>	<b>\$ 20.47</b>	<b>\$ 18.01</b>	<b>\$ 156.35</b>	<b>\$ 20.89</b>	<b>\$ 45,064.96</b>	<b>46,444.00</b>	<b>(1,239.52)</b>	<b>97%</b>	
960-00-55200-000-110	LAKESIDE PARK WAGES	-	-	-	1,972.22	-	-	1,266.03	-	-	-	-	3,238.25	5,250.00	(2,011.75)	61.68%	
960-00-55200-000-130	LAKESIDE PARK FRINGE BENEFITS	-	-	-	-	-	-	-	-	-	-	-	-	-	-	-	0.00%
960-00-55200-000-140	LAKESIDE PARK UTILITIES EXP	(79.40)	-	-	(66.48)	207.11	-	(142.93)	525.93	-	148.92	-	593.15	1,000.00	(406.85)	59.32%	
960-00-55200-000-150	GASOLINE EXPENSE	-	-	-	-	2,699.12	7,705.78	14,460.09	9,423.77	7,160.84	1,252.09	-	42,701.69	63,000.00	(20,298.31)	67.78%	
960-00-55200-000-155	OPERATING SUPPLIES	0.69	-	0.69	4.14	2.76	508.91	969.55	838.13	3.70	5.18	523.26	2,857.01	5,500.00	(2,642.99)	51.95%	
960-00-55200-000-156	GROUPS & MAINTENANCE	-	-	-	-	-	-	6,850.00	180.00	223.98	180.00	4,094.00	11,527.98	15,000.00	(3,472.02)	76.85%	
960-00-55200-000-160	EQUIPMENT MAINTENANCE	-	-	-	-	-	-	-	-	-	-	-	-	5,000.00	(5,000.00)	0.00%	
960-00-55200-000-165	BUILDING MAINTENANCE	-	-	189.00	2,308.70	5,657.45	5,657.36	-	-	-	1,046.45	87.90	14,946.86	5,000.00	9,946.86	298.94%	
960-00-55200-000-168	OTHER PROPERTY EXPENSE/TAXES	4,566.27	-	-	-	-	-	-	-	-	-	-	4,566.27	6,000.00	(1,433.73)	76.10%	
	<b>CULTURE, MAINTENANCE &amp; TAXES</b>	<b>\$ 4,487.56</b>	<b>\$ -</b>	<b>\$ 189.69</b>	<b>\$ 4,218.58</b>	<b>\$ 8,566.44</b>	<b>\$ 13,872.05</b>	<b>\$ 23,402.74</b>	<b>\$ 10,967.83</b>	<b>\$ 7,388.52</b>	<b>\$ 2,632.64</b>	<b>\$ 4,705.16</b>	<b>\$ 80,431.21</b>	<b>105,750.00</b>	<b>(25,318.79)</b>	<b>76.06%</b>	
960-00-57605-000-000	CAPITAL OUTLAY - OTHER PARKS	-	-	-	-	33,150.50	-	-	-	-	-	-	33,150.50	-	33,150.50	0.00%	
960-00-57610-000-000	LAKESIDE PARK CAPITAL OUTLAY	-	-	-	-	-	-	-	-	-	17,500.00	-	17,500.00	-	17,500.00	0.00%	
200-00-55200-000-100	PARK IMPROVEMENTS - CAPITAL	-	-	-	54,630.00	10,015.00	54,630.00	(119,260.00)	-	-	-	-	15.00	-	15.00	0.00%	
	<b>CAPITAL OUTLAY</b>	<b>\$ -</b>	<b>\$ -</b>	<b>\$ -</b>	<b>\$ -</b>	<b>\$ 33,150.50</b>	<b>\$ -</b>	<b>\$ -</b>	<b>\$ -</b>	<b>\$ -</b>	<b>\$ 17,500.00</b>	<b>\$ -</b>	<b>\$ 50,650.50</b>	<b>\$ -</b>	<b>\$ 50,650.50</b>	<b>\$ -</b>	
<b>Total Expenses</b>		<b>\$ 4,627.08</b>	<b>\$ 22.62</b>	<b>\$ 44,945.48</b>	<b>\$ 4,235.05</b>	<b>\$ 41,736.57</b>	<b>\$ 13,890.42</b>	<b>\$ 23,419.10</b>	<b>\$ 10,988.30</b>	<b>\$ 7,406.53</b>	<b>\$ 20,288.99</b>	<b>\$ 4,726.05</b>	<b>\$ 176,146.67</b>	<b>\$ 152,194.00</b>	<b>\$ 24,092.19</b>	<b>116%</b>	

## MONTHLY COMPARISON TO PREVIOUS YEARS

		REVENUE									
Account Number		12/31/2020	12/31/2021	12/31/2022	12/31/2023	12/31/2024	12/31/2025	Prev Yr to Current	2025 YTD Total	2025 Budget	YTD % to Budget
960-00-40421-001-000	CONTRIBUTED CAPITAL	-	-	-	-	-	-	-	-	-	0.00%
960-00-40439-000-000	USE OF FUND BALANCE	-	-	-	-	-	-	-	-	-	0.00%
960-00-40474-000-000	OTHER REVENUE/GRANTS	(150.00)	-	-	-	-	-	-	-	-	0.00%
960-00-40622-001-000	GASOLINE SALES	-	-	-	-	-	-	-	72,002.13	81,000.00	88.89%
960-00-40622-002-000	BOAT LAUNCH FEES	-	108.45	(8.23)	(17.70)	(4.14)	-	4.14	6,587.67	7,000.00	94.11%
960-00-40622-003-000	RENTAL REVENUES	-	(26.49)	-	(14.05)	-	-	-	77,669.57	76,000.00	102.20%
960-00-40622-004-000	RESIDENTIAL/COMM RENT PYMTS	-	-	(72.35)	-	(7,401.00)	-	7,401.00	43,952.94	43,952.00	100.00%
960-00-40635-000-000	DONATIONS	-	-	-	-	-	-	-	-	-	0.00%
960-00-40635-000-100	DONATION/DESIGNATED/LAIMONS	-	-	-	-	-	-	-	-	-	0.00%
960-00-40636-000-000	INTEREST INCOME	153.38	1.63	3,369.91	197.54	7,610.36	-	(7,610.36)	6,597.54	1,800.00	366.53%
<b>Monthly Revenue Totals</b>		<b>\$ 3.38</b>	<b>\$ 83.59</b>	<b>\$ 3,289.33</b>	<b>\$ 165.79</b>	<b>\$ 205.22</b>	<b>\$ -</b>	<b>\$ (205.22)</b>	<b>\$ 206,809.85</b>	<b>\$ 209,752.00</b>	<b>99%</b>

		EXPENSES									
Account Number		12/31/2020	12/31/2021	12/31/2022	12/31/2023	12/31/2024	12/31/2025	Prev Yr to Current	2025 YTD Total	2025 Budget	YTD % to Budget
960-00-50403-000-000	DEPRECIATION EXPENSE	47,770.80	19,809.00	20,381.00	20,420.00	21,619.00	-	(21,619.00)	-	-	0.00%
960-00-50427-000-000	PRINCIPAL/INTEREST ON DEBT	(22,878.16)	(23,747.00)	(24,637.00)	(25,529.00)	(26,510.00)	-	26,510.00	40,043.50	40,044.00	100.00%
960-00-51938-000-000	INSURANCE/PROP/LIABILITY/WC	-	-	-	-	-	(977.67)	(977.67)	3,717.07	5,200.00	71.48%
960-00-51940-000-000	LAKESIDE PARK LOAN PAYMENT EXP	-	-	-	-	-	-	-	-	-	0.00%
960-00-51950-000-000	LAND ACQUISITION EXPENSE	-	-	-	-	-	-	-	-	-	0.00%
960-00-51960-000-000	FISCAL AGENT FEE	-	-	1.00	18.93	16.58	-	(16.58)	279.04	1,200.00	23.25%
<b>GENERAL GOVERNMENT EXPENSE</b>		<b>\$ 24,892.64</b>	<b>\$ (3,938.00)</b>	<b>\$ (4,255.00)</b>	<b>\$ (5,090.07)</b>	<b>\$ (4,874.42)</b>	<b>\$ (977.67)</b>	<b>\$ 3,896.75</b>	<b>\$ 44,039.61</b>	<b>\$ 46,444.00</b>	<b>95%</b>
960-00-55200-000-110	LAKESIDE PARK WAGES	3,273.47	3,442.14	977.08	277.92	1,965.55	-	(1,965.55)	3,238.25	5,250.00	61.68%
960-00-55200-000-130	LAKESIDE PARK FRINGE BENEFITS	-	-	-	-	-	-	-	-	-	0.00%
960-00-55200-000-140	LAKESIDE PARK UTILITIES EXP	304.89	157.23	261.02	327.14	-	-	-	593.15	1,000.00	59.32%
960-00-55200-000-150	GASOLINE EXPENSE	-	-	-	-	-	98.90	98.90	42,800.59	63,000.00	67.94%
960-00-55200-000-155	OPERATING SUPPLIES	1.00	1.59	611.96	121.89	189.69	2.22	(187.47)	2,859.23	5,500.00	51.99%
960-00-55200-000-156	GROUNDS & MAINTENANCE	1,875.00	9,300.00	5,600.00	2,500.00	1,850.00	3,000.00	1,150.00	14,527.98	15,000.00	96.85%
960-00-55200-000-160	EQUIPMENT MAINTENANCE	-	-	606.25	-	-	-	-	-	5,000.00	0.00%
960-00-55200-000-165	BUILDING MAINTENANCE	3,449.00	-	66.56	-	10,955.00	-	(10,955.00)	14,946.86	5,000.00	298.94%
960-00-55200-000-168	OTHER PROPERTY EXPENSE/TAXES	-	-	-	-	-	-	-	4,566.27	6,000.00	76.10%
<b>CULTURE, MAINTENANCE &amp; TAXES</b>		<b>\$ 8,903.36</b>	<b>\$ 12,900.96</b>	<b>\$ 8,122.87</b>	<b>\$ 3,226.95</b>	<b>\$ 14,960.24</b>	<b>\$ 3,101.12</b>	<b>\$ (11,859.12)</b>	<b>\$ 83,532.33</b>	<b>\$ 105,750.00</b>	<b>78.99%</b>
960-00-57605-000-000	CAPITAL OUTLAY - OTHER PARKS	-	-	-	-	-	-	-	33,150.50	-	0.00%
960-00-57610-000-000	LAKESIDE PARK CAPITAL OUTLAY	(307,531.32)	(6,400.00)	(8,900.00)	(18,855.00)	-	-	-	17,500.00	-	0.00%
<b>CAPITAL OUTLAY</b>		<b>\$ (307,531.32)</b>	<b>\$ (6,400.00)</b>	<b>\$ (8,900.00)</b>	<b>\$ (18,855.00)</b>	<b>\$ -</b>	<b>\$ -</b>	<b>\$ -</b>	<b>\$ 50,650.50</b>	<b>\$ -</b>	<b>0%</b>
<b>Monthly Expense Totals</b>		<b>\$ (273,735.32)</b>	<b>\$ 2,562.96</b>	<b>\$ (5,032.13)</b>	<b>\$ (20,718.12)</b>	<b>\$ 10,085.82</b>	<b>\$ 2,123.45</b>	<b>\$ (7,962.37)</b>	<b>\$ 178,222.44</b>	<b>\$ 152,194.00</b>	<b>117%</b>

**MONTHLY REVENUES AND EXPENSES TO BUDGET**

		REVENUE																
Account Number		2025	2025	2025	2025	2025	2025	2025	2025	2025	2025	2025	2025	2025	2025	2025	2025	YTD % to
		JAN	FEB	MAR	APR	MAY	JUNE	JULY	AUG	SEPT	OCT	NOV	DEC	2025 YTD Total	2025 Budget	YTD to Budget	Budget	
960-00-40421-001-000	CONTRIBUTED CAPITAL	-	-	-	-	-	-	-	-	-	-	-	-	-	-	-	-	0.00%
960-00-40439-000-000	USE OF FUND BALANCE	-	-	-	-	-	-	-	-	-	-	-	-	-	-	-	-	0.00%
960-00-40474-000-000	OTHER REVENUE/GRANTS	-	-	-	-	-	-	-	-	-	-	-	-	-	-	-	-	0.00%
960-00-40622-001-000	GASOLINE SALES	-	-	-	-	5,722.47	10,119.03	30,098.44	11,470.30	14,591.89	-	-	-	72,002.13	81,000.00	(8,997.87)	88.89%	
960-00-40622-002-000	BOAT LAUNCH FEES	4.14	-	-	-	1,678.00	2,072.00	1,276.70	567.00	926.00	63.83	-	-	6,587.67	7,000.00	(412.33)	94.11%	
960-00-40622-003-000	RENTAL REVENUES	22,313.55	14,096.25	40,367.50	(2,703.08)	-	3,675.00	(79.65)	-	-	-	-	-	77,669.57	76,000.00	1,669.57	102.20%	
960-00-40622-004-000	RESIDENTIAL/COMM RENT PYMTS	10,746.45	-	-	3,689.61	3,689.61	3,689.61	3,689.61	3,689.61	3,689.61	11,068.83	-	-	43,952.94	43,952.00	0.94	100.00%	
960-00-40635-000-000	DONATIONS	-	-	-	-	-	-	-	-	-	-	-	-	-	-	-	0.00%	
960-00-40635-000-100	DONATION/DESIGNATED/LAIMONS	-	-	-	-	-	-	-	-	-	-	-	-	-	-	-	0.00%	
960-00-40636-000-000	INTEREST INCOME	317.43	210.39	196.32	231.33	179.40	185.96	1,043.60	1,048.08	997.87	1,004.46	1,182.70	-	6,597.54	1,800.00	4,797.54	366.53%	
<b>Total Revenues</b>		<b>\$ 33,381.57</b>	<b>\$ 14,306.64</b>	<b>\$ 40,563.82</b>	<b>\$ 1,217.86</b>	<b>\$ 11,269.48</b>	<b>\$ 19,741.60</b>	<b>\$ 36,028.70</b>	<b>\$ 16,774.99</b>	<b>\$ 20,205.37</b>	<b>\$ 12,137.12</b>	<b>\$ 1,182.70</b>	<b>\$ -</b>	<b>\$ 206,809.85</b>	<b>\$ 209,752.00</b>	<b>\$ (2,942.15)</b>	<b>99%</b>	

		EXPENSES																
Account Number		2025	2025	2025	2025	2025	2025	2025	2025	2025	2025	2025	2025	2025	2025	2025	YTD % to	
		JAN	FEB	MAR	APR	MAY	JUNE	JULY	AUG	SEPT	OCT	NOV	DEC	2025 YTD Total	2025 Budget	YTD to Budget	Budget	
960-00-50403-000-000	DEPRECIATION EXPENSE	-	-	-	-	-	-	-	-	-	-	-	-	-	-	-	-	0.00%
960-00-50427-000-000	PRINCIPAL/INTEREST ON DEBT	-	-	40,043.50	-	-	-	-	-	-	-	-	-	40,043.50	40,044.00	(0.50)	100.00%	
960-00-51938-000-000	INSURANCE/PROP/LIABILITY/WC	-	-	4,694.74	-	-	-	-	-	-	-	-	(977.67)	3,717.07	5,200.00	(1,482.93)	71.48%	
960-00-51940-000-000	LAKESIDE PARK LOAN PAYMENT EXP	-	-	-	-	-	-	-	-	-	-	-	-	-	-	-	-	0.00%
960-00-51950-000-000	LAND ACQUISITION EXPENSE	-	-	-	-	-	-	-	-	-	-	-	-	-	-	-	-	0.00%
960-00-51960-000-000	FISCAL AGENT FEE	139.52	-	-	-	-	-	-	-	-	139.52	-	-	279.04	1,200.00	(920.96)	23.25%	
<b>GENERAL GOVERNMENT EXPENSE</b>		<b>\$ 139.52</b>	<b>\$ -</b>	<b>\$ 44,738.24</b>	<b>\$ -</b>	<b>\$ -</b>	<b>\$ -</b>	<b>\$ -</b>	<b>\$ -</b>	<b>\$ -</b>	<b>\$ 139.52</b>	<b>\$ -</b>	<b>\$ (977.67)</b>	<b>\$ 44,039.61</b>	<b>46,444.00</b>	<b>(2,404.39)</b>	<b>95%</b>	
960-00-55200-000-110	LAKESIDE PARK WAGES	-	-	-	1,972.22	-	-	1,266.03	-	-	-	-	-	3,238.25	5,250.00	(2,011.75)	61.68%	
960-00-55200-000-130	LAKESIDE PARK FRINGE BENEFITS	-	-	-	-	-	-	-	-	-	-	-	-	-	-	-	0.00%	
960-00-55200-000-140	LAKESIDE PARK UTILITIES EXP	(79.40)	-	-	(66.48)	207.11	-	(142.93)	525.93	-	148.92	-	-	593.15	1,000.00	(406.85)	59.32%	
960-00-55200-000-150	GASOLINE EXPENSE	-	-	-	-	2,699.12	7,705.78	14,460.09	9,423.77	7,160.84	1,252.09	-	98.90	42,800.59	63,000.00	(20,199.41)	67.94%	
960-00-55200-000-155	OPERATING SUPPLIES	0.69	-	0.69	4.14	2.76	508.91	969.55	838.13	3.70	5.18	523.26	2.22	2,859.23	5,500.00	(2,640.77)	51.99%	
960-00-55200-000-156	GROUPS & MAINTENANCE	-	-	-	-	-	-	6,850.00	180.00	223.98	180.00	4,094.00	3,000.00	14,527.98	15,000.00	(472.02)	96.85%	
960-00-55200-000-160	EQUIPMENT MAINTENANCE	-	-	-	-	-	-	-	-	-	-	-	-	-	5,000.00	(5,000.00)	0.00%	
960-00-55200-000-165	BUILDING MAINTENANCE	-	-	189.00	2,308.70	5,657.45	5,657.36	-	-	-	1,046.45	87.90	-	14,946.86	5,000.00	9,946.86	298.94%	
960-00-55200-000-168	OTHER PROPERTY EXPENSE/TAXES	4,566.27	-	-	-	-	-	-	-	-	-	-	-	4,566.27	6,000.00	(1,433.73)	76.10%	
<b>CULTURE, MAINTENANCE &amp; TAXES</b>		<b>\$ 4,487.56</b>	<b>\$ -</b>	<b>\$ 189.69</b>	<b>\$ 4,218.58</b>	<b>\$ 8,566.44</b>	<b>\$ 13,872.05</b>	<b>\$ 23,402.74</b>	<b>\$ 10,967.83</b>	<b>\$ 7,388.52</b>	<b>\$ 2,632.64</b>	<b>\$ 4,705.16</b>	<b>\$ 3,101.12</b>	<b>\$ 83,532.33</b>	<b>105,750.00</b>	<b>(22,217.67)</b>	<b>78.99%</b>	
960-00-57605-000-000	CAPITAL OUTLAY - OTHER PARKS	-	-	-	-	33,150.50	-	-	-	-	-	-	-	33,150.50	-	33,150.50	0.00%	
960-00-57610-000-000	LAKESIDE PARK CAPITAL OUTLAY	-	-	-	-	-	-	-	-	-	17,500.00	-	-	17,500.00	-	17,500.00	0.00%	
200-00-55200-000-100	PARK IMPROVEMENTS - CAPITAL	-	-	-	54,630.00	10,015.00	54,630.00	(119,260.00)	-	-	-	-	-	15.00	-	15.00	0.00%	
<b>CAPITAL OUTLAY</b>		<b>\$ -</b>	<b>\$ -</b>	<b>\$ -</b>	<b>\$ -</b>	<b>\$ 33,150.50</b>	<b>\$ -</b>	<b>\$ -</b>	<b>\$ -</b>	<b>\$ -</b>	<b>\$ 17,500.00</b>	<b>\$ -</b>	<b>\$ -</b>	<b>\$ 50,650.50</b>	<b>\$ -</b>	<b>\$ 50,650.50</b>	<b>\$ -</b>	
<b>Total Expenses</b>		<b>\$ 4,627.08</b>	<b>\$ -</b>	<b>\$ 44,927.93</b>	<b>\$ 4,218.58</b>	<b>\$ 41,716.94</b>	<b>\$ 13,872.05</b>	<b>\$ 23,402.74</b>	<b>\$ 10,967.83</b>	<b>\$ 7,388.52</b>	<b>\$ 20,272.16</b>	<b>\$ 4,705.16</b>	<b>\$ 2,123.45</b>	<b>\$ 178,222.44</b>	<b>\$ 152,194.00</b>	<b>\$ 26,028.44</b>	<b>117%</b>	

City of Pewaukee - New Agenda Item

Agenda Language:

Discussion and possible action regarding tenant lease for Laimon Family Lakeside Park.

Sub Item Agenda Language:

Background Provided By:

Nick Phalin

Background:

Discussion with tenant was had. They understand and agree to 3% increase. They've requested a series of building improvements including the items and estimated costs below.

- Windows / Screens / Doors - Requesting one new window pane, patio door with 9 windows in it and screens for windows (never had screens during our time owning) ~ \$1,950
- Kitchen/Dining interior walls - remove outdated mallard wallpaper and paint; Interior ceiling cracks in dining - caulk and paint ceiling ~ \$3,500
- Duct cleaning ~\$1,100
- **Total of the three items above = ~\$6,550**

We would like the Parks and Recreation Board to consider if the Laimon fund, tenant, or split portion should provide dollars for these associated repairs.

Fiscal Impact:

Recommended Motion: